

## Product datasheet

# Anti-VRK2 antibody ab58052

画像数 3

### 製品の概要

製品名	Anti-VRK2 antibody
製品の詳細	Mouse monoclonal to VRK2
由来種	Mouse
アプリケーション	<b>適用あり:</b> WB, Flow Cyt, ICC/IF
種交差性	<b>交差種:</b> Human
免疫原	Recombinant fragment, corresponding to amino acids 260-360 of Human VRK2

### 製品の特性

製品の状態	Liquid
保存方法	Shipped at 4°C. Upon delivery aliquot and store at -20°C or -80°C. Avoid repeated freeze / thaw cycles.
バッファー	Preservative: None PBS, pH 7.2
精製度	Protein G purified
ポリ/モノ	モノクローナル
アイソタイプ	IgG1
軽鎖の種類	kappa

### アプリケーション

Our [Abpromise guarantee](#) covers the use of **ab58052** in the following tested applications.

The application notes include recommended starting dilutions; optimal dilutions/concentrations should be determined by the end user.

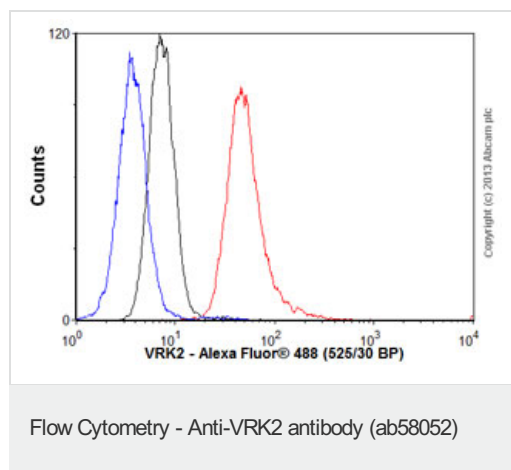
アプリケーション	Abreviews	特記事項
WB		Use a concentration of 1 - 5 µg/ml. Predicted molecular weight: 58 kDa.
Flow Cyt		Use 1 µg for 10 <sup>6</sup> cells. <a href="#">ab170190</a> - Mouse monoclonal IgG1, is suitable for use as an isotype control with this antibody.

アプリケーション	Abreviews	特記事項
ICC/IF		Use a concentration of 10 µg/ml.

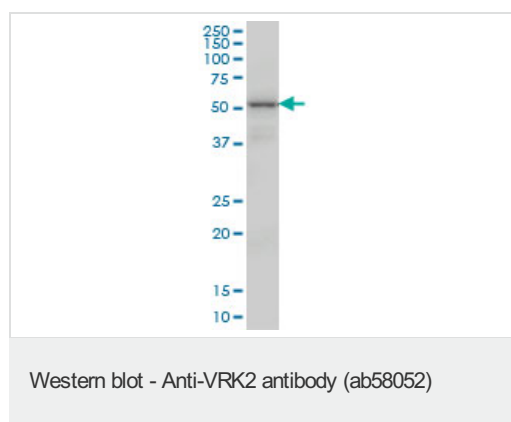
## ターゲット情報

機能	Probable serine/threonine kinase.
組織特異性	Widely expressed. Highly expressed in fetal liver, skeletal muscle, pancreas, heart, peripheral blood leukocytes and testis.
配列類似性	Belongs to the protein kinase superfamily. CK1 Ser/Thr protein kinase family. VRK subfamily. Contains 1 protein kinase domain.
細胞内局在	Membrane.

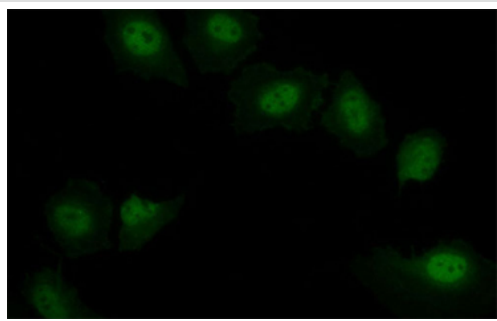
## 画像



Overlay histogram showing K562 cells stained with ab58052 (red line). The cells were fixed with 80% methanol (5 min) and then permeabilized with 0.1% PBS-Tween for 20 min. The cells were then incubated in 1x PBS / 10% normal goat serum / 0.3M glycine to block non-specific protein-protein interactions followed by the antibody (ab58052, 1µg/1x10<sup>6</sup> cells) for 30 min at 22°C. The secondary antibody used was Alexa Fluor® 488 goat anti-mouse IgG (H&L) (ab150113) at 1/2000 dilution for 30 min at 22°C. Isotype control antibody (black line) was mouse IgG1 [ICIGG1] (ab91353, 1µg/1x10<sup>6</sup> cells) used under the same conditions. Unlabelled sample (blue line) was also used as a control. Acquisition of >5,000 events were collected using a 20mW Argon ion laser (488nm) and 525/30 bandpass filter.



VRK2 antibody (ab58052) at 1µg/lane + K-562 cell lysate at 25µg/lane.



ab58052 at 10 ug/ml staining VRK2 in human Hella cells by Immunocytochemistry/ Immunofluorescence.

Immunocytochemistry/ Immunofluorescence - Anti-VRK2 antibody (ab58052)

**Please note:** All products are "FOR RESEARCH USE ONLY AND ARE NOT INTENDED FOR DIAGNOSTIC OR THERAPEUTIC USE"

### Our Abpromise to you: Quality guaranteed and expert technical support

---

- Replacement or refund for products not performing as stated on the datasheet
- Valid for 12 months from date of delivery
- Response to your inquiry within 24 hours
- We provide support in Chinese, English, French, German, Japanese and Spanish
- Extensive multi-media technical resources to help you
- We investigate all quality concerns to ensure our products perform to the highest standards

If the product does not perform as described on this datasheet, we will offer a refund or replacement. For full details of the Abpromise, please visit <https://www.abcam.co.jp/abpromise> or contact our technical team.

### Terms and conditions

---

- Guarantee only valid for products bought direct from Abcam or one of our authorized distributors