

Product datasheet

Anti-Ube2L6 antibody [EPR4267(2)] ab109086

リコンビナント RabMAb®

画像数 3

製品の概要

製品名	Anti-Ube2L6 antibody [EPR4267(2)]
製品の詳細	Rabbit monoclonal [EPR4267(2)] to Ube2L6
由来種	Rabbit
アプリケーション	適用あり: WB, IP, IHC-P, ICC 適用なし: Flow Cyt
種交差性	交差種: Human
免疫原	Synthetic peptide within Human Ube2L6. The exact sequence is proprietary.
ポジティブ・コントロール	Human fetal thymus, Human lymph node, Daudi, and MOLT4 lysates; Human kidney and uterus tissues.
特記事項	Mouse, Rat: We have preliminary internal testing data to indicate this antibody may not react with these species. Please contact us for more information.

Our RabMAb® technology is a patented hybridoma-based technology for making rabbit monoclonal antibodies. For details on our patents, please refer to [RabMAb® patents](#)

This product is a recombinant rabbit monoclonal antibody.

製品の特性

製品の状態	Liquid
保存方法	Shipped at 4°C. Store at -20°C. Stable for 12 months at -20°C.
バッファー	pH: 7.20 Preservative: 0.05% Sodium azide Constituents: 0.1% BSA, 40% Glycerol, 9.85% Tris glycine, 50% Tissue culture supernatant
精製度	Tissue culture supernatant
ポリ/モノ	モノクローナル
クローン名	EPR4267(2)
アイソタイプ	IgG

アプリケーション

Our [Abpromise guarantee](#) covers the use of **ab109086** in the following tested applications.

The application notes include recommended starting dilutions; optimal dilutions/concentrations should be determined by the end user.

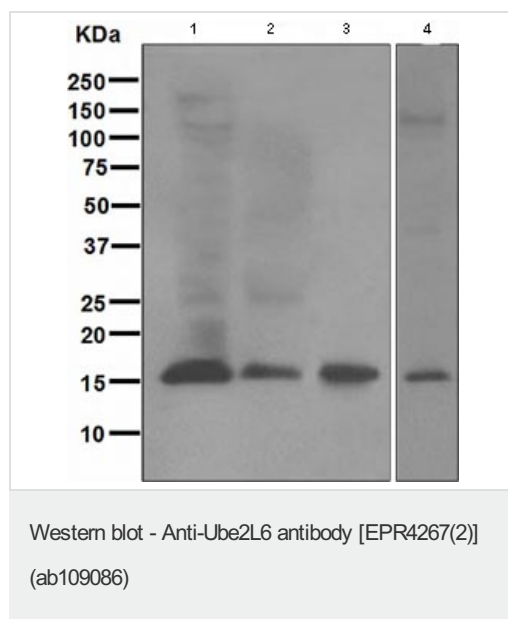
アプリケーション	Abreviews	特記事項
WB		1/1000 - 1/10000. Predicted molecular weight: 18 kDa.
IP		1/10 - 1/100.
IHC-P		1/250 - 1/500. Antigen retrieval is recommended.
ICC		1/250 - 1/500.

追加情報 Is unsuitable for Flow Cyt.

ターゲット情報

機能	Catalyzes the covalent attachment of ubiquitin or ISG15 to other proteins. Functions in the E6/E6-AP-induced ubiquitination of p53/TP53.
組織特異性	Present in natural killer cells (at protein level).
パスウェイ	Protein modification; protein ubiquitination.
配列類似性	Belongs to the ubiquitin-conjugating enzyme family.
翻訳後修飾	ISGylated.

画像



All lanes : Anti-Ube2L6 antibody
[EPR4267(2)] (ab109086) at 1/1000 dilution

Lane 1 : Human fetal thymus lysate

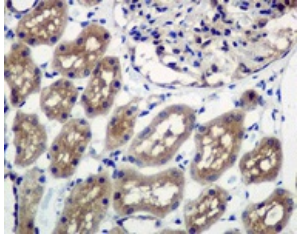
Lane 2 : Human lymph node, lysate

Lane 3 : Daudi lysate

Lane 4 : MOLT4 lysate

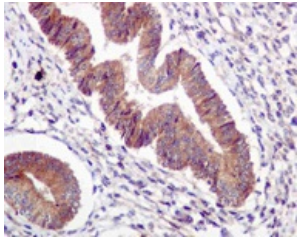
Lysates/proteins at 10 µg per lane.

Predicted band size: 18 kDa



ab109086 at 1/250 dilution staining Ube2L6 in Human kidney by Immunohistochemistry, Paraffin-embedded tissue.

Immunohistochemistry (Formalin/PFA-fixed paraffin-embedded sections) - Anti-Ube2L6 antibody [EPR4267(2)] (ab109086)



ab109086 at 1/250 dilution staining Ube2L6 in Human uterus by Immunohistochemistry, Paraffin-embedded tissue.

Immunohistochemistry (Formalin/PFA-fixed paraffin-embedded sections) - Anti-Ube2L6 antibody [EPR4267(2)] (ab109086)

Please note: All products are "FOR RESEARCH USE ONLY AND ARE NOT INTENDED FOR DIAGNOSTIC OR THERAPEUTIC USE"

Our Abpromise to you: Quality guaranteed and expert technical support

- Replacement or refund for products not performing as stated on the datasheet
- Valid for 12 months from date of delivery
- Response to your inquiry within 24 hours
- We provide support in Chinese, English, French, German, Japanese and Spanish
- Extensive multi-media technical resources to help you
- We investigate all quality concerns to ensure our products perform to the highest standards

If the product does not perform as described on this datasheet, we will offer a refund or replacement. For full details of the Abpromise, please visit <https://www.abcam.co.jp/abpromise> or contact our technical team.

Terms and conditions

- Guarantee only valid for products bought direct from Abcam or one of our authorized distributors