


## Product datasheet

# Anti-Timeless antibody ab50943

★★★★☆ 2 Abreviews 2 References 画像数 2

### 製品の概要

製品名	Anti-Timeless antibody
製品の詳細	Rabbit polyclonal to Timeless
由来種	Rabbit
特異性	This antibody reacts with Timeless
アプリケーション	<b>適用あり:</b> WB, ELISA
種交差性	<b>交差種:</b> Human <b>交差が予測される動物種:</b> Mouse, Rat, Sheep, Cow, Dog, Drosophila melanogaster 
免疫原	Synthetic peptide: MDLHMMNCEL LATCSALGYL EGDTYHKEPD CLESVKDLIR YLRHEDETRD, corresponding to amino acids 1-50 of Human Timeless <a href="#">Run BLAST with ExPASy</a> <a href="#">Run BLAST with NCBI</a>
ポジティブ・コントロール	Transfected 293T cell lysate

### 製品の特性

製品の状態	Liquid
保存方法	Shipped at 4°C. Upon delivery aliquot and store at -20°C. Avoid freeze / thaw cycles.
バッファー	Preservative: 0.09% Sodium azide Constituents: 2% Sucrose, PBS
精製度	Protein A purified
ポリ/モノ	ポリクローナル
アイソタイプ	IgG

### アプリケーション

Our [Abpromise guarantee](#) covers the use of **ab50943** in the following tested applications.

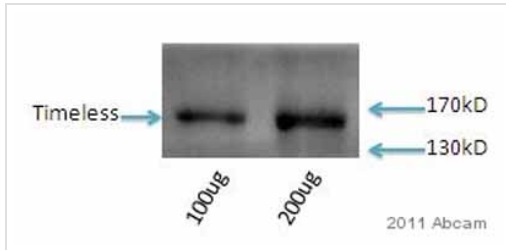
The application notes include recommended starting dilutions; optimal dilutions/concentrations should be determined by the end user.

アプリケーション	Abreviews	特記事項
WB	★★★★☆	Use a concentration of 2.5 µg/ml. Detects a band of approximately 139 kDa (predicted molecular weight: 139 kDa). Can be blocked with <a href="#">Timeless peptide (ab113078)</a> . Good results were obtained when blocked with 5% non-fat dry milk in 0.05% PBS-T.
ELISA		1/312500. Titre using peptide based assay: 1/312500.

## ターゲット情報

機能	Required for normal progression of S-phase. Involved in the circadian rhythm autoregulatory loop. Negatively regulates CLOCK-NPAS2/BMAL1-induced transactivation of PER1 possibly via translocation of PER1 into the nucleus. Promotes TIPIN nuclear localization. Involved in cell survival after DNA damage or replication stress. May be specifically required for the ATR-CHK1 pathway in the replication checkpoint induced by hydroxyurea or ultraviolet light. May also play an important role in epithelial cell morphogenesis and formation of branching tubules.
組織特異性	Expressed in all tissues examined including brain, heart, lung, liver, skeletal muscle, kidney, placenta, pancreas, spleen, thymus and testis. Highest levels of expression in placenta, pancreas, thymus and testis.
配列類似性	Belongs to the timeless family.
細胞内局在	Nucleus.

## 画像



Western blot - Anti-Timeless antibody (ab50943)

Image courtesy of an anonymous Abreview.

**All lanes :** Anti-Timeless antibody (ab50943) at 1/500 dilution

**Lane 1 :** Whole cell extract from HeLa cells at 100 µg

**Lane 2 :** Whole cell extract from HeLa cells at 200 µg

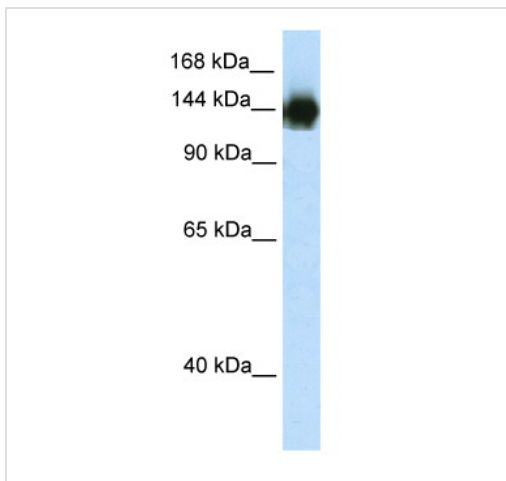
**Secondary**

**All lanes :** HRP conjugated goat anti-rabbit IgG at 1/5000 dilution

Developed using the ECL technique.

**Predicted band size:** 139 kDa

**Exposure time:** 50 seconds



Western blot - Anti-Timeless antibody (ab50943)

Anti-Timeless antibody (ab50943) at 2.5 µg/ml + Transfected 293T cell lysate at 10 µg

**Secondary**

HRP conjugated anti-Rabbit IgG at 1/50000 dilution

**Predicted band size:** 139 kDa

**Observed band size:** 139 kDa

**Please note:** All products are "FOR RESEARCH USE ONLY AND ARE NOT INTENDED FOR DIAGNOSTIC OR THERAPEUTIC USE"

**Our Abpromise to you: Quality guaranteed and expert technical support**

- Replacement or refund for products not performing as stated on the datasheet
- Valid for 12 months from date of delivery
- Response to your inquiry within 24 hours
- We provide support in Chinese, English, French, German, Japanese and Spanish
- Extensive multi-media technical resources to help you
- We investigate all quality concerns to ensure our products perform to the highest standards

If the product does not perform as described on this datasheet, we will offer a refund or replacement. For full details of the Abpromise, please visit <https://www.abcam.co.jp/abpromise> or contact our technical team.

## Terms and conditions

---

- Guarantee only valid for products bought direct from Abcam or one of our authorized distributors