

Product datasheet

Anti-Talin 2 antibody ab14274

画像数 1

製品の概要

製品名	Anti-Talin 2 antibody
製品の詳細	Chicken polyclonal to Talin 2
由来種	Chicken
アプリケーション	適用あり: WB
種交差性	交差種: Mouse, Human
免疫原	Amino acids 1750-1950 of Talin 2.

製品の特性

製品の状態	Liquid
保存方法	Shipped at 4°C. Upon delivery aliquot and store at -20°C. Avoid freeze / thaw cycles.
バッファー	Constituent: PBS
精製度	Immunogen affinity purified
ポリ/モノ	ポリクローナル
アイソタイプ	IgY

アプリケーション

Our [Abpromise guarantee](#) covers the use of **ab14274** in the following tested applications.

The application notes include recommended starting dilutions; optimal dilutions/concentrations should be determined by the end user.

アプリケーション	Abreviews	特記事項
WB		1/2000. Predicted molecular weight: 282 kDa.

ターゲット情報

機能	As a major component of focal adhesion plaques that links integrin to the actin cytoskeleton, may play an important role in cell adhesion. Recruits PIP5K1C to focal adhesion plaques and strongly activates its kinase activity.
----	---

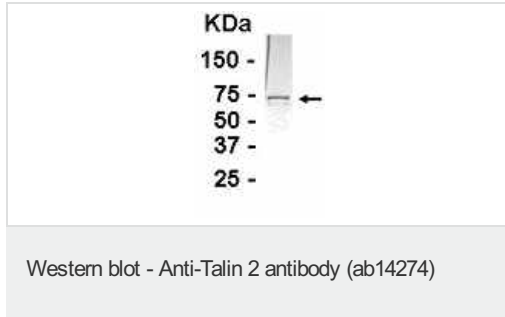
## 配列類似性

Contains 1 FERM domain.  
Contains 1 ILWEQ domain.

## 細胞内局在

Cell junction > focal adhesion. Cell junction > synapse. Cell membrane. Cytoplasm > cytoskeleton.  
Focal adhesion plaques and synapses.

## 画像



Anti-Talin 2 antibody (ab14274) at 1/2000 dilution + Fusion protein derived in E.Coli

**Predicted band size:** 282 kDa

*E coli* derived fusion protein as test antigen. Ab14274 dilution: 1:2000.

Colorimetric method for signal development.

**Please note:** All products are "FOR RESEARCH USE ONLY AND ARE NOT INTENDED FOR DIAGNOSTIC OR THERAPEUTIC USE"

## Our Abpromise to you: Quality guaranteed and expert technical support

- Replacement or refund for products not performing as stated on the datasheet
- Valid for 12 months from date of delivery
- Response to your inquiry within 24 hours
- We provide support in Chinese, English, French, German, Japanese and Spanish
- Extensive multi-media technical resources to help you
- We investigate all quality concerns to ensure our products perform to the highest standards

If the product does not perform as described on this datasheet, we will offer a refund or replacement. For full details of the Abpromise, please visit <https://www.abcam.co.jp/abpromise> or contact our technical team.

## Terms and conditions

- Guarantee only valid for products bought direct from Abcam or one of our authorized distributors