


## Product datasheet

# Anti-TRPC6 antibody [3F2.H10.F2] ab105845

★★★★☆ 1 Abreviews [画像数 2](#)

### 製品の概要

製品名	Anti-TRPC6 antibody [3F2.H10.F2]
製品の詳細	Mouse monoclonal [3F2.H10.F2] to TRPC6
由来種	Mouse
特異性	Cross-reactivity with TRPC6 from other sources has not been determined.
アプリケーション	<b>適用あり:</b> WB, ELISA, IHC-P
種交差性	<b>交差種:</b> Human <b>交差が予測される動物種:</b> Chimpanzee 
免疫原	Synthetic peptide corresponding to a region near the C terminal of Human TRPC6 (NP_004612).
ポジティブ・コントロール	Human adrenal (cortex) tissue

### 製品の特性

製品の状態	Liquid
保存方法	Shipped at 4°C. Store at +4°C short term (1-2 weeks). Upon delivery aliquot. Store at -20°C long term.
バッファー	pH: 7.20 Preservative: 0.01% Sodium azide Constituents: 0.42% Potassium phosphate, 0.88% Sodium chloride
精製度	Protein A purified
特記事項(精製)	Purified from concentrated tissue culture supernate by Protein A chromatography.
ポリ/モノ	モノクローナル
クローン名	3F2.H10.F2
アイソタイプ	IgG1

### アプリケーション

Our [Abpromise guarantee](#) covers the use of **ab105845** in the following tested applications.

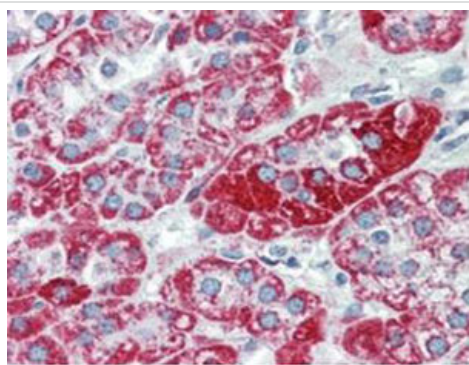
The application notes include recommended starting dilutions; optimal dilutions/concentrations should be determined by the end user.

アプリケーション	Abreviews	特記事項
WB	★★★★☆	1/500 - 1/2000. Predicted molecular weight: 106 kDa.
ELISA		1/100000 - 1/50000.
IHC-P		Use a concentration of 2.5 µg/ml.

## ターゲット情報

機能	Thought to form a receptor-activated non-selective calcium permeant cation channel. Probably is operated by a phosphatidylinositol second messenger system activated by receptor tyrosine kinases or G-protein coupled receptors. Activated by diacylglycerol (DAG) in a membrane-delimited fashion, independently of protein kinase C. Seems not to be activated by intracellular calcium store depletion.
組織特異性	Expressed primarily in placenta, lung, spleen, ovary and small intestine. Expressed in podocytes and is a component of the glomerular slit diaphragm.
関連疾患	Defects in TRPC6 are the cause of focal segmental glomerulosclerosis type 2 (FSGS2) [MIM:603965]. A renal pathology defined by the presence of segmental sclerosis in glomeruli and resulting in proteinuria, reduced glomerular filtration rate and edema. Renal insufficiency often progresses to end-stage renal disease, a highly morbid state requiring either dialysis therapy or kidney transplantation.
配列類似性	Belongs to the transient receptor (TC 1.A.4) family. STpC subfamily. TRPC6 sub-subfamily. Contains 4 ANK repeats.
細胞内局在	Membrane.

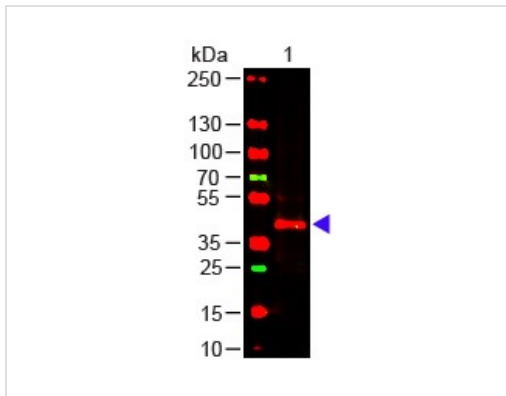
## 画像



Immunohistochemistry (Formalin/PFA-fixed paraffin-embedded sections) - Anti-TRPC6 antibody [3F2.H10.F2] (ab105845)

ab105845 at 2.5 µg/ml staining TRPC6 in Human adrenal (cortex) tissue by Immunohistochemistry Formalin-fixed, Paraffin-embedded tissue.

The image shows strong staining with minimal background staining. The image shows the localization of antibody as the precipitated red signal, with a hematoxylin purple nuclear counterstain.



Western blot analysis of ab105845 with mouse kidney (10ug) at the dilution 1/1000. Secondary antibody (DyLight™ 649 donkey anti-mouse) was used at the dilution 1/20000

Western blot - Anti-TRPC6 antibody [3F2.H10.F2]  
(ab105845)

**Please note:** All products are "FOR RESEARCH USE ONLY AND ARE NOT INTENDED FOR DIAGNOSTIC OR THERAPEUTIC USE"

### Our Abpromise to you: Quality guaranteed and expert technical support

- Replacement or refund for products not performing as stated on the datasheet
- Valid for 12 months from date of delivery
- Response to your inquiry within 24 hours
- We provide support in Chinese, English, French, German, Japanese and Spanish
- Extensive multi-media technical resources to help you
- We investigate all quality concerns to ensure our products perform to the highest standards

If the product does not perform as described on this datasheet, we will offer a refund or replacement. For full details of the Abpromise, please visit <https://www.abcam.co.jp/abpromise> or contact our technical team.

### Terms and conditions

- Guarantee only valid for products bought direct from Abcam or one of our authorized distributors