

## Product datasheet

# Anti-TM2D3 antibody ab122957

画像数 1

### 製品の概要

|              |  |
|--------------|--|
| 製品名          | Anti-TM2D3 antibody  |
| 製品の詳細        | Rabbit polyclonal to TM2D3   |
| 由来種          | Rabbit   |
| アプリケーション     | 適用あり: WB   |
| 種交差性         | 交差種: Mouse<br>交差が予測される動物種: Rat, Rabbit, Horse, Chicken, Guinea pig, Cat, Dog, Human, Drosophila melanogaster, Zebrafish  |
| 免疫原          | Synthetic peptide corresponding to a region within C-terminal amino acids 171-220 ( TALALSITLGGFGADR FYLGQWREGLGKLFSFGGLGIWTLIDVLLIGVGY ) of Mouse TM2D3 (NP_081071; Q8BJ83 isoform 2).<br><a href="#">Run BLAST with</a> <a href="#">Run BLAST with</a> |
| ポジティブ・コントロール | Mouse heart lysate   |

### 製品の特性

|        |  |
|--------|--|
| 製品の状態  | Liquid   |
| 保存方法   | Shipped at 4°C. Upon delivery aliquot and store at -20°C. Avoid repeated freeze / thaw cycles. |
| バッファー  | Preservative: 0.09% Sodium azide<br>Constituents: 2% Sucrose, PBS                              |
| 精製度    | Immunogen affinity purified  |
| ポリ/モノ  | ポリクローナル  |
| アイソタイプ | IgG  |

### アプリケーション

Our [Abpromise guarantee](#) covers the use of **ab122957** in the following tested applications.

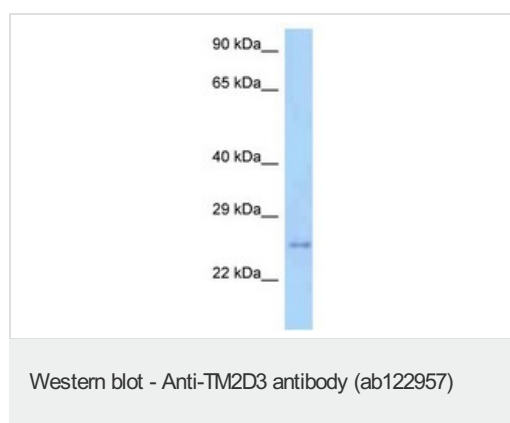
The application notes include recommended starting dilutions; optimal dilutions/concentrations should be determined by the end user.

| アプリケーション | Abreviews | 特記事項   |
|----------|-----------|--|
| WB       |           | Use a concentration of 1 µg/ml. Predicted molecular weight: 27 kDa. Good results were obtained when blocked with 5% non-fat dry milk in 0.05% PBS-T. |

## ターゲット情報

|       |                            |
|-------|----------------------------|
| 組織特異性 | Widely expressed.          |
| 配列類似性 | Belongs to the TM2 family. |
| 細胞内局在 | Membrane.                  |

## 画像



Anti-TM2D3 antibody (ab122957) at 1 µg/ml +  
 Mouse heart lysate at 10 µg

**Predicted band size:** 27 kDa

Gel concentration: 12%

**Please note:** All products are "FOR RESEARCH USE ONLY AND ARE NOT INTENDED FOR DIAGNOSTIC OR THERAPEUTIC USE"

## Our Abpromise to you: Quality guaranteed and expert technical support

- Replacement or refund for products not performing as stated on the datasheet
- Valid for 12 months from date of delivery
- Response to your inquiry within 24 hours
- We provide support in Chinese, English, French, German, Japanese and Spanish
- Extensive multi-media technical resources to help you
- We investigate all quality concerns to ensure our products perform to the highest standards

If the product does not perform as described on this datasheet, we will offer a refund or replacement. For full details of the Abpromise, please visit <https://www.abcam.co.jp/abpromise> or contact our technical team.

## Terms and conditions

- Guarantee only valid for products bought direct from Abcam or one of our authorized distributors