

Product datasheet

Anti-TLE 1 antibody ab125183

1 References [画像数 2](#)

製品の概要

製品名	Anti-TLE 1 antibody
製品の詳細	Rabbit polyclonal to TLE 1
由来種	Rabbit
アプリケーション	適用あり: WB, IP
種交差性	交差種: Human 交差が予測される動物種: Mouse, Rat, Horse, Guinea pig, Cow, Pig, Chimpanzee, Ferret, Rhesus monkey, Gorilla, Orangutan, Elephant
免疫原	Synthetic peptide, corresponding to a region within amino acids 175-225 of Human TLE 1 (NP_005068.2).
ポジティブ・コントロール	Jurkat, 293T and HeLa whole cell lysates

製品の特性

製品の状態	Liquid
保存方法	Shipped at 4°C. Upon delivery aliquot and store at -20°C. Avoid freeze / thaw cycles.
バッファー	Preservative: 0.09% Sodium azide Constituent: 99% Tris citrate/phosphate Note: pH 7 to 8
精製度	Immunogen affinity purified
ポリ/モノ	ポリクローナル
アイソタイプ	IgG

アプリケーション

Our [Abpromise guarantee](#) covers the use of **ab125183** in the following tested applications.

The application notes include recommended starting dilutions; optimal dilutions/concentrations should be determined by the end user.

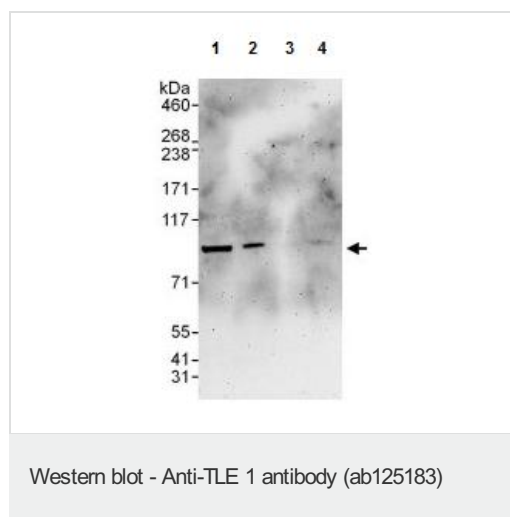
アプリケーション	Abreviews	特記事項
WB		1/2000 - 1/10000. Predicted molecular weight: 83 kDa.

アプリケーション	Abreviews	特記事項
IP		Use at 2-10 µg/mg of lysate.

ターゲット情報

機能	Transcriptional corepressor that binds to a number of transcription factors. Inhibits NF-kappa-B-regulated gene expression. Inhibits the transcriptional activation mediated by FOXA2, and by CTNNB1 and TCF family members in Wnt signaling. The effects of full-length TLE family members may be modulated by association with dominant-negative AES. Unusual function as coactivator for ESRRG.
組織特異性	In all tissues examined, mostly in brain, liver and muscle.
配列類似性	Belongs to the WD repeat Groucho/TLE family. Contains 6 WD repeats.
ドメイン	WD repeat Groucho/TLE family members are characterized by 5 regions, a glutamine-rich Q domain, a glycine/proline-rich GP domain, a central CcN domain, containing a nuclear localization signal, and a serine/proline-rich SP domain. The most highly conserved are the N-terminal Q domain and the C-terminal WD-repeat domain.
翻訳後修飾	Phosphorylated, probably by CDK1. The degree of phosphorylation varies throughout the cell cycle, and is highest at the G2/M transition. Becomes hyperphosphorylated in response to cell differentiation and interaction with HES1 or RUNX1. Ubiquitinated by XIAP/BIRC4.
細胞内局在	Nucleus. Nuclear and chromatin-associated, depending on isoforms and phosphorylation status. Hyperphosphorylation decreases the affinity for nuclear components.

画像



All lanes : Anti-TLE 1 antibody (ab125183) at 0.1 µg/ml

Lane 1 : 293T whole cell lysate at 50 µg

Lane 2 : 293T whole cell lysate at 15 µg

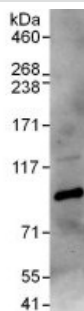
Lane 3 : Jurkat whole cell lysate at 50 µg

Lane 4 : HeLa whole cell lysate at 50 µg

Developed using the ECL technique.

Predicted band size: 83 kDa

Exposure time: 3 minutes



Immunoprecipitation - Anti-TLE 1 antibody
(ab125183)

ab125183, at 6 $\mu\text{g}/\text{mg}$ lysate, detecting TLE 1 in 293T cell lysate by Immunoprecipitation. For the subsequent Western blot, ab125183 was used at 0.4 $\mu\text{g}/\text{ml}$ (1 mg of immunoprecipitate, 20% loaded in the lane). The blot was developed using the ECL technique, with an exposure time of 30 seconds.

Please note: All products are "FOR RESEARCH USE ONLY AND ARE NOT INTENDED FOR DIAGNOSTIC OR THERAPEUTIC USE"

Our Abpromise to you: Quality guaranteed and expert technical support

- Replacement or refund for products not performing as stated on the datasheet
- Valid for 12 months from date of delivery
- Response to your inquiry within 24 hours
- We provide support in Chinese, English, French, German, Japanese and Spanish
- Extensive multi-media technical resources to help you
- We investigate all quality concerns to ensure our products perform to the highest standards

If the product does not perform as described on this datasheet, we will offer a refund or replacement. For full details of the Abpromise, please visit <https://www.abcam.co.jp/abpromise> or contact our technical team.

Terms and conditions

- Guarantee only valid for products bought direct from Abcam or one of our authorized distributors