

## Product datasheet

# Anti-TEAD4 antibody - CHIP Grade ab58310

1 Abreviews 19 References 画像数 1

### 製品の概要

製品名	Anti-TEAD4 antibody - CHIP Grade
製品の詳細	Mouse monoclonal to TEAD4 - CHIP Grade
由来種	Mouse
アプリケーション	<b>適用あり:</b> WB, CHIP, CHIPseq, ICC/IF
種交差性	<b>交差種:</b> Mouse, Rat, Human, Recombinant fragment
免疫原	Recombinant fragment, corresponding to amino acids 151-261 of Human TEAD4

### ポジティブ・コントロール

[ウェスタン・プロット用ポジティブコントロール  
Recombinant Human TEAD4 protein](#) >

### 特記事項

Abcam is committed to meeting high standards of ethical manufacturing and has decided to discontinue this product by June 2019 as it has been generated by the ascites method. We are sorry for any inconvenience this may cause.

### 製品の特性

製品の状態	Liquid
保存方法	Shipped at 4°C. Store at +4°C short term (1-2 weeks). Upon delivery aliquot. Store at -20°C or -80°C. Avoid freeze / thaw cycle.
バッファー	Preservative: None PBS, pH 7.2
精製度	Protein G purified
ポリ/モノ	モノクローナル
アイソタイプ	IgG2a
軽鎖の種類	kappa

### アプリケーション

Our [Abpromise guarantee](#) covers the use of **ab58310** in the following tested applications.

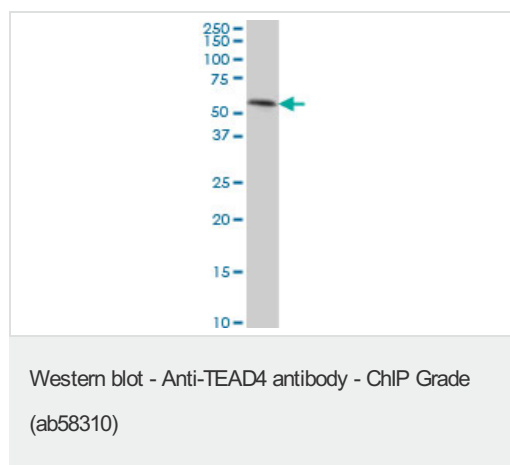
The application notes include recommended starting dilutions; optimal dilutions/concentrations should be determined by the end user.

アプリケーション	Abreviews	特記事項
WB		Use a concentration of 1 - 5 µg/ml. Predicted molecular weight: 48 kDa.
ChIP		Use at an assay dependent concentration. PubMed: 22529382
CHIPseq		Use at an assay dependent concentration. PubMed: 22529382
ICC/IF		Use at an assay dependent concentration. PubMed: 22529382

## ターゲット情報

<b>機能</b>	Transcription factor which plays a key role in the Hippo signaling pathway, a pathway involved in organ size control and tumor suppression by restricting proliferation and promoting apoptosis. The core of this pathway is composed of a kinase cascade wherein MST1/MST2, in complex with its regulatory protein SAV1, phosphorylates and activates LATS1/2 in complex with its regulatory protein MOB1, which in turn phosphorylates and inactivates YAP1 oncoprotein and WWTR1/TAZ. Acts by mediating gene expression of YAP1 and WWTR1/TAZ, thereby regulating cell proliferation, migration and epithelial mesenchymal transition (EMT) induction. Binds specifically and non-cooperatively to the Sph and GT-IIC 'enhancers' (5'-GTGGAATGT-3') and activates transcription. Binds to the M-CAT motif.
<b>組織特異性</b>	Preferentially expressed in skeletal muscle. Lower levels in pancreas, placenta, and heart.
<b>配列類似性</b>	Contains 1 TEA DNA-binding domain.
<b>細胞内局在</b>	Nucleus.

## 画像



TEAD4 antibody (ab58310) at 1ug/lane + HeLa cell lysate at 25ug/lane.

**Please note:** All products are "FOR RESEARCH USE ONLY AND ARE NOT INTENDED FOR DIAGNOSTIC OR THERAPEUTIC USE"

## Our Abpromise to you: Quality guaranteed and expert technical support

- Replacement or refund for products not performing as stated on the datasheet
- Valid for 12 months from date of delivery

- Response to your inquiry within 24 hours
- We provide support in Chinese, English, French, German, Japanese and Spanish
- Extensive multi-media technical resources to help you
- We investigate all quality concerns to ensure our products perform to the highest standards

If the product does not perform as described on this datasheet, we will offer a refund or replacement. For full details of the Abpromise, please visit <https://www.abcam.co.jp/abpromise> or contact our technical team.

### **Terms and conditions**

---

- Guarantee only valid for products bought direct from Abcam or one of our authorized distributors