


Product datasheet

Anti-TCPTP antibody ab1996

画像数 1

製品の概要

製品名	Anti-TCPTP antibody
製品の詳細	Rabbit polyclonal to TCPTP
由来種	Rabbit
アプリケーション	適用あり: WB
種交差性	交差種: Recombinant fragment 交差が予測される動物種: Human 
免疫原	Two separate synthetic peptides conjugated to KLH derived from within residues 300 - 400 of Human TCPTP. Immunogen の所有権に関して (Peptides available as ab14809 and ab14810 .)
ポジティブ・コントロール	This antibody recognises the recombinant TCPTP fusion protein (60kDa)in Western blots.

製品の特性

製品の状態	Liquid
保存方法	Shipped at 4°C. Store at +4°C short term (1-2 weeks). Upon delivery aliquot. Store at -20°C or -80°C. Avoid freeze / thaw cycle.
バッファー	Preservative: 0.02% Sodium Azide Constituents: 1% BSA, PBS. pH 7.4
精製度	Immunogen affinity purified
ポリ/モノ	ポリクローナル
アイソタイプ	IgG

アプリケーション

Our [Abpromise guarantee](#) covers the use of **ab1996** in the following tested applications.

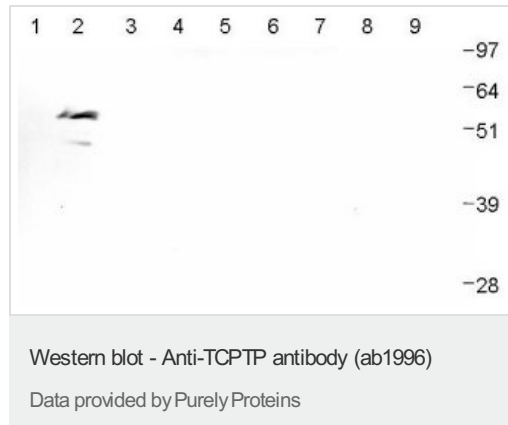
The application notes include recommended starting dilutions; optimal dilutions/concentrations should be determined by the end user.

アプリケーション	Abreviews	特記事項
WB		1/1000. Predicted molecular weight: 48 kDa.

ターゲット情報

組織特異性	Isoform PTPA is probably the major isoform. Isoform PTPB is expressed in T-cells and in placenta.
配列類似性	Belongs to the protein-tyrosine phosphatase family. Non-receptor class 1 subfamily. Contains 1 tyrosine-protein phosphatase domain.
細胞内局在	Cytoplasm; Nucleus and Endoplasmic reticulum.

画像



All lanes : Anti-TCPTP antibody (ab1996) at 1/2000 dilution

Lane 1 : PTP1B (PTPN1)

Lane 2 : TCPTP (PTPN2)

Lane 3 : PTPH1 (PTPN3)

Lane 4 : MEG1 (PTPN4)

Lane 5 : STEP (PTPN5)

Lane 6 : SHP1 (PTPN6)

Lane 7 : HePTP (PTPN7)

Lane 8 : SHP2 (PTPN11)

Lane 9 : BDP1 (PTPN18)

Predicted band size: 48 kDa

Recombinant PTP phosphatase domains were probed with ab1996 at 1/2000. The antibody recognises the recombinant TCPTP fusion protein at ~60 kDa.

Lane 1: PTP1B (PTPN1)

Lane 2: TCPTP (PTPN2)

Lane 3: PTPH1 (PTPN3)

Lane 4: MEG1 (PTPN4)

Lane 5: STEP (PTPN5)

Lane 6: SHP1 (PTPN6)

Lane 7: HePTP (PTPN7)

Lane 8: SHP2 (PTPN11)

Lane 9: BDP1 (PTPN18)

Recombinant PTP phosphatase domains were probed with ab1996 at 1/2000. The antibody recognises the recombinant TCPTP fusion protein at ~60 kDa.

Please note: All products are "FOR RESEARCH USE ONLY AND ARE NOT INTENDED FOR DIAGNOSTIC OR THERAPEUTIC USE"

Our Abpromise to you: Quality guaranteed and expert technical support

- Replacement or refund for products not performing as stated on the datasheet
- Valid for 12 months from date of delivery
- Response to your inquiry within 24 hours

- We provide support in Chinese, English, French, German, Japanese and Spanish
- Extensive multi-media technical resources to help you
- We investigate all quality concerns to ensure our products perform to the highest standards

If the product does not perform as described on this datasheet, we will offer a refund or replacement. For full details of the Abpromise, please visit <https://www.abcam.co.jp/abpromise> or contact our technical team.

Terms and conditions

- Guarantee only valid for products bought direct from Abcam or one of our authorized distributors