


Product datasheet

Anti-TCFL5 antibody ab53546

画像数 1

製品の概要

製品名	Anti-TCFL5 antibody
製品の詳細	Goat polyclonal to TCFL5
由来種	Goat
アプリケーション	適用あり: WB, ELISA
種交差性	交差種: Human 交差が予測される動物種: Mouse 
免疫原	Synthetic peptide: C-KYIQRHGD SL KKE , corresponding to internal sequence amino acids 400-413 of Human TCFL5 Run BLAST with Run BLAST with
ポジティブ・コントロール	Human Testis lysate

製品の特性

製品の状態	Liquid
保存方法	Shipped at 4°C. Upon delivery aliquot and store at -20°C. Avoid freeze / thaw cycles.
バッファー	Preservative: 0.02% Sodium Azide Constituents: 0.5% BSA, 5mg/ml Tris, pH 7.3
精製度	Immunogen affinity purified
ポリモノ	ポリクローナル
アイソタイプ	IgG

アプリケーション

Our [Abpromise guarantee](#) covers the use of **ab53546** in the following tested applications.

The application notes include recommended starting dilutions; optimal dilutions/concentrations should be determined by the end user.

アプリケーション	Abreviews	特記事項
WB		

アプリケーション	Abreviews	特記事項
----------	-----------	------

ELISA

追加情報

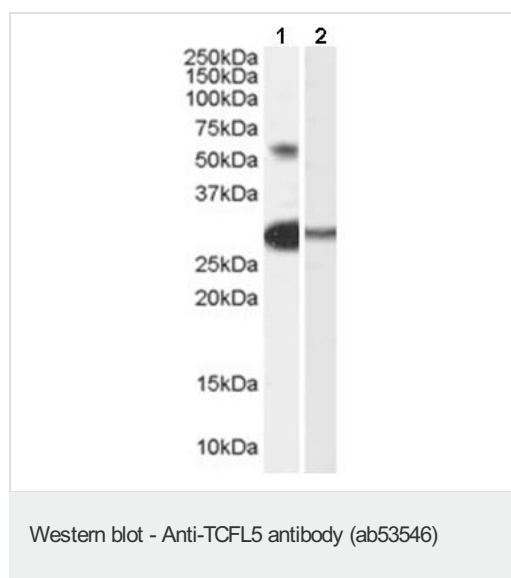
ELISA: Peptide ELISA: Antibody detection limit dilution 1/64000.
 WB: Use at a concentration of 0.3 - 1 µg/ml. Detects a band of approximately 55 kDa (predicted molecular weight: 48 kDa). An additional band of unknown identity was also consistently observed at 28kDa. This band was greatly reduced by incubation with the immunising peptide.

Not yet tested in other applications.
 Optimal dilutions/concentrations should be determined by the end user.

ターゲット情報

機能	Putative transcription factor. Isoform 3 may play a role in early spermatogenesis.
組織特異性	Isoform 3 is testis specific. Isoform 2 is pancreas specific.
配列類似性	Contains 1 bHLH (basic helix-loop-helix) domain.
発生段階	Isoform 3 is specifically expressed in primary spermatocytes at the pachytene stage, but not those at leptoneuma stage. Not expressed in other testicular cells, including spermatogonia located in the basal compartment of the seminiferous tubule or spermatids.
細胞内局在	Nucleus.

画像



All lanes : ab53546 antibody (0.3µg/ml) staining of TCFL5 in Human Testis lysate (35µg protein in RIPA buffer).

Lane 1 : Without the immunising peptide

Lane 2 : With the immunising peptide

Predicted band size: 48 kDa

Observed band size: 55 kDa

[why is the actual band size different from the predicted?](#)

Additional bands at: 28 kDa. We are unsure as to the identity of these extra bands.

Primary incubation was 1 hour. Detected by chemiluminescence.

Please note: All products are "FOR RESEARCH USE ONLY AND ARE NOT INTENDED FOR DIAGNOSTIC OR THERAPEUTIC USE"

Our Abpromise to you: Quality guaranteed and expert technical support

- Replacement or refund for products not performing as stated on the datasheet
- Valid for 12 months from date of delivery
- Response to your inquiry within 24 hours

- We provide support in Chinese, English, French, German, Japanese and Spanish
- Extensive multi-media technical resources to help you
- We investigate all quality concerns to ensure our products perform to the highest standards

If the product does not perform as described on this datasheet, we will offer a refund or replacement. For full details of the Abpromise, please visit <https://www.abcam.co.jp/abpromise> or contact our technical team.

Terms and conditions

- Guarantee only valid for products bought direct from Abcam or one of our authorized distributors