


Product datasheet

Anti-Symplekin antibody ab80274

1 References [画像数 2](#)

製品の概要

製品名	Anti-Symplekin antibody
製品の詳細	Rabbit polyclonal to Symplekin
由来種	Rabbit
アプリケーション	適用あり: WB, IP
種交差性	交差種: Human 交差が予測される動物種: Mouse, Rat, Rabbit, Horse, Guinea pig, Cow, Dog, Pig, Chimpanzee, Ferret, Rhesus monkey, Gorilla, Orangutan, Elephant 
免疫原	Synthetic peptide corresponding to a region between residue 350 and 400 of Human Symplekin (NP_004810.2).
ポジティブ・コントロール	Whole cell lysate from HeLa cells.

製品の特性

製品の状態	Liquid
保存方法	Shipped at 4°C. Upon delivery aliquot and store at -20°C. Avoid freeze / thaw cycles.
バッファー	Preservative: 0.09% Sodium azide Constituents: 1.815% Tris, 1.764% Sodium citrate, 0.021% PBS
精製度	Immunogen affinity purified
ポリ/モノ	ポリクローナル
アイソタイプ	IgG

アプリケーション

Our [Abpromise guarantee](#) covers the use of **ab80274** in the following tested applications.

The application notes include recommended starting dilutions; optimal dilutions/concentrations should be determined by the end user.

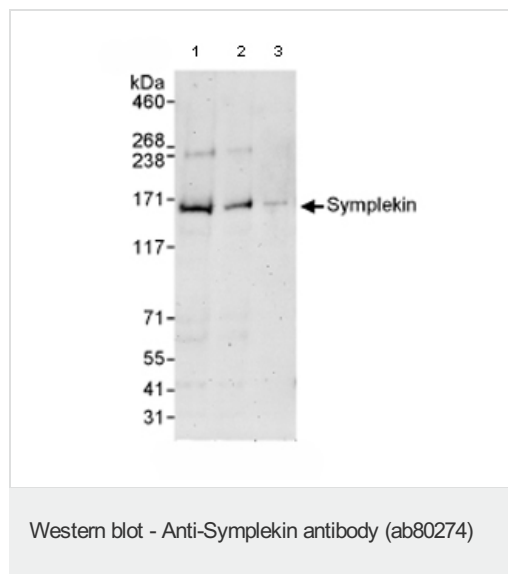
アプリケーション	Abreviews	特記事項
WB		1/2000 - 1/10000. Detects a band of approximately 165 kDa (predicted molecular weight: 141 kDa).
IP		Use at 2-5 µg/mg of lysate.

ターゲット情報

関連性 Symplekin (SYMPK) can associate with tight junctions, functions in the regulation of polyadenylation and promotes gene expression. It is thought to serve as a scaffold for recruiting regulatory factors to the polyadenylation complex. It also participates in 3'-end maturation of histone mRNAs, which do not undergo polyadenylation.

細胞内局在 Cytoplasm, cytoskeleton. Cell junction, tight junction; Cell membrane; Peripheral membrane protein; Cytoplasmic side. Cell junction; Cytoplasmic side. Nucleus, nucleoplasm. Note Cytoplasmic face of adhesion plaques (major) and nucleoplasm (minor) (in cells with TJ). Nucleoplasm (in cells without TJ). Nuclear bodies of heat-stressed cells.

画像



All lanes : Anti-Symplekin antibody (ab80274) at 0.4 µg/ml

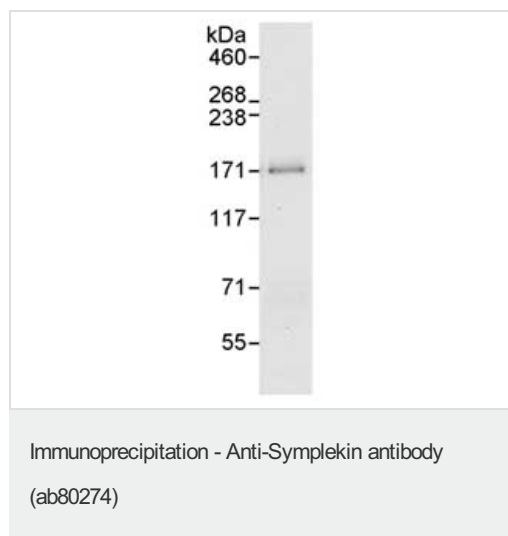
Lane 1 : Whole cell lysate from HeLa cells at 50 µg

Lane 2 : Whole cell lysate from HeLa cells at 15 µg

Lane 3 : Whole cell lysate from HeLa cells at 5 µg

Predicted band size: 141 kDa

Observed band size: 165 kDa



Detection of Symplekin in Immunoprecipitates of Whole cell lysate from HeLa cells (1 mg for IP, 20% of IP loaded), using ab80274 at 3 µg/mg lysate for IP and at 1 µg/ml for subsequent Western blot detection.

Please note: All products are "FOR RESEARCH USE ONLY AND ARE NOT INTENDED FOR DIAGNOSTIC OR THERAPEUTIC USE"

Our Abpromise to you: Quality guaranteed and expert technical support

- Replacement or refund for products not performing as stated on the datasheet
- Valid for 12 months from date of delivery
- Response to your inquiry within 24 hours

- We provide support in Chinese, English, French, German, Japanese and Spanish
- Extensive multi-media technical resources to help you
- We investigate all quality concerns to ensure our products perform to the highest standards

If the product does not perform as described on this datasheet, we will offer a refund or replacement. For full details of the Abpromise, please visit <https://www.abcam.co.jp/abpromise> or contact our technical team.

Terms and conditions

- Guarantee only valid for products bought direct from Abcam or one of our authorized distributors