


Product datasheet

Anti-Spt6 antibody ab32820

★★★★★ 1 Abreviews 9 References 画像数 3

製品の概要

製品名	Anti-Spt6 antibody
製品の詳細	Rabbit polyclonal to Spt6
由来種	Rabbit
アプリケーション	適用あり: IHC-P, IP, WB
種交差性	交差種: Human 交差が予測される動物種: Mouse, Zebrafish 
免疫原	Synthetic peptide conjugated to KLH derived from within residues 1150 - 1250 of Human Spt6. Immunogen の所有権に関して (Peptide available as <a href="#">ab32819</a> .)
ポジティブ・コントロール	This antibody gave a positive signal for the following cell lysates: HeLa Nuclear; HeLa; Jurkat.

製品の特性

製品の状態	Liquid
保存方法	Shipped at 4°C. Store at +4°C short term (1-2 weeks). Upon delivery aliquot. Store at -20°C or -80°C. Avoid freeze / thaw cycle.
バッファー	Preservative: 0.02% Sodium Azide Constituents: 1% BSA, PBS. pH 7.4
精製度	Immunogen affinity purified
ポリ/モノ	ポリクローナル
アイソタイプ	IgG

アプリケーション

Our [Abpromise guarantee](#) covers the use of **ab32820** in the following tested applications.

The application notes include recommended starting dilutions; optimal dilutions/concentrations should be determined by the end user.

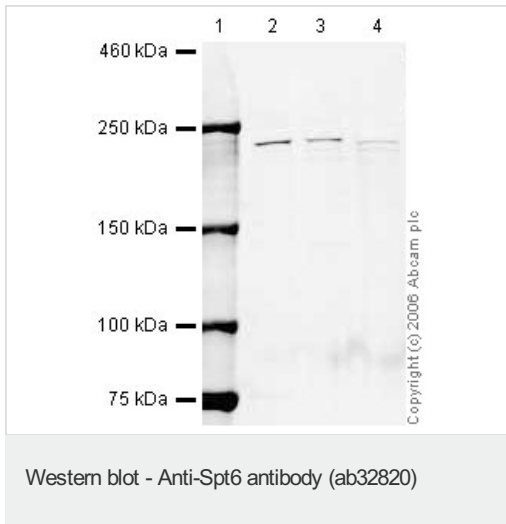
アプリケーション	Abreviews	特記事項
IHC-P		1/30. Perform heat mediated antigen retrieval before commencing with IHC staining protocol.
IP		Use at an assay dependent concentration.

アプリケーション	Abreviews	特記事項
WB	★★★★★	1/500. Detects a band of approximately 230 kDa (predicted molecular weight: 199 kDa).

## ターゲット情報

機能	Acts to stimulate transcriptional elongation by RNA polymerase II.
組織特異性	Ubiquitously expressed.
配列類似性	Belongs to the SPT6 family. Contains 1 S1 motif domain. Contains 1 SH2 domain.
細胞内局在	Nucleus.

## 画像



**Lane 1** : Marker

**Lanes 2-4** : Anti-Spt6 antibody (ab32820) at 1/500 dilution

**Lane 5** : High Mark marker

**Lane 2** : HeLa (Human epithelial carcinoma cell line) Whole Cell Lysate at 10  $\mu$ g

**Lane 3** : Jurkat whole cell lysate (ab7899) at 20  $\mu$ g

**Lane 4** : HeLa (Human epithelial carcinoma cell line) Nuclear Lysate at 20  $\mu$ g

### Secondary

**Lanes 2-4** : IR Dye 680 Conjugated Goat anti Rabbit IgG (H+L) at 1/21250 dilution

Performed under reducing conditions.

**Predicted band size:** 199 kDa

**Observed band size:** 230 kDa

Ab32820 detects a band at approximately 230kDa. Other antibodies to this target detect a band in this region and it is understood that this band corresponds to the native Spt6 protein.

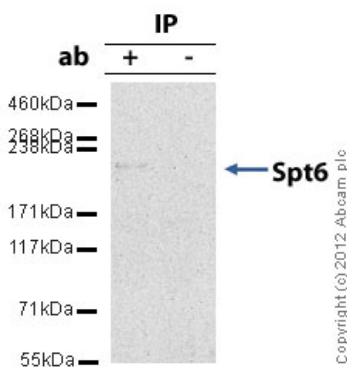


Immunohistochemistry (Formalin/PFA-fixed paraffin-embedded sections) - Anti-Spt6 antibody (ab32820)

Image courtesy of [Human Protein Atlas](#)

ab32820 staining Spt6 in human gall bladder, showing a distinct and strong staining pattern in glandular cells. Paraffin embedded human skin tissue was incubated with ab32820 (1/30 dilution) for 30 mins at room temperature. Antigen retrieval was performed by heat induction in citrate buffer pH 6.

ab32820 was tested in a tissue microarray (TMA) containing a wide range of normal and cancer tissues as well as a cell microarray consisting of a range of commonly used, well characterised human cell lines. Further results for this antibody can be found at [www.proteinatlas.org](http://www.proteinatlas.org)



Immunoprecipitation - Anti-Spt6 antibody (ab32820)

Spt6 was immunoprecipitated using 0.5mg HeLa whole cell extract, 5µg of Rabbit polyclonal to Spt6 and 50µl of protein G magnetic beads (+). No antibody was added to the control (-).

The antibody was incubated under agitation with Protein G beads for 10min, HeLa whole cell extract lysate diluted in RIPA buffer was added to each sample and incubated for a further 10min under agitation.

Proteins were eluted by addition of 40µl SDS loading buffer and incubated for 10min at 70°C; 10µl of each sample was separated on a SDS PAGE gel, transferred to a nitrocellulose membrane, blocked with 5% BSA and probed with ab32820.

Secondary: Mouse monoclonal [SB62a] Secondary Antibody to Rabbit IgG light chain (HRP) ([ab99697](#)).

Band: 230kDa: Spt6

**Please note:** All products are "FOR RESEARCH USE ONLY AND ARE NOT INTENDED FOR DIAGNOSTIC OR THERAPEUTIC USE"

## **Our Abpromise to you: Quality guaranteed and expert technical support**

---

- Replacement or refund for products not performing as stated on the datasheet
- Valid for 12 months from date of delivery
- Response to your inquiry within 24 hours
  
- We provide support in Chinese, English, French, German, Japanese and Spanish
- Extensive multi-media technical resources to help you
- We investigate all quality concerns to ensure our products perform to the highest standards

If the product does not perform as described on this datasheet, we will offer a refund or replacement. For full details of the Abpromise, please visit <https://www.abcam.co.jp/abpromise> or contact our technical team.

## **Terms and conditions**

---

- Guarantee only valid for products bought direct from Abcam or one of our authorized distributors