

## Product datasheet

# Anti-SYPL1 antibody ab113638

### 画像数 2

#### 製品の概要

製品名	Anti-SYPL1 antibody
製品の詳細	Rabbit polyclonal to SYPL1
由来種	Rabbit
アプリケーション	適用あり: WB, ELISA, IHC-P
種交差性	交差種: Human 交差が予測される動物種: Mouse, Rat
免疫原	Synthetic peptide from the N terminal region of Human SYPL1, conjugated to KLH.
ポジティブ・コントロール	Human liver tissue; Human brain lysate

#### 製品の特性

製品の状態	Liquid
保存方法	Shipped at 4°C. Store at +4°C short term (1-2 weeks). Store at -20°C or -80°C. Avoid freeze / thaw cycle.
バッファー	Preservative: 0.02% Sodium azide Constituent: 99% PBS
精製度	Immunogen affinity purified
ポリ/モノ	ポリクローナル
アイソタイプ	IgG

#### アプリケーション

Our [Abpromise guarantee](#) covers the use of **ab113638** in the following tested applications.

The application notes include recommended starting dilutions; optimal dilutions/concentrations should be determined by the end user.

アプリケーション	Abreviews	特記事項
WB		Use a concentration of 1 - 2 µg/ml. Predicted molecular weight: 29 kDa.
ELISA		Use at an assay dependent concentration.

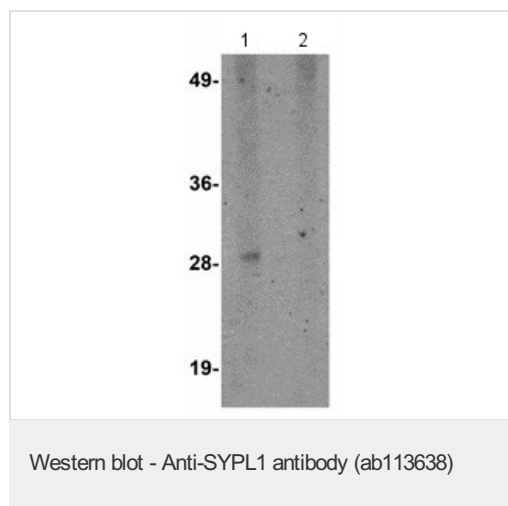
アプリケーション	Abreviews	特記事項
----------	-----------	------

IHC-P		Use a concentration of 5 µg/ml.
-------	--	---------------------------------

## ターゲット情報

配列類似性	Belongs to the synaptophysin/synaptobrevin family. Contains 1 MARVEL domain.
細胞内局在	Cytoplasmic vesicle membrane. Melanosome. Cytoplasmic transport vesicles (By similarity). Identified by mass spectrometry in melanosome fractions from stage I to stage IV.

## 画像

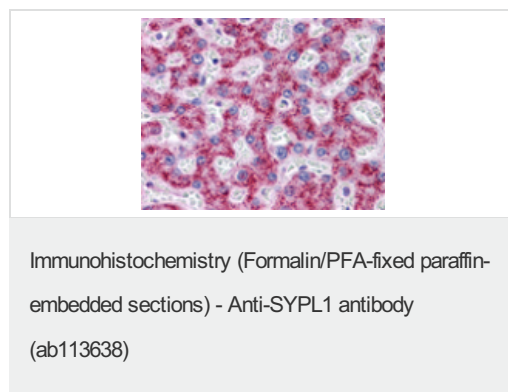


**All lanes :** Anti-SYPL1 antibody (ab113638)  
at 1 µg/ml

**Lane 1 :** Human brain lysate

**Lane 2 :** Human brain lysate with with  
blocking peptide

**Predicted band size:** 29 kDa



ab113638, at 5 µg/ml, staining SYPL1 in formalin fixed, paraffin embedded Human liver tissue by Immunohistochemistry.

**Please note:** All products are "FOR RESEARCH USE ONLY AND ARE NOT INTENDED FOR DIAGNOSTIC OR THERAPEUTIC USE"

## Our Abpromise to you: Quality guaranteed and expert technical support

- Replacement or refund for products not performing as stated on the datasheet
- Valid for 12 months from date of delivery
- Response to your inquiry within 24 hours

- We provide support in Chinese, English, French, German, Japanese and Spanish
- Extensive multi-media technical resources to help you
- We investigate all quality concerns to ensure our products perform to the highest standards

If the product does not perform as described on this datasheet, we will offer a refund or replacement. For full details of the Abpromise, please visit <https://www.abcam.co.jp/abpromise> or contact our technical team.

### **Terms and conditions**

---

- Guarantee only valid for products bought direct from Abcam or one of our authorized distributors