

## Product datasheet

# Anti-SUPT5H antibody ab26259

1 References [画像数 3](#)

### 製品の概要

<b>製品名</b>	Anti-SUPT5H antibody
<b>製品の詳細</b>	Rabbit polyclonal to SUPT5H
<b>由来種</b>	Rabbit
<b>特異性</b>	ab26259 recognises SUPT5H protein.
<b>アプリケーション</b>	<b>適用あり:</b> ELISA, WB, IHC-P
<b>種交差性</b>	<b>交差種:</b> Human <b>交差が予測される動物種:</b> Mouse, Rat, Chicken, Cow, Dog, Zebrafish
<b>免疫原</b>	Synthetic peptide within Human SUPT5H aa 892-941 (C terminal). The exact sequence is proprietary. Sequence: PYAAPSPQGSYQPSPSPQSYHQVAPSPAGYQNTHSPASYHPTSPMAYQA  Database link: <a href="#">O00267</a>  <div style="display: flex; justify-content: space-around;"> <span> <a href="#">Run BLAST with</a></span> <span> <a href="#">Run BLAST with</a></span> </div>
<b>ポジティブ・コントロール</b>	HepG2 cell lysate, human kidney tissue, human pancreas tissue

### 製品の特性

<b>製品の状態</b>	Liquid
<b>保存方法</b>	Shipped at 4°C. Upon delivery aliquot and store at -20°C or -80°C. Avoid repeated freeze / thaw cycles.
<b>バッファー</b>	Preservative: 0.09% Sodium azide Constituents: 2% Sucrose, PBS
<b>精製度</b>	Immunogen affinity purified
<b>ポリ/モノ</b>	ポリクローナル
<b>アイソタイプ</b>	IgG

### アプリケーション

Our [Abpromise guarantee](#) covers the use of **ab26259** in the following tested applications.

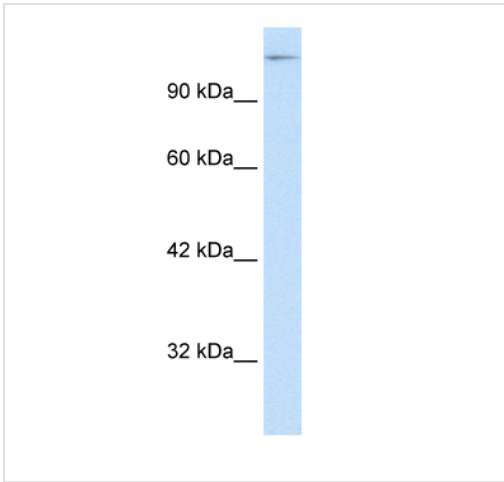
The application notes include recommended starting dilutions; optimal dilutions/concentrations should be determined by the end user.

アプリケーション	Abreviews	特記事項
ELISA		1/62500.
WB		Use a concentration of 1 µg/ml. Predicted molecular weight: 121 kDa. Good results were obtained when blocked with 5% non-fat dry milk in 0.05% PBS-T.
IHC-P		Use at an assay dependent concentration.

## ターゲット情報

機能	Component of the DRB sensitivity-inducing factor complex (DSIF complex), which regulates mRNA processing and transcription elongation by RNA polymerase II. DSIF positively regulates mRNA capping by stimulating the mRNA guanylyltransferase activity of RNGTT/CAP1A. DSIF also acts cooperatively with the negative elongation factor complex (NELF complex) to enhance transcriptional pausing at sites proximal to the promoter. Transcriptional pausing may facilitate the assembly of an elongation competent RNA polymerase II complex. DSIF and NELF promote pausing by inhibition of the transcription elongation factor TFIIIS/S-II. TFIIIS/S-II binds to RNA polymerase II at transcription pause sites and stimulates the weak intrinsic nuclease activity of the enzyme. Cleavage of blocked transcripts by RNA polymerase II promotes the resumption of transcription from the new 3' terminus and may allow repeated attempts at transcription through natural pause sites. DSIF can also positively regulate transcriptional elongation and is required for the efficient activation of transcriptional elongation by the HIV-1 nuclear transcriptional activator, Tat. DSIF acts to suppress transcriptional pausing in transcripts derived from the HIV-1 LTR and blocks premature release of HIV-1 transcripts at terminator sequences.
組織特異性	Ubiquitously expressed.
配列類似性	Belongs to the SPT5 family. Contains 5 KOW domains.
翻訳後修飾	Methylated by PRMT1/HRMT1L2 and PRMT5/SKB1. Methylation negatively regulates interaction with P-TEFb and RNA polymerase II. Phosphorylated. Phosphorylation by P-TEFb alleviates transcriptional pausing and can stimulate transcriptional elongation from the HIV-1 LTR. P-TEFb dependent phosphorylation is stimulated by the HIV-1 Tat protein. Phosphorylation may also stimulate interaction with PIN1. Bulk phosphorylation occurs predominantly in mitosis.
細胞内局在	Nucleus.

## 画像



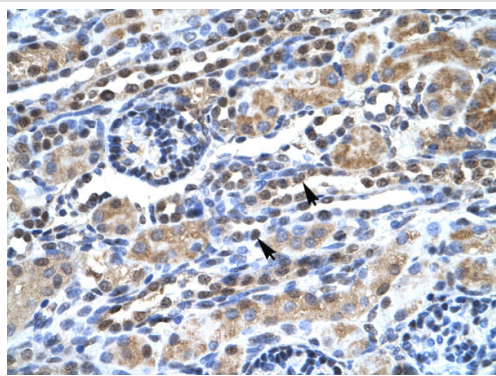
Western blot - Anti-SUPT5H antibody (ab26259)

Anti-SUPT5H antibody (ab26259) at 0.5  $\mu\text{g/ml}$   
+ HepG2 cell lysate

**Secondary**

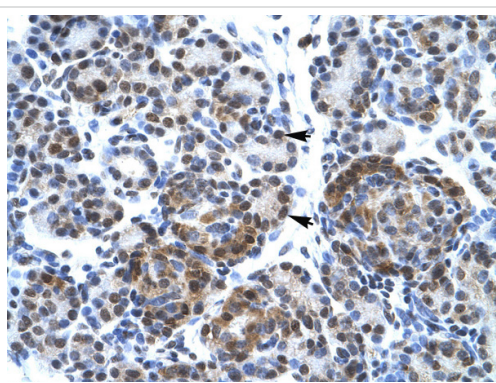
HRP conjugated anti-Rabbit IgG diluted  
1/50000 - 1/100000

**Predicted band size:** 121 kDa



Staining of human kidney tissue with ab26259 (4-8  $\mu\text{g/ml}$ ). Positive labelled epithelial cells of renal tubule are indicated with arrows. 400X magnification.

Immunohistochemistry (Formalin/PFA-fixed paraffin-embedded sections) - Anti-SUPT5H antibody (ab26259)



Staining of human pancreas tissue with ab26259 (4-8  $\mu\text{g/ml}$ ). Positive labelled epithelial cells of pancreatic acinus are indicated with arrows. 400X magnification.

Immunohistochemistry (Formalin/PFA-fixed paraffin-embedded sections) - Anti-SUPT5H antibody (ab26259)

**Please note:** All products are "FOR RESEARCH USE ONLY AND ARE NOT INTENDED FOR DIAGNOSTIC OR THERAPEUTIC USE"

## **Our Abpromise to you: Quality guaranteed and expert technical support**

---

- Replacement or refund for products not performing as stated on the datasheet
- Valid for 12 months from date of delivery
- Response to your inquiry within 24 hours
  
- We provide support in Chinese, English, French, German, Japanese and Spanish
- Extensive multi-media technical resources to help you
- We investigate all quality concerns to ensure our products perform to the highest standards

If the product does not perform as described on this datasheet, we will offer a refund or replacement. For full details of the Abpromise, please visit <https://www.abcam.co.jp/abpromise> or contact our technical team.

## **Terms and conditions**

---

- Guarantee only valid for products bought direct from Abcam or one of our authorized distributors