

Product datasheet

Anti-SMC1 antibody [C2M] ab16147

★★★★★ 1 Abreviews [画像数 1](#)

製品の概要

製品名	Anti-SMC1 antibody [C2M]
製品の詳細	Mouse monoclonal [C2M] to SMC1
由来種	Mouse
アプリケーション	適用あり: WB
種交差性	交差種: Human
免疫原	Recombinant fragment, corresponding to amino acids 402-894 of Human SMC1.
ポジティブ・コントロール	HeLa cells.

製品の特性

製品の状態	Liquid
保存方法	Shipped at 4°C. Upon delivery aliquot and store at -20°C. Avoid freeze / thaw cycles.
バッファー	Preservative: 0.08% Sodium azide Constituent: PBS
精製度	Protein A/G purified
ポリ/モノ	モノクローナル
クローン名	C2M
アイソタイプ	IgG

アプリケーション

Our [Abpromise guarantee](#) covers the use of **ab16147** in the following tested applications.

The application notes include recommended starting dilutions; optimal dilutions/concentrations should be determined by the end user.

アプリケーション	Abreviews	特記事項
WB	★★★★★	

追加情報

WB: Use at a concentration of 1 - 5 µg/ml. Detects a band of approximately 166 kDa (predicted molecular weight: 143 kDa).

Several customers have reported the antibody not working well in IHC. We have also had reports

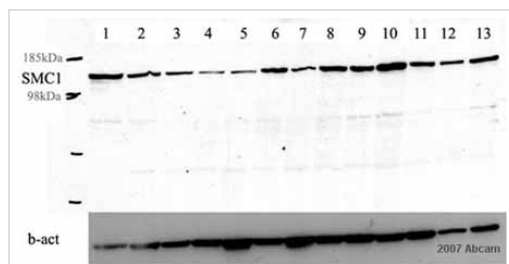
that this antibody does not work in ICC/IF on HeLa cells.

Not yet tested in other applications.

Optimal dilutions/concentrations should be determined by the end user.

ターゲット情報

画像



Western blot - Anti-SMC1 antibody [C2M] (ab16147)

This image is courtesy of an anonymous Abreview

All lanes : Anti-SMC1 antibody [C2M] (ab16147) at 1/1000 dilution

Lane 1 : Human BT-20 (breast cancer cell line) - whole cell lysate

Lane 2 : Human BT-474 (breast cancer cell line) - whole cell lysate

Lane 3 : Human HBL-100 (breast cancer cell line) - whole cell lysate

Lane 4 : Human HCC-1937 (breast cancer cell line) - whole cell lysate

Lane 5 : Human HME-1 (breast cancer cell line) - whole cell lysate

Lane 6 : Human Hs-578T (breast cancer cell line) - whole cell lysate

Lane 7 : Human MCF-10A (breast cancer cell line) - whole cell lysate

Lane 8 : Human MDA-MB 157 (breast cancer cell line) - whole cell lysate

Lane 9 : Human MDA-MB 231 (breast cancer cell line) - whole cell lysate

Lane 10 : Human MDA-MB 436 (breast cancer cell line) - whole cell lysate

Lane 11 : Human MDA-MB 453 (breast cancer cell line) - whole cell lysate

Lane 12 : Human MDA-MB 549 (breast cancer cell line) - whole cell lysate

Lane 13 : Human T47D (breast cancer cell line) - whole cell lysate

Lysates/proteins at 50 µg per lane.

Secondary

All lanes : HRP conjugated rabbit anti-mouse at 1/3000 dilution

Developed using the ECL technique.

Performed under reducing conditions.

Predicted band size: 143 kDa

Observed band size: 150 kDa

[why is the actual band size different from the predicted?](#)

Exposure time: 6 minutes

Please note: All products are "FOR RESEARCH USE ONLY AND ARE NOT INTENDED FOR DIAGNOSTIC OR THERAPEUTIC USE"

Our Abpromise to you: Quality guaranteed and expert technical support

- Replacement or refund for products not performing as stated on the datasheet
- Valid for 12 months from date of delivery
- Response to your inquiry within 24 hours

- We provide support in Chinese, English, French, German, Japanese and Spanish
- Extensive multi-media technical resources to help you
- We investigate all quality concerns to ensure our products perform to the highest standards

If the product does not perform as described on this datasheet, we will offer a refund or replacement. For full details of the Abpromise, please visit <https://www.abcam.co.jp/abpromise> or contact our technical team.

Terms and conditions

- Guarantee only valid for products bought direct from Abcam or one of our authorized distributors