

Product datasheet

Anti-SLC15A1 antibody ab123314

1 References [画像数 1](#)

製品の概要

製品名	Anti-SLC15A1 antibody
製品の詳細	Rabbit polyclonal to SLC15A1
由来種	Rabbit
アプリケーション	適用あり: WB
種交差性	交差種: Human
免疫原	Synthetic peptide conjugated to KLH, corresponding to a region within C terminal amino acids 662-692 of Human SLC15A1 (NP_005064.1).
ポジティブ・コントロール	CEM cell line lysates.

製品の特性

製品の状態	Liquid
保存方法	Shipped at 4°C. Store at 4°C (up to 6 months). Store at -20°C long term.
バッファー	Preservative: 0.09% Sodium azide Constituent: 99% PBS
精製度	Immunogen affinity purified
特記事項 (精製)	ab123314 is purified through a protein A column, followed by peptide affinity purification.
ポリ/モノ	ポリクローナル
アイソタイプ	IgG

アプリケーション

Our [Abpromise guarantee](#) covers the use of **ab123314** in the following tested applications.

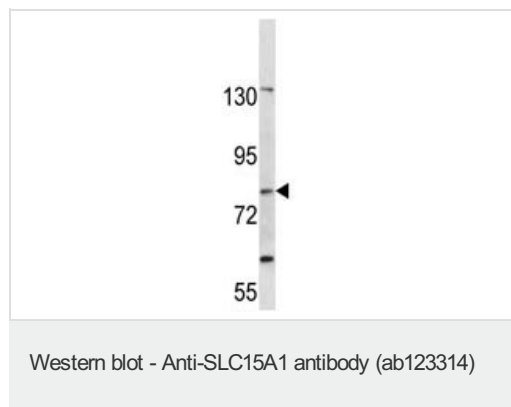
The application notes include recommended starting dilutions; optimal dilutions/concentrations should be determined by the end user.

アプリケーション	Abreviews	特記事項
WB		1/100 - 1/500. Predicted molecular weight: 79 kDa.

ターゲット情報

機能	Proton-coupled intake of oligopeptides of 2 to 4 amino acids with a preference for dipeptides. May constitute a major route for the absorption of protein digestion end-products.
配列類似性	Belongs to the PTR2/POT transporter (TC 2.A.17) family.
細胞内局在	Membrane.

## 画像



Anti-SLC15A1 antibody (ab123314) at 1/100 dilution + CEM cell line lysate at 35 µg

Developed using the ECL technique.

**Predicted band size:** 79 kDa

**Please note:** All products are "FOR RESEARCH USE ONLY AND ARE NOT INTENDED FOR DIAGNOSTIC OR THERAPEUTIC USE"

## Our Abpromise to you: Quality guaranteed and expert technical support

- Replacement or refund for products not performing as stated on the datasheet
- Valid for 12 months from date of delivery
- Response to your inquiry within 24 hours
- We provide support in Chinese, English, French, German, Japanese and Spanish
- Extensive multi-media technical resources to help you
- We investigate all quality concerns to ensure our products perform to the highest standards

If the product does not perform as described on this datasheet, we will offer a refund or replacement. For full details of the Abpromise, please visit <https://www.abcam.co.jp/abpromise> or contact our technical team.

## Terms and conditions

- Guarantee only valid for products bought direct from Abcam or one of our authorized distributors