

## Product datasheet

# Anti-SGLT2 antibody ab37296

★★★★☆ 2 Abreviews 4 References 画像数 2

### 製品の概要

製品名	Anti-SGLT2 antibody
製品の詳細	Rabbit polyclonal to SGLT2
由来種	Rabbit
特異性	The antibody detects 74 kDa SGLT-2 from human, mouse, and rat origins. Reactivity to other species has not been determined. A ~55 kDa and a ~45 kDa band can also be detected, representing the SGLT-2 cleavage fragments.
アプリケーション	<b>適用あり:</b> IHC-Fr, ICC/IF, WB
種交差性	<b>交差種:</b> Mouse, Rat, Human
免疫原	Synthetic peptide near the N terminus of SGLT2 (Mouse).

### 法規制情報

**医薬用外毒物**

### 製品の特性

製品の状態	Liquid
保存方法	Shipped at 4°C. Upon delivery aliquot and store at -20°C or -80°C. Avoid repeated freeze / thaw cycles.
バッファー	Preservative: 0.02% Thimerosal (merthiolate) Constituents: 50% Glycerol, 1% BSA, PBS
精製度	Protein A purified
ポリモノ	ポリクローナル
アイソタイプ	IgG

### アプリケーション

Our [Abpromise guarantee](#) covers the use of **ab37296** in the following tested applications.

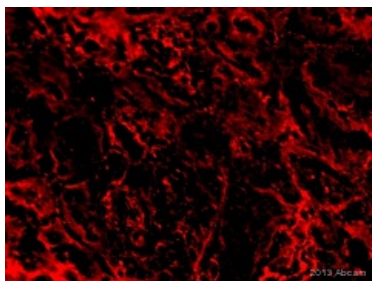
The application notes include recommended starting dilutions; optimal dilutions/concentrations should be determined by the end user.

アプリケーション	Abreviews	特記事項
IHC-Fr	★★★★☆	Use at an assay dependent concentration.
ICC/IF		Use at an assay dependent concentration. PubMed: 21872923
WB		Use a concentration of 1 - 4 µg/ml. Predicted molecular weight: 73 kDa.

## ターゲット情報

機能	Sodium-dependent glucose transporter. Has a Na(+) to glucose coupling ratio of 1:1. Efficient substrate transport in mammalian kidney is provided by the concerted action of a low affinity high capacity and a high affinity low capacity Na(+)/glucose cotransporter arranged in series along kidney proximal tubules.
関連疾患	Defects in SLC5A2 are the cause of renal glucosuria (GLYS1) [MIM:233100]. GLYS1 is an autosomal recessive disorder characterized by a normal fasting serum glucose concentration and persistent isolated glucosuria, with a normal glucose tolerance test.
配列類似性	Belongs to the sodium:solute symporter (SSF) (TC 2.A.21) family.
細胞内局在	Membrane.

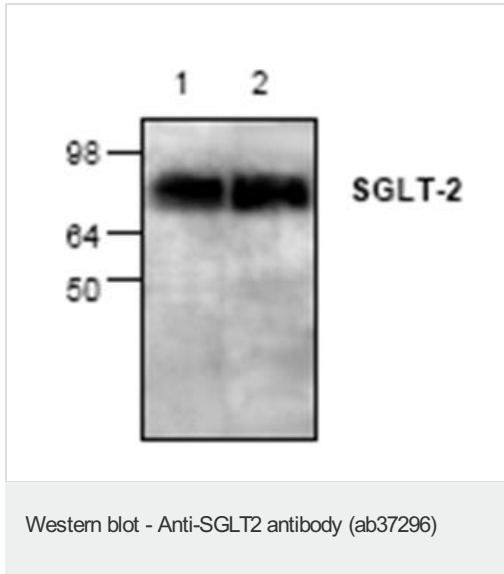
## 画像



Immunohistochemical analysis of mouse kidney frozen section, labeling SGLT2 with ab37296. Tissue sections were fixed with acetone. Blocking was with 2% horse serum for 1 hour at room temperature. Incubation for 16 hours at 4°C with ab37296 diluted 1/100 in 2% horse serum in 1XPBS.

Immunohistochemistry (Frozen sections) - Anti-SGLT2 antibody (ab37296)

This image is courtesy of an Abreview submitted by Domenica McCarthy.



**All lanes :** Anti-SGLT2 antibody (ab37296) at 4 µg/ml

**Lane 1 :** Jurkat cell lysate

**Lane 2 :** Mouse small intestine tissue lysate

**Predicted band size:** 73 kDa

**Please note:** All products are "FOR RESEARCH USE ONLY AND ARE NOT INTENDED FOR DIAGNOSTIC OR THERAPEUTIC USE"

### Our Abpromise to you: Quality guaranteed and expert technical support

- Replacement or refund for products not performing as stated on the datasheet
- Valid for 12 months from date of delivery
- Response to your inquiry within 24 hours
- We provide support in Chinese, English, French, German, Japanese and Spanish
- Extensive multi-media technical resources to help you
- We investigate all quality concerns to ensure our products perform to the highest standards

If the product does not perform as described on this datasheet, we will offer a refund or replacement. For full details of the Abpromise, please visit <https://www.abcam.co.jp/abpromise> or contact our technical team.

### Terms and conditions

- Guarantee only valid for products bought direct from Abcam or one of our authorized distributors