


Product datasheet

Anti-SAPS2 antibody ab72031

画像数 2

製品の概要

製品名	Anti-SAPS2 antibody
製品の詳細	Rabbit polyclonal to SAPS2
由来種	Rabbit
アプリケーション	適用あり: WB, IP
種交差性	交差種: Human 交差が予測される動物種: Chimpanzee 
免疫原	Synthetic peptide from a region between residue 775 and 825 of human SAPS2, NP_055493.2.
ポジティブ・コントロール	Whole cell lysate from Hela and 293T cells.

製品の特性

製品の状態	Liquid
保存方法	Shipped at 4°C. Upon delivery aliquot and store at -20°C. Avoid freeze / thaw cycles.
バッファー	Preservative: 0.09% Sodium Azide Constituents: 0.1% BSA, Tris buffered saline
精製度	Immunogen affinity purified
ポリ/モノ	ポリクローナル
アイソタイプ	IgG

アプリケーション

Our [Abpromise guarantee](#) covers the use of **ab72031** in the following tested applications.

The application notes include recommended starting dilutions; optimal dilutions/concentrations should be determined by the end user.

アプリケーション	Abreviews	特記事項
WB		
IP		

追加情報

IP: Use at 2-5µg/mg of lysate.

WB: 1/2000 - 1/10000. Detects bands of approximately 130 and 150 kDa (predicted molecular weight: 105 kDa).

Not yet tested in other applications.

Optimal dilutions/concentrations should be determined by the end user.

ターゲット情報

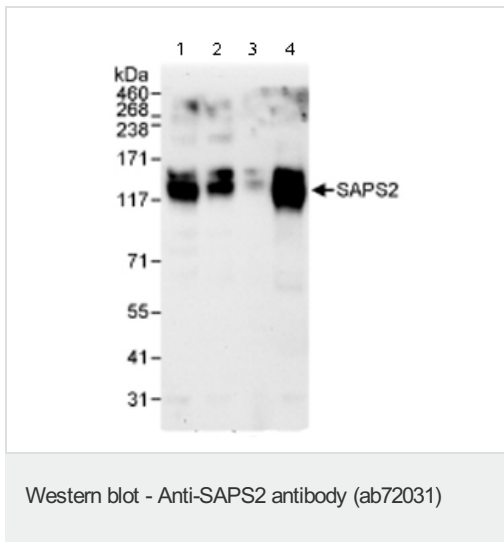
関連性

SAPS2 is a regulatory subunit for the protein phosphatase-6 catalytic subunit (PPP6C). Protein phosphatase regulatory subunits, such as SAPS2, modulate the activity of protein phosphatase catalytic subunits by restricting substrate specificity, recruiting substrates, and determining the intracellular localization of the holoenzyme. It is ubiquitously expressed with strongest expression in the testis followed by liver, heart, kidney, brain and placenta. There are two named isoforms.

細胞内局在

Cytoplasm

画像



All lanes : Anti-SAPS2 antibody (ab72031) at 0.04 µg/ml

Lane 1 : Whole cell lysate from HeLa cells at 50 µg

Lane 2 : Whole cell lysate from HeLa cells at 15 µg

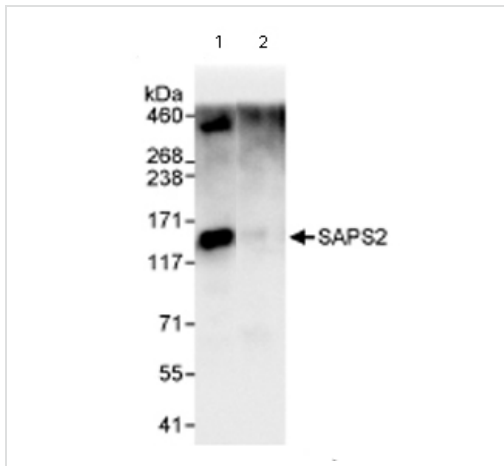
Lane 3 : Whole cell lysate from HeLa cells at 5 µg

Lane 4 : Whole cell lysate from 293T cells at 50 µg

Predicted band size: 105 kDa

Observed band size: 130 kDa

Additional bands at: 150 kDa. We are unsure as to the identity of these extra bands.



Immunoprecipitation - Anti-SAPS2 antibody
(ab72031)

Immunoprecipitation/ Western Blot of SAPS2.
Lane 1: ab72031 at 3µg/mg whole cell lysate.
Lane 2: Control IgG.
Whole cell lysate from Hela cells at 1mg for IP,
20% of IP loaded.
ab72031 at 1 µg/ml was used for the Western
blot detection step.
Chemiluminescence with an exposure time of
3 seconds.

Please note: All products are "FOR RESEARCH USE ONLY AND ARE NOT INTENDED FOR DIAGNOSTIC OR THERAPEUTIC USE"

Our Abpromise to you: Quality guaranteed and expert technical support

- Replacement or refund for products not performing as stated on the datasheet
- Valid for 12 months from date of delivery
- Response to your inquiry within 24 hours
- We provide support in Chinese, English, French, German, Japanese and Spanish
- Extensive multi-media technical resources to help you
- We investigate all quality concerns to ensure our products perform to the highest standards

If the product does not perform as described on this datasheet, we will offer a refund or replacement. For full details of the Abpromise, please visit <https://www.abcam.co.jp/abpromise> or contact our technical team.

Terms and conditions

- Guarantee only valid for products bought direct from Abcam or one of our authorized distributors