

Product datasheet

Recombinant mouse SCF protein ab106309

画像数 1

製品の概要

製品名	Recombinant mouse SCF protein
タンパク質長	Full length protein

製品の詳細

由来	Recombinant
由来	Escherichia coli

アミノ酸配列

アクセッション番号 [P20826](#)

生物種	Mouse
分子量	18 kDa
領域	26 to 190

配列の追加情報 Murine SCF is a 18.3 kDa protein containing 164 amino acid residues, as the soluble form is produced by proteolytic processing of isoform 1 in the extracellular domain.

特性

Our [Abpromise guarantee](#) covers the use of **ab106309** in the following tested applications.

The application notes include recommended starting dilutions; optimal dilutions/concentrations should be determined by the end user.

生理活性 The ED₅₀ as determined by the dose-dependent stimulation of the proliferation of the human TF-1 cell line is < 10 ng/ml, corresponding to a specific activity of >1 x 10⁵ units/mg.

アプリケーション SDS-PAGE
Functional Studies

エンドトキシン・レベル < 0.100 Eu/μg

精製度 > 98 % SDS-PAGE.

製品の状態 Lyophilised

備考 Endotoxin level: < 0.1 ng/g of SCF

前処理および保存

保存方法および安定性

Shipped at 4°C. After reconstitution store at -20°C. Avoid freeze / thaw cycles.

pH: 7.40

Constituents: 0.363% Tris, 0.58% Sodium chloride

This product is an active protein and may elicit a biological response in vivo, handle with caution.

再構成

Reconstitute in 50 mM acetic acid or water to a concentration of 0.1 mg/ml. **Do not vortex**

関連情報

機能

Ligand for the receptor-type protein-tyrosine kinase KIT. Plays an essential role in the regulation of cell survival and proliferation, hematopoiesis, stem cell maintenance, gametogenesis, mast cell development, migration and function, and in melanogenesis. KITLG/SCF binding can activate several signaling pathways. Promotes phosphorylation of PIK3R1, the regulatory subunit of phosphatidylinositol 3-kinase, and subsequent activation of the kinase AKT1. KITLG/SCF and KIT also transmit signals via GRB2 and activation of RAS, RAF1 and the MAP kinases MAPK1/ERK2 and/or MAPK3/ERK1. KITLG/SCF and KIT promote activation of STAT family members STAT1, STAT3 and STAT5. KITLG/SCF and KIT promote activation of PLCG1, leading to the production of the cellular signaling molecules diacylglycerol and inositol 1,4,5-trisphosphate. KITLG/SCF acts synergistically with other cytokines, probably interleukins.

関連疾患

Hyperpigmentation with or without hypopigmentation, familial progressive Deafness, congenital, unilateral or asymmetric

配列類似性

Belongs to the SCF family.

発生段階

Acts in the early stages of hematopoiesis.

翻訳後修飾

A soluble form (sKITLG) is produced by proteolytic processing of isoform 1 in the extracellular domain.

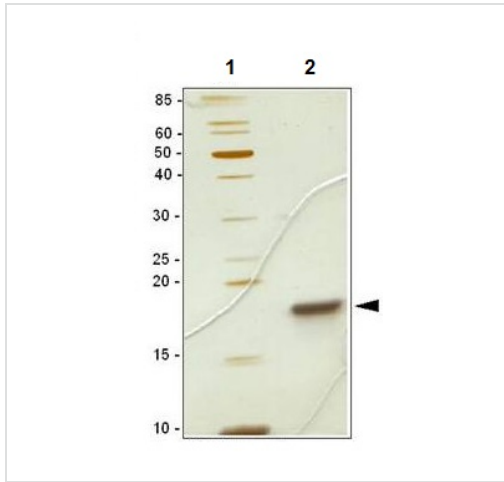
Found in two differentially glycosylated forms, LMW-SCF and HMW-SCF. LMW-SCF is fully N-glycosylated at Asn-145, partially N-glycosylated at Asn-90, O-glycosylated at Ser-167, Thr-168 and Thr-180, and not glycosylated at Asn-97 or Asn-118. HMW-SCF is N-glycosylated at Asn-118, Asn-90 and Asn-145, O-glycosylated at Ser-167, Thr-168 and Thr-180, and not glycosylated at Asn-97.

A soluble form exists as a cleavage product of the extracellular domain.

細胞内局在

Secreted; Cell membrane and Cytoplasm. Cytoplasm, cytoskeleton. Cell membrane. Cell projection, lamellipodium. Cell projection, filopodium.

画像



15% SDS-PAGE.

Lane 1: Molecular weight marker.

Lane 2: SCF protein.

Visualised by silver stain.

SDS-PAGE - Recombinant mouse SCF protein
(ab106309)

Please note: All products are "FOR RESEARCH USE ONLY AND ARE NOT INTENDED FOR DIAGNOSTIC OR THERAPEUTIC USE"

Our Abpromise to you: Quality guaranteed and expert technical support

- Replacement or refund for products not performing as stated on the datasheet
- Valid for 12 months from date of delivery
- Response to your inquiry within 24 hours
- We provide support in Chinese, English, French, German, Japanese and Spanish
- Extensive multi-media technical resources to help you
- We investigate all quality concerns to ensure our products perform to the highest standards

If the product does not perform as described on this datasheet, we will offer a refund or replacement. For full details of the Abpromise, please visit <https://www.abcam.co.jp/abpromise> or contact our technical team.

Terms and conditions

- Guarantee only valid for products bought direct from Abcam or one of our authorized distributors