

Product datasheet

Recombinant human TRAP1 protein ab123775

画像数 1

製品の概要

製品名	Recombinant human TRAP1 protein
タンパク質長	Full length protein

製品の詳細

由来	Recombinant
由来	Escherichia coli
アミノ酸配列	
アクセッション番号	Q12931
生物種	Human
分子量	77 kDa including tags
タグ	DDDDK tag C-Terminus
配列の追加情報	Immunogen length = 702 amino acid residues

特性

Our [Abpromise guarantee](#) covers the use of **ab123775** in the following tested applications.

The application notes include recommended starting dilutions; optimal dilutions/concentrations should be determined by the end user.

生理活性	<p>SPECIFIC ACTIVITY:</p> <p>Kd = 1.95 nM Assay conditions: 20 mM HEPES, pH 7.5, 50 mM KCl, 5 mM MgCl₂, 20 mM sodium molybdate, 2 mM DTT, 0.01% NP40, 100 µg/ml BSA, 50 nM TRAP1, geldanamycin-FITC (titration range 0.016-16 nM) incubated at 4°C for 24 hrs. Fluorescence polarization measured at RT (Ex/Em= 485/520 nm)</p>
------	---

アプリケーション	<p>SDS-PAGE</p> <p>Functional Studies</p>
----------	---

精製度	> 95 % SDS-PAGE.
-----	------------------

製品の状態	Liquid
-------	--------

備考	<p>Kd = 1.95 nM. Assay conditions: 20 mM HEPES, pH 7.5, 50 mM KCl, 5 mM MgCl₂, 20 mM sodium molybdate, 2 mM DTT, 0.01% NP40, 100 µg/ml BSA, 50 nM TRAP1, geldanamycin-FITC (titration range 0.016-16 nM) incubated at 4°C for 24 hrs. Fluorescence polarization measured at RT (Ex/Em= 485/520 nm).</p>
----	--

前処理および保存

保存方法および安定性

Shipped on dry ice. Upon delivery aliquot and store at -80°C. Avoid freeze / thaw cycles.

pH: 7.40

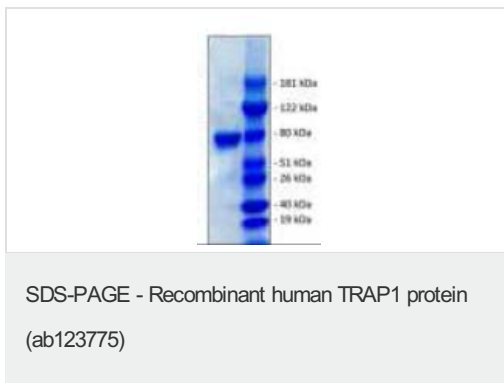
Constituents: 1.06% Potassium phosphate, 0.008% DTT, 0.015% EDTA, 2.5% Glycerol, 0.29% Sodium chloride

This product is an active protein and may elicit a biological response in vivo, handle with caution.

関連情報

機能	Chaperone that expresses an ATPase activity.
組織特異性	Found in skeletal muscle, liver, heart, brain, kidney, pancreas, lung and placenta.
配列類似性	Belongs to the heat shock protein 90 family.
細胞内局在	Mitochondrion.

画像



10% SDS-PAGE staining 2 ug Liver TRAP1.

Please note: All products are "FOR RESEARCH USE ONLY AND ARE NOT INTENDED FOR DIAGNOSTIC OR THERAPEUTIC USE"

Our Abpromise to you: Quality guaranteed and expert technical support

- Replacement or refund for products not performing as stated on the datasheet
- Valid for 12 months from date of delivery
- Response to your inquiry within 24 hours
- We provide support in Chinese, English, French, German, Japanese and Spanish
- Extensive multi-media technical resources to help you
- We investigate all quality concerns to ensure our products perform to the highest standards

If the product does not perform as described on this datasheet, we will offer a refund or replacement. For full details of the Abpromise, please visit <https://www.abcam.co.jp/abpromise> or contact our technical team.

Terms and conditions

- Guarantee only valid for products bought direct from Abcam or one of our authorized distributors