

Product datasheet

Recombinant human Rsk 2 / MAPKAP Kinase 1b protein
ab60881

1 References 画像数 2

製品の概要

製品名 Recombinant human Rsk 2 / MAPKAP Kinase 1b protein
タンパク質長 Full length protein

法規制情報

カルタヘナ法

製品の詳細

由来 Recombinant
由来 Baculovirus infected Sf9 cells
アミノ酸配列
生物種 Human

特性

Our [Abpromise guarantee](#) covers the use of **ab60881** in the following tested applications.

The application notes include recommended starting dilutions; optimal dilutions/concentrations should be determined by the end user.

アプリケーション SDS-PAGE
Functional Studies
精製度 > 90 % SDS-PAGE.
Purity: >90% as determined by densitometry.
製品の状態 Liquid
備考 [ab204879](#) (RPS6 peptide) can be utilized as a substrate for assessing kinase activity

前処理および保存

保存方法および安定性 Shipped on dry ice. Upon delivery aliquot and store at -80°C. Avoid freeze / thaw cycles.

pH: 7.50

Constituents: 0.0038% EGTA, 0.00174% PMSF, 0.00385% DTT, 0.79% Tris HCl, 0.00292% EDTA, 25% Glycerol, 0.87% Sodium chloride

This product is an active protein and may elicit a biological response in vivo, handle with caution.

関連情報

機能

Serine/threonine kinase that may play a role in mediating the growth-factor and stress induced activation of the transcription factor CREB.

組織特異性

Expressed in many tissues, highest levels in skeletal muscle.

関連疾患

Defects in RPS6KA3 are the cause of Coffin-Lowry syndrome (CLS) [MIM:303600]; an X-linked dominant disorder characterized by severe mental retardation with facial and digital dysmorphisms, and progressive skeletal deformations.

配列類似性

Belongs to the protein kinase superfamily. AGC Ser/Thr protein kinase family. S6 kinase subfamily.

Contains 1 AGC-kinase C-terminal domain.

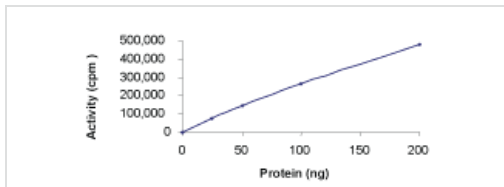
Contains 2 protein kinase domains.

翻訳後修飾

Autophosphorylated on Ser-386, as part of the activation process.

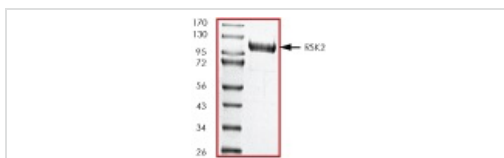
Ser-227 phosphorylation promotes Ser-386 phosphorylation and leads to basal activation. Full activation by growth factors requires additional phosphorylation on Ser-369.

画像



Sample Kinase Activity Plot.

Functional Studies - Recombinant human Rsk 2 /
MAPKAP Kinase 1b protein (ab60881)



ab60881 on SDS-PAGE, MW ~112 kDa.

SDS-PAGE - Recombinant human Rsk 2 /
MAPKAP Kinase 1b protein (ab60881)

Please note: All products are "FOR RESEARCH USE ONLY AND ARE NOT INTENDED FOR DIAGNOSTIC OR THERAPEUTIC USE"

Our Abpromise to you: Quality guaranteed and expert technical support

- Replacement or refund for products not performing as stated on the datasheet
- Valid for 12 months from date of delivery
- Response to your inquiry within 24 hours

- We provide support in Chinese, English, French, German, Japanese and Spanish
- Extensive multi-media technical resources to help you
- We investigate all quality concerns to ensure our products perform to the highest standards

If the product does not perform as described on this datasheet, we will offer a refund or replacement. For full details of the Abpromise, please visit <https://www.abcam.co.jp/abpromise> or contact our technical team.

Terms and conditions

- Guarantee only valid for products bought direct from Abcam or one of our authorized distributors