

## Product datasheet

# Recombinant human PAK1 protein ab95253

### 画像数 2

#### 製品の概要

---

製品名	Recombinant human PAK1 protein
タンパク質長	Protein fragment

#### 製品の詳細

---

由来	Recombinant
由来	Escherichia coli

#### アミノ酸配列

生物種	Human
領域	248 to 545

#### 特性

---

Our [Abpromise guarantee](#) covers the use of **ab95253** in the following tested applications.

The application notes include recommended starting dilutions; optimal dilutions/concentrations should be determined by the end user.

生理活性	<p>Specific Activity: 32638 pmoles/min/μg. Analysis of enzymatic activity was performed according to Zlyte assay protocol:</p> <p>Different concentration of PAK1 were incubated in a buffer containing 50 mM HEPES (pH7.5), 10 mM MgCl<sub>2</sub>, 1 mM EGTA, 200 μM ATP, 0.01% Brij-35, and 2 μM substrate (SER/THR14) at room temperature for 1 hour.</p> <p>Developer solution was added to reaction and reaction was stopped after 1h of incubation at RT.</p> <p>Fluorescence was then detected using Lambda exc=460±40 nm and Lambda em=528±20 nm filters.</p>
------	--

アプリケーション	<p>Functional Studies</p> <p>SDS-PAGE</p>
----------	---

精製度	> 95 % SDS-PAGE.
-----	------------------

製品の状態	Liquid
-------	--------

#### 前処理および保存

---

## 保存方法および安定性

Shipped on Dry Ice. Upon delivery aliquot. Store at -80°C. Avoid freeze / thaw cycle.

Preservative: None

Constituents: 10% Glycerol, 5mM DTT, 25mM Tris HCl, 150mM Sodium chloride, pH 8.0

This product is an active protein and may elicit a biological response in vivo, handle with caution.

## 関連情報

### 機能

The activated kinase acts on a variety of targets. Likely to be the GTPase effector that links the Rho-related GTPases to the JNK MAP kinase pathway. Activated by CDC42 and RAC1. Involved in dissolution of stress fibers and reorganization of focal complexes. Involved in regulation of microtubule biogenesis through phosphorylation of TBCB. Activity is inhibited in cells undergoing apoptosis, potentially due to binding of CDC2L1 and CDC2L2.

### 配列類似性

Belongs to the protein kinase superfamily. STE Ser/Thr protein kinase family. STE20 subfamily. Contains 1 CRIB domain. Contains 1 protein kinase domain.

### 翻訳後修飾

Autophosphorylated when activated by CDC42/p21 and RAC1.

### 細胞内局在

Cytoplasm. Cell junction > focal adhesion. Recruited to focal adhesions upon activation.

## 画像

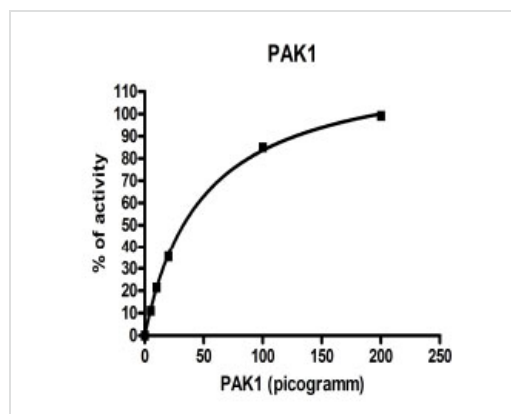
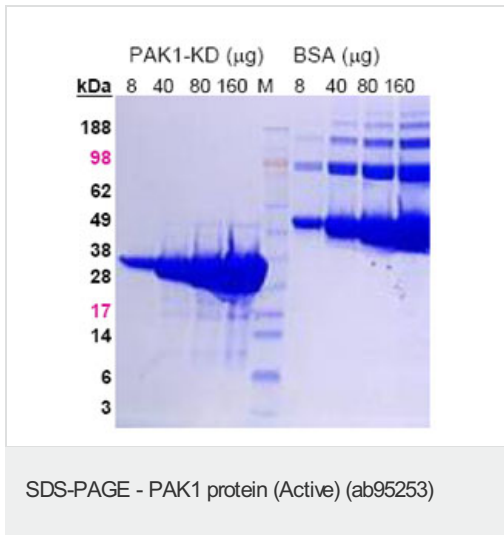


Image showing specific activity of ab95253.

Functional Studies - PAK1 protein (Active)  
(ab95253)



SDS-PAGE analysis of PAK1 (ab95253) and BSA at conc. of 8, 40, 80 and 160 µg/ml.

**Please note:** All products are "FOR RESEARCH USE ONLY AND ARE NOT INTENDED FOR DIAGNOSTIC OR THERAPEUTIC USE"

### Our Abpromise to you: Quality guaranteed and expert technical support

- Replacement or refund for products not performing as stated on the datasheet
- Valid for 12 months from date of delivery
- Response to your inquiry within 24 hours
- We provide support in Chinese, English, French, German, Japanese and Spanish
- Extensive multi-media technical resources to help you
- We investigate all quality concerns to ensure our products perform to the highest standards

If the product does not perform as described on this datasheet, we will offer a refund or replacement. For full details of the Abpromise, please visit <https://www.abcam.co.jp/abpromise> or contact our technical team.

### Terms and conditions

- Guarantee only valid for products bought direct from Abcam or one of our authorized distributors