

Product datasheet

Recombinant human IL-3 protein ab83685

画像数 3

製品の概要

製品名	Recombinant human IL-3 protein
タンパク質長	Full length protein

製品の詳細

由来	Recombinant
由来	HEK 293 cells
アミノ酸配列	
生物種	Human
配列	<p>Theoretical sequence:</p> <p>APMTQTTSLKTSWVNCNSMIDEIITHLKQPPLPLLDFFNNL          NGEDQDILME NNLRRPN          LEAFNRAVKSLQNASAIESILKNLLPCLPLATAAPTRHPI          H IKDGDWNEFRRKLTFFYL KTLNAQAQQTTLSLAIF</p>

特性

Our [Abpromise guarantee](#) covers the use of **ab83685** in the following tested applications.

The application notes include recommended starting dilutions; optimal dilutions/concentrations should be determined by the end user.

生理活性	Activity: The ED <sub>50</sub> of ab83685 is typically 0.1- 0.4 ng/ml as measured using the human growth factor dependent TF1 cell line.
アプリケーション	SDS-PAGE Functional Studies
精製度	> 95 % SDS-PAGE.
製品の状態	Lyophilised

前処理および保存

保存方法および安定性	<p>Shipped at 4°C. Store at +4°C.</p> <p>Constituents: PBS, 1% Human serum albumin, 10% Trehalose</p> <p>This product is an active protein and may elicit a biological response in vivo, handle with caution.</p>
------------	---

**再構成** It is recommended that 0.5 ml of sterile phosphate-buffered saline be added to the vial. Short-term storage at 4°C is recommended, and longer-term storage of aliquots at -18 to -20°C. Repeated freeze thawing is not recommended.

**関連情報**

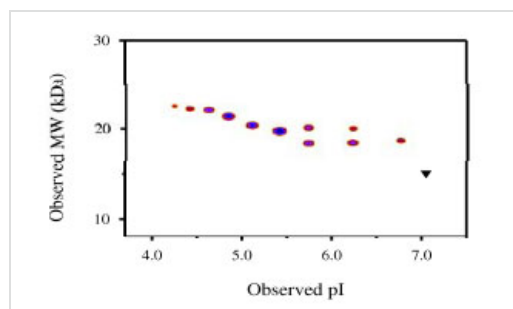
**機能** Granulocyte/macrophage colony-stimulating factors are cytokines that act in hematopoiesis by controlling the production, differentiation, and function of 2 related white cell populations of the blood, the granulocytes and the monocytes-macrophages.  
This CSF induces granulocytes, macrophages, mast cells, stem cells, erythroid cells, eosinophils and megakaryocytes.

**組織特異性** Activated T-cells, mast cells, natural killer cells.

**配列類似性** Belongs to the IL-3 family.

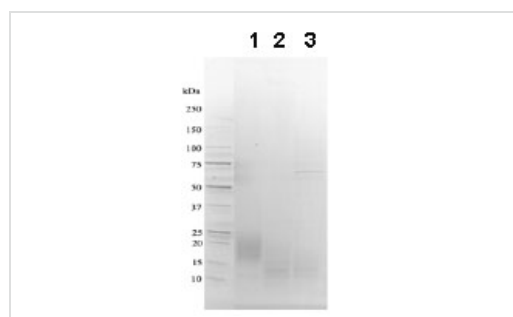
**細胞内局在** Secreted.

**画像**



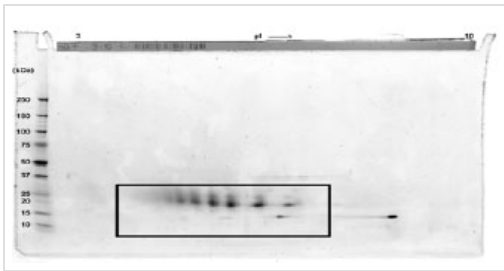
Densitometry of protein isoforms visualised by 2-DE. The triangle indicates the theoretical MW and pI of the protein.

Functional Studies - Recombinant human IL-3 protein (ab83685)



1D gel data:  
Lane 1 ab83685  
Lane 2 ab83685 treated with PNGase F to remove potential N-linked glycans  
Lane 4 ab83685 treated with a glycosidase cocktail to remove potential N- and O-linked glycans.  
5 µg protein loaded per lane; Deep Purple™ stained. Drop in MW after treatment with PNGase F indicates presence of N-linked glycans. Faint bands in lane 2 and lane 3 are glycosidase enzymes.

SDS-PAGE - Recombinant human IL-3 protein (ab83685)



SDS-PAGE - Recombinant human IL-3 protein  
(ab83685)

#### 2D gel data:

A sample of ab83685 without carrier protein was reduced and alkylated and focused on a 3-10 IPG strip then run on a 4-20% Tris-HCl 2D gel. 40 µg protein loaded per lane; Deep Purple™ stained. Spot train indicates presence of multiple isoforms of ab83685. Spots within the spot train were cut from the gel and identified as IL-3 by protein mass fingerprinting.

**Please note:** All products are "FOR RESEARCH USE ONLY AND ARE NOT INTENDED FOR DIAGNOSTIC OR THERAPEUTIC USE"

### Our Abpromise to you: Quality guaranteed and expert technical support

- Replacement or refund for products not performing as stated on the datasheet
- Valid for 12 months from date of delivery
- Response to your inquiry within 24 hours
- We provide support in Chinese, English, French, German, Japanese and Spanish
- Extensive multi-media technical resources to help you
- We investigate all quality concerns to ensure our products perform to the highest standards

If the product does not perform as described on this datasheet, we will offer a refund or replacement. For full details of the Abpromise, please visit <https://www.abcam.co.jp/abpromise> or contact our technical team.

### Terms and conditions

- Guarantee only valid for products bought direct from Abcam or one of our authorized distributors