

Product datasheet

Recombinant Human xCT protein ab112403

画像数 1

製品の概要

製品名	Recombinant Human xCT protein
タンパク質長	Full length protein

製品の詳細

由来	Recombinant
由来	Wheat germ

アミノ酸配列

アクセッション番号 [Q9UPY5](#)

生物種 Human

配列 MVRKPVVSTISKGGYLQGNVNGRLPSLGNKEPPGQEKVQLKRKVTLLRGV
SIIIGTIIGAGIFISPKGVLQNTGSVGMSLTIWTVCGVLSLFGALSYAEL
GTTIKKSGGHYTYILEVFGPLPAFVRVWVELLIIRPAATAVISLAFGRYI
LEPFFIQCEIPELAIKLIKITAVGITVVMVLNSMSVSWASARIQIFLTFCKLT
AILIIIVPGVMQLIKGQTQNFKDAFSGRDSSITRLPLAFYYGMYAYAGWF
YLNFTVEEVENPEKTIPLAICISMAIVTIGYVLTNVAYFTTINAEELLS
NAVAVTFSERLLGNFSLAVPIFVALSCFGSMNGGVFAVSRLFYVASREGH
LPEILSMIHVRKHTPLPAVIVLHPLTMIMLFSGDLDSLNFVLSFARWLF
GLAVAGLIYLRKCPDMHRPFKVPLFIPALFSFTCLFMVALSLYSDPFST
GIGFVITLTGVPAYYLFIIWDDKPRWFRIMSEKITRTLQIILEVVPEEDK
L

分子量 81 kDa including tags

領域 1 to 501

特性

Our [Abpromise guarantee](#) covers the use of **ab112403** in the following tested applications.

The application notes include recommended starting dilutions; optimal dilutions/concentrations should be determined by the end user.

アプリケーション	ELISA
	SDS-PAGE
	Western blot
	Other

製品の状態

Liquid

備考

Best to use within three months from the date of receipt of this protein.

前処理および保存**保存方法および安定性**

Shipped on dry ice. Upon delivery aliquot and store at -80°C. Avoid freeze / thaw cycles.

pH: 8.00

Constituents: 0.79% Tris HCl, 0.31% Glutathione

関連情報**機能**

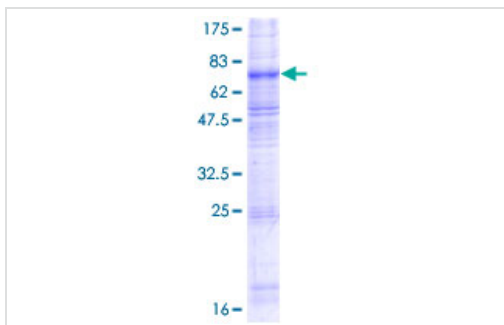
Sodium-independent, high-affinity exchange of anionic amino acids with high specificity for anionic form of cystine and glutamate.

配列類似性

Belongs to the amino acid-polyamine-organocation (APC) superfamily. L-type amino acid transporter (LAT) (TC 2.A.3.8) family.

細胞内局在

Membrane.

画像

12.5% SDS-PAGE analysis of ab112403.

Stained with Coomassie Blue

SDS-PAGE - Recombinant Human xCT protein
(ab112403)**Please note:** All products are "FOR RESEARCH USE ONLY AND ARE NOT INTENDED FOR DIAGNOSTIC OR THERAPEUTIC USE"**Our Abpromise to you: Quality guaranteed and expert technical support**

- Replacement or refund for products not performing as stated on the datasheet
- Valid for 12 months from date of delivery
- Response to your inquiry within 24 hours
- We provide support in Chinese, English, French, German, Japanese and Spanish
- Extensive multi-media technical resources to help you
- We investigate all quality concerns to ensure our products perform to the highest standards

If the product does not perform as described on this datasheet, we will offer a refund or replacement. For full details of the Abpromise,

please visit <https://www.abcam.co.jp/abpromise> or contact our technical team.

Terms and conditions

- Guarantee only valid for products bought direct from Abcam or one of our authorized distributors