


Product datasheet

Anti-RPL6 antibody ab50907

1 References [画像数 1](#)

製品の概要

製品名	Anti-RPL6 antibody
製品の詳細	Rabbit polyclonal to RPL6
由来種	Rabbit
アプリケーション	<b>適用あり:</b> WB, ELISA
種交差性	<b>交差種:</b> Human <b>交差が予測される動物種:</b> Mouse, Cow, Dog, Pig 
免疫原	A region within synthetic peptide: MAGEKVEKPD TKEKKPEAKK VDAGGKVKKG NLKAKKPKKG KPHCSRNPVL, corresponding to N terminal amino acids 1-50 of Human RPL6 <a href="#">Run BLAST with ExPASy</a> <a href="#">Run BLAST with NCBI</a>
ポジティブ・コントロール	Jurkat cell lysate.

製品の特性

製品の状態	Liquid
保存方法	Shipped at 4°C. Upon delivery aliquot and store at -20°C. Avoid freeze / thaw cycles.
バッファー	Preservative: 0.09% Sodium azide Constituents: 2% Sucrose, PBS
精製度	Protein A purified
ポリ/モノ	ポリクローナル
アイソタイプ	IgG

アプリケーション

Our [Abpromise guarantee](#) covers the use of **ab50907** in the following tested applications.

The application notes include recommended starting dilutions; optimal dilutions/concentrations should be determined by the end user.

アプリケーション	Abreviews	特記事項
WB		Use a concentration of 2.5 µg/ml. Predicted molecular weight: 33 kDa. Good results were obtained when blocked with 5% non-fat dry milk in 0.05% PBS-T.

アプリケーション	Abreviews	特記事項
----------	-----------	------

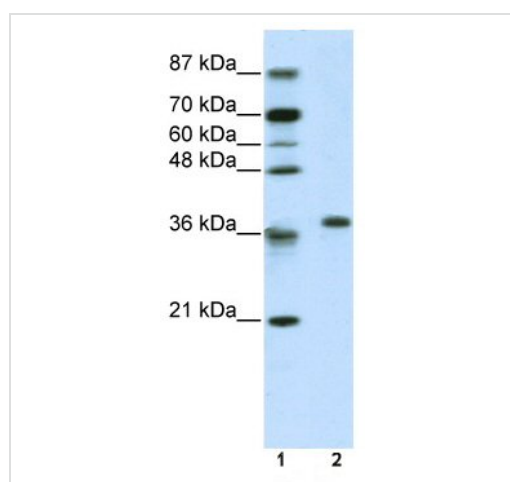
ELISA Use at an assay dependent concentration.  
ELISA titre using peptide based assay: 1/62500.

## ターゲット情報

**機能** Specifically binds to domain C of the Tax-responsive enhancer element in the long terminal repeat of HTLV-I.

**配列類似性** Belongs to the ribosomal protein L6e family.

## 画像



Western blot - Anti-RPL6 antibody (ab50907)

**Lane 1** : Marker

**Lane 2** : Anti-RPL6 antibody (ab50907) at 2.5 µg/ml

**Lane 2** : Jurkat cell lysate at 10 µg

### Secondary

**Lane 2** : HRP conjugated anti-Rabbit IgG at 1/50000 dilution

**Predicted band size:** 33 kDa

**Observed band size:** ~38 kDa

Gel concentration 12%

**Please note:** All products are "FOR RESEARCH USE ONLY AND ARE NOT INTENDED FOR DIAGNOSTIC OR THERAPEUTIC USE"

## Our Abpromise to you: Quality guaranteed and expert technical support

- Replacement or refund for products not performing as stated on the datasheet
- Valid for 12 months from date of delivery
- Response to your inquiry within 24 hours
- We provide support in Chinese, English, French, German, Japanese and Spanish
- Extensive multi-media technical resources to help you
- We investigate all quality concerns to ensure our products perform to the highest standards

If the product does not perform as described on this datasheet, we will offer a refund or replacement. For full details of the Abpromise, please visit <https://www.abcam.co.jp/abpromise> or contact our technical team.

## Terms and conditions

---

- Guarantee only valid for products bought direct from Abcam or one of our authorized distributors