

Product datasheet

Anti-RFX2 antibody ab79241

画像数 1

製品の概要

製品名	Anti-RFX2 antibody
製品の詳細	Rabbit polyclonal to RFX2
由来種	Rabbit
アプリケーション	適用あり: WB
種交差性	交差種: Human
免疫原	Synthetic peptide conjugated to KLH derived from within residues 700 to the C-terminus of Human RFX2. Immunogen の所有権に関して (Peptide available as ab89390 .)
ポジティブ・コントロール	This antibody gave a positive signal in the HeLa nuclear whole cell lysate.

製品の特性

製品の状態	Liquid
保存方法	Shipped at 4°C. Store at +4°C short term (1-2 weeks). Upon delivery aliquot. Store at -20°C or -80°C. Avoid freeze / thaw cycle.
バッファー	Preservative: 0.02% Sodium Azide Constituents: 1% BSA, PBS, pH 7.4
精製度	Immunogen affinity purified
ポリ/モノ	ポリクローナル
アイソタイプ	IgG

アプリケーション

Our [Abpromise guarantee](#) covers the use of **ab79241** in the following tested applications.

The application notes include recommended starting dilutions; optimal dilutions/concentrations should be determined by the end user.

アプリケーション	Abreviews	特記事項
WB		Use a concentration of 1 µg/ml. Detects a band of approximately 82 kDa (predicted molecular weight: 80 kDa).

ターゲット情報

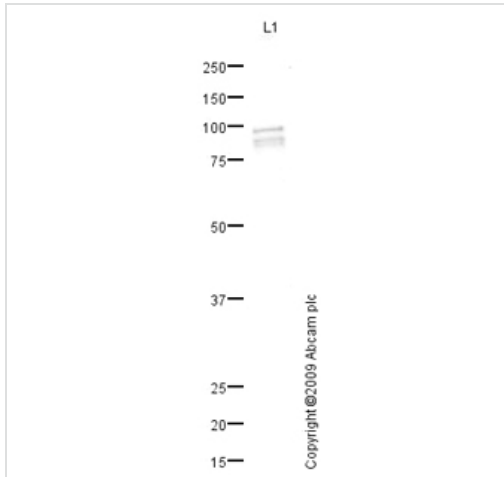
配列類似性

Belongs to the RFX family.
Contains 1 RFX-type winged-helix DNA-binding domain.

細胞内局在

Nucleus.

画像



Western blot - Anti-RFX2 antibody (ab79241)

Anti-RFX2 antibody (ab79241) at 1 µg/ml +
HeLa (Human epithelial carcinoma cell line)
Nuclear Lysate at 10 µg

Secondary

Goat polyclonal to Rabbit IgG - H&L - Pre-
Adsorbed (HRP) at 1/3000 dilution

Developed using the ECL technique.

Performed under reducing conditions.

Predicted band size: 80 kDa

Observed band size: 82 kDa

Additional bands at: 98 kDa. We are unsure
as to the identity of these extra bands.

Exposure time: 20 minutes

Please note: All products are "FOR RESEARCH USE ONLY AND ARE NOT INTENDED FOR DIAGNOSTIC OR THERAPEUTIC USE"

Our Abpromise to you: Quality guaranteed and expert technical support

- Replacement or refund for products not performing as stated on the datasheet
- Valid for 12 months from date of delivery
- Response to your inquiry within 24 hours
- We provide support in Chinese, English, French, German, Japanese and Spanish
- Extensive multi-media technical resources to help you
- We investigate all quality concerns to ensure our products perform to the highest standards

If the product does not perform as described on this datasheet, we will offer a refund or replacement. For full details of the Abpromise, please visit <https://www.abcam.co.jp/abpromise> or contact our technical team.

Terms and conditions

- Guarantee only valid for products bought direct from Abcam or one of our authorized distributors