

Product datasheet

Anti-RAB23 antibody - Carboxyterminal end ab63140

画像数 1

製品の概要

製品名	Anti-RAB23 antibody - Carboxyterminal end
製品の詳細	Rabbit polyclonal to RAB23 - Carboxyterminal end
由来種	Rabbit
アプリケーション	適用あり: WB, ELISA
種交差性	交差種: Human
免疫原	KLH conjugated synthetic peptide selected from the C-terminal region of human RAB23.
ポジティブ・コントロール	293 cell lysates transfected with the RAB23 gene.

製品の特性

製品の状態	Liquid
保存方法	Shipped at 4°C. Store at +4°C short term (1-2 weeks). Upon delivery aliquot. Store at -20°C or -80°C. Avoid freeze / thaw cycle.
バッファー	Preservative: 0.09% Sodium Azide Constituents: PBS
精製度	Protein A purified
ポリ/モノ	ポリクローナル
アイソタイプ	IgG

アプリケーション

Our [Abpromise guarantee](#) covers the use of **ab63140** in the following tested applications.

The application notes include recommended starting dilutions; optimal dilutions/concentrations should be determined by the end user.

アプリケーション	Abreviews	特記事項
WB		1/50 - 1/100. Detects a band of approximately 30 kDa (predicted molecular weight: 27 kDa).
ELISA		1/1000.

ターゲット情報

関連疾患

Defects in RAB23 are the cause of acrocephalopolysyndactyly type 2 (ACPS2) [MIM:201000]. A syndrome characterized by craniosynostosis, polysyndactyly, obesity, and cardiac defects.

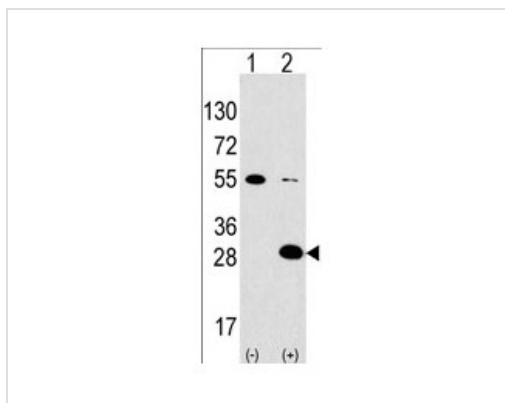
配列類似性

Belongs to the small GTPase superfamily. Rab family.

細胞内局在

Cell membrane.

画像



Western blot - Anti-RAB23 antibody -
Carboxyterminal end (ab63140)

All lanes : Anti-RAB23 antibody -

Carboxyterminal end (ab63140) at 1/50
dilution

Lane 1 : 293 cell lysates untransfected

Lane 2 : 293 cell lysates transiently
transfected with the RAB23 gene

Lysates/proteins at 2 µg per lane.

Predicted band size: 27 kDa

Observed band size: 30 kDa

Additional bands at: 55 kDa. We are unsure
as to the identity of these extra bands.

Please note: All products are "FOR RESEARCH USE ONLY AND ARE NOT INTENDED FOR DIAGNOSTIC OR THERAPEUTIC USE"

Our Abpromise to you: Quality guaranteed and expert technical support

- Replacement or refund for products not performing as stated on the datasheet
- Valid for 12 months from date of delivery
- Response to your inquiry within 24 hours
- We provide support in Chinese, English, French, German, Japanese and Spanish
- Extensive multi-media technical resources to help you
- We investigate all quality concerns to ensure our products perform to the highest standards

If the product does not perform as described on this datasheet, we will offer a refund or replacement. For full details of the Abpromise, please visit <https://www.abcam.co.jp/abpromise> or contact our technical team.

Terms and conditions

- Guarantee only valid for products bought direct from Abcam or one of our authorized distributors