

Product datasheet

Anti-Pyruvate Dehydrogenase E2 antibody ab66511

★★★★★ 2 Abreviews 2 References 画像数 4

製品の概要

製品名	Anti-Pyruvate Dehydrogenase E2 antibody
製品の詳細	Rabbit polyclonal to Pyruvate Dehydrogenase E2
由来種	Rabbit
アプリケーション	適用あり: ICC/IF, WB, ELISA, IHC-P, IHC-FoFr
種交差性	交差種: Mouse, Rat, Dog, Human 交差が予測される動物種: Rabbit, Horse, Guinea pig, Cow, Cat, Pig, Zebrafish
免疫原	Synthetic peptide: LLQLLGSPGR RYSLPPHQK VPLPSLSPTM QAGTIARWEK KEGDKINEGD, corresponding to a region within N terminal amino acids 74-123 of Human Pyruvate Dehydrogenase E2 Run BLAST with ExPASy Run BLAST with NCBI
ポジティブ・コントロール	WB: Jurkat cell lysate IHC-P: Human kidney tissue

製品の特性

製品の状態	Liquid
保存方法	Shipped at 4°C. Upon delivery aliquot and store at -20°C. Avoid freeze / thaw cycles.
バッファー	Preservative: 0.09% Sodium azide Constituents: 2% Sucrose, PBS
精製度	Protein A purified
ポリ/モノ	ポリクローナル
アイソタイプ	IgG

アプリケーション

Our [Abpromise guarantee](#) covers the use of **ab66511** in the following tested applications.

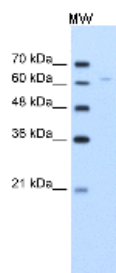
The application notes include recommended starting dilutions; optimal dilutions/concentrations should be determined by the end user.

アプリ ケーション	Abreviews	特記事項
ICC/IF		Use at an assay dependent concentration.
WB	★★★★★	Use a concentration of 5 µg/ml. Detects a band of approximately 63 kDa (predicted molecular weight: 66 kDa). Good results were obtained when blocked with 5% non-fat dry milk in 0.05% PBS-T.
ELISA		Use at an assay dependent concentration.
IHC-P		Use a concentration of 4 - 8 µg/ml.
IHC- FoFr	★★★★☆	Use at an assay dependent concentration.

ターゲット情報

機能	The pyruvate dehydrogenase complex catalyzes the overall conversion of pyruvate to acetyl-CoA and CO ₂ . It contains multiple copies of three enzymatic components: pyruvate dehydrogenase (E1), dihydrolipoamide acetyltransferase (E2) and lipoamide dehydrogenase (E3).
関連疾患	Note=Primary biliary cirrhosis is a chronic, progressive cholestatic liver disease characterized by the presence of antimitochondrial autoantibodies in patients' serum. It manifests with inflammatory obliteration of intra-hepatic bile duct, leading to liver cell damage and cirrhosis. Patients with primary biliary cirrhosis show autoantibodies against the E2 component of pyruvate dehydrogenase complex. Defects in DLAT are the cause of pyruvate dehydrogenase E2 deficiency (PDHE2 deficiency) [MIM:245348]; also known as lactic acidemia due to defect of E2 lipoyl transacetylase of the pyruvate dehydrogenase complex. Pyruvate dehydrogenase (PDH) deficiency is a major cause of primary lactic acidosis and neurological dysfunction in infancy and early childhood. In this form of PDH deficiency episodic dystonia is the major neurological manifestation, with other more common features of pyruvate dehydrogenase deficiency, such as hypotonia and ataxia, being less prominent.
配列類似性	Belongs to the 2-oxoacid dehydrogenase family. Contains 2 lipoyl-binding domains.
細胞内局在	Mitochondrion matrix.

画像



Western blot - Anti-Pyruvate Dehydrogenase E2 antibody (ab66511)

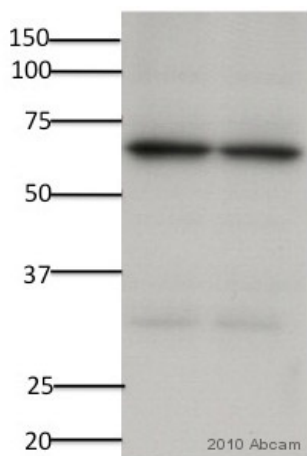
Anti-Pyruvate Dehydrogenase E2 antibody (ab66511) at 5 µg/ml + Jurkat cell lysate at 10 µg

Secondary

HRP conjugated anti-Rabbit IgG at 1/50000 dilution

Predicted band size: 66 kDa

Observed band size: 63 kDa



Western blot - Anti-Pyruvate Dehydrogenase E2 antibody (ab66511)

This image is courtesy of an anonymous Abreview

All lanes : Anti-Pyruvate Dehydrogenase E2 antibody (ab66511) at 1/2500 dilution (For 16 hours in blocking solution.)

All lanes : Mouse adipocyte whole cell lysate

Lysates/proteins at 10 µg per lane.

Secondary

All lanes : Goat Anti-Rabbit IgG H&L (HRP) (ab6721) at 1/10000 dilution

Developed using the ECL technique.

Performed under reducing conditions.

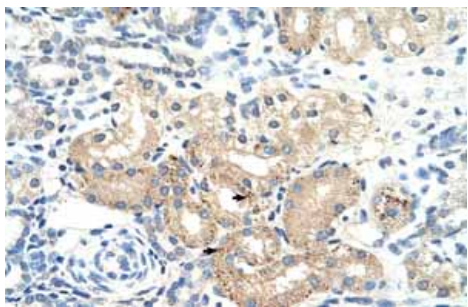
Predicted band size: 66 kDa

Observed band size: 63 kDa

Additional bands at: 30 kDa. We are unsure as to the identity of these extra bands.

Exposure time: 5 seconds

Blocking Step: 5% Milk for 1 hour at 25°C.



Immunohistochemistry (Formalin/PFA-fixed paraffin-embedded sections) - Anti-Pyruvate Dehydrogenase E2 antibody (ab66511)

Immunohistochemistry (Formalin/PFA-fixed paraffin-embedded sections) analysis of human kidney tissue labelling Pyruvate Dehydrogenase E2 with ab66511 at 4-8µg/ml. Arrows indicate positively labelled epithelial cells of the renal tubule. Magnification: 400X.



Western blot - Anti-Pyruvate Dehydrogenase E2 antibody (ab66511)

Anti-Pyruvate Dehydrogenase E2 antibody (ab66511) at 1/200 dilution + Huh7 cell lysate at 50 µg

Predicted band size: 66 kDa

WB Suggested Anti-TSPAN3 antibody ([ab81018](#)) Titration: 1 µg/ml Positive Control: sea urchin embryo

Please note: All products are "FOR RESEARCH USE ONLY AND ARE NOT INTENDED FOR DIAGNOSTIC OR THERAPEUTIC USE"

Our Abpromise to you: Quality guaranteed and expert technical support

- Replacement or refund for products not performing as stated on the datasheet
- Valid for 12 months from date of delivery
- Response to your inquiry within 24 hours
- We provide support in Chinese, English, French, German, Japanese and Spanish
- Extensive multi-media technical resources to help you
- We investigate all quality concerns to ensure our products perform to the highest standards

If the product does not perform as described on this datasheet, we will offer a refund or replacement. For full details of the Abpromise, please visit <https://www.abcam.co.jp/abpromise> or contact our technical team.

Terms and conditions

- Guarantee only valid for products bought direct from Abcam or one of our authorized distributors