

Product datasheet

Anti-Pumilio 1 antibody [EPR3795] ab92545

リコンビナント RabMAb[®]

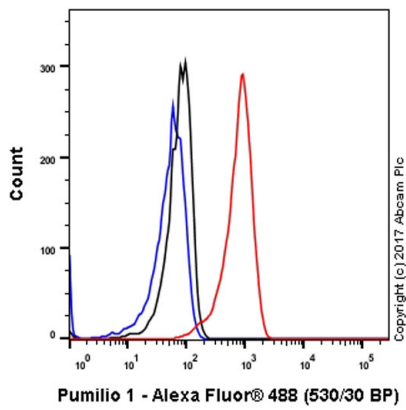
1 Abreviews 1 References 画像数 9

製品の概要

製品名	Anti-Pumilio 1 antibody [EPR3795]
製品の詳細	Rabbit monoclonal [EPR3795] to Pumilio 1
由来種	Rabbit
特異性	This antibody is predicted to not cross react with Pumilio 2.
アプリケーション	適用あり: ICC/IF, WB, Flow Cyt, IHC-P 適用なし: IP
種交差性	交差種: Mouse, Rat, Human
免疫原	Synthetic peptide. within Human Pumilio 1 aa 150-250. The exact sequence is proprietary. Database link: Q14671
ポジティブ・コントロール	WB: HeLa, Mouse cerebellum, rat brain and 293T cell lysates IHC-P: Human fetal kidney tissue, human thyroid carcinoma. ICC/IF: HeLa cells
特記事項	Rat: We have preliminary internal testing data to indicate this antibody may not react with these species. Please contact us for more information. Our RabMAb [®] technology is a patented hybridoma-based technology for making rabbit monoclonal antibodies. For details on our patents, please refer to RabMAb[®] patents We are constantly working hard to ensure we provide our customers with best in class antibodies. As a result of this work we are pleased to now offer this antibody in purified format. We are in the process of updating our datasheets. The purified format is designated 'PUR' on our product labels. If you have any questions regarding this update, please contact our Scientific Support team. This product is a recombinant rabbit monoclonal antibody.

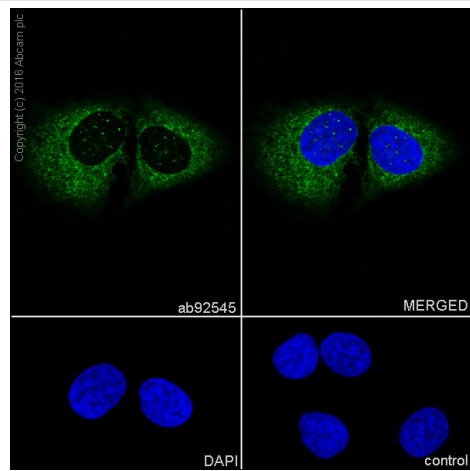
製品の特性

製品の状態	Liquid
保存方法	Shipped at 4°C. Store at +4°C short term (1-2 weeks). Upon delivery aliquot. Store at -20°C. Avoid freeze / thaw cycle.
バッファー	pH: 7.20 Preservative: 0.01% Sodium azide Constituents: 59% PBS, 40% Glycerol, 0.05% BSA



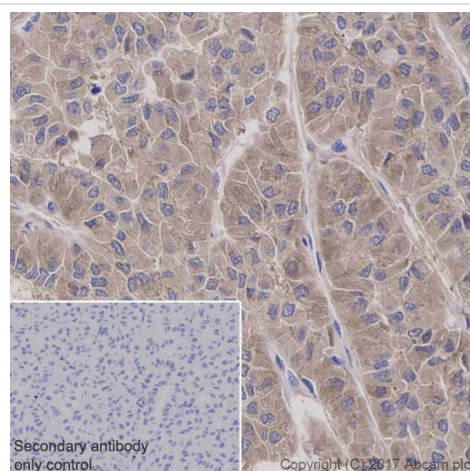
Flow Cytometry - Anti-Pumilio 1 antibody [EPR3795] (ab92545)

Flow Cytometry analysis of HEK-293 (Human embryonic kidney epithelial cell) cells labeling Pumilio 1 with purified ab92545 at 1:20 dilution (10 µg/ml) (red). Cells were fixed with 4% Paraformaldehyde and permeabilized with 90% Methanol. A Goat anti rabbit IgG (Alexa Fluor® 488) secondary antibody was used at 1:2000 dilution. Isotype control - Rabbit monoclonal IgG (Black). Unlabeled control - Cell without incubation with primary antibody and secondary antibody (Blue).



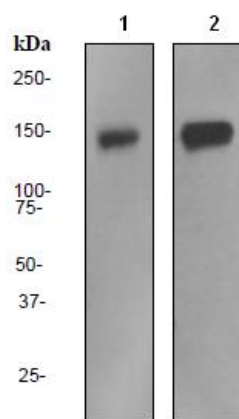
Immunocytochemistry/ Immunofluorescence - Anti-Pumilio 1 antibody [EPR3795] (ab92545)

Immunocytochemistry/ Immunofluorescence analysis of HeLa (Human cervix adenocarcinoma epithelial cell) cells labeling Pumilio 1 with purified ab92545 at 1:500 dilution (0.2 µg/ml). Cells were fixed in 100% Methanol. ab150077 Goat anti rabbit IgG(Alexa Fluor® 488) was used as the secondary antibody at 1:1000 dilution. DAPI nuclear counterstain. PBS instead of the primary antibody was used as the secondary antibody only control.



Immunohistochemistry (Formalin/PFA-fixed paraffin-embedded sections) - Anti-Pumilio 1 antibody [EPR3795] (ab92545)

Immunohistochemistry (Formalin/PFA-fixed paraffin-embedded sections) analysis of human thyroid carcinoma tissue sections labeling Pumilio 1 with Purified ab92545 at 1:100 dilution (1.18 µg/ml). Heat mediated antigen retrieval was performed using ab93684 (Tris/EDTA buffer, pH 9.0). Tissue was counterstained with Hematoxylin. ImmunoHistoProbe one step HRP Polymer (ready to use) secondary antibody was used at 1:0 dilution. PBS instead of the primary antibody was used as the negative control.



Western blot - Anti-Pumilio 1 antibody [EPR3795] (ab92545)

All lanes : Anti-Pumilio 1 antibody [EPR3795] (ab92545) at 1/1000 dilution (unpurified)

Lane 1 : HeLa cell lysate

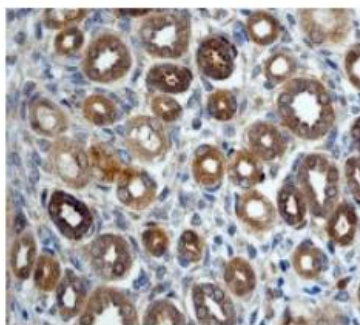
Lane 2 : 293T cell lysates

Lysates/proteins at 10 µg per lane.

Secondary

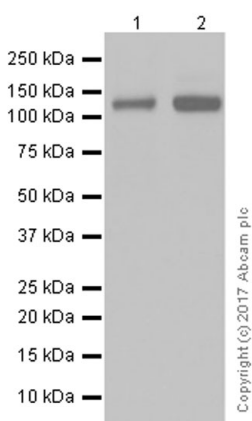
All lanes : Standard HRP labelled goat anti-rabbit at 1/2000 dilution

Predicted band size: 126 kDa



Immunohistochemistry (Formalin/PFA-fixed paraffin-embedded sections) - Anti-Pumilio 1 antibody [EPR3795] (ab92545)

Immunohistochemical analysis of Pumilio 1 in paraffin embedded Human fetal kidney tissue using an unpurified ab92545 at a 1/100 dilution.



Western blot - Anti-Pumilio 1 antibody [EPR3795] (ab92545)

All lanes : Anti-Pumilio 1 antibody [EPR3795] (ab92545) at 1/1000 dilution (purified)

Lane 1 : Mouse cerebellum lysates

Lane 2 : Rat brain lysates

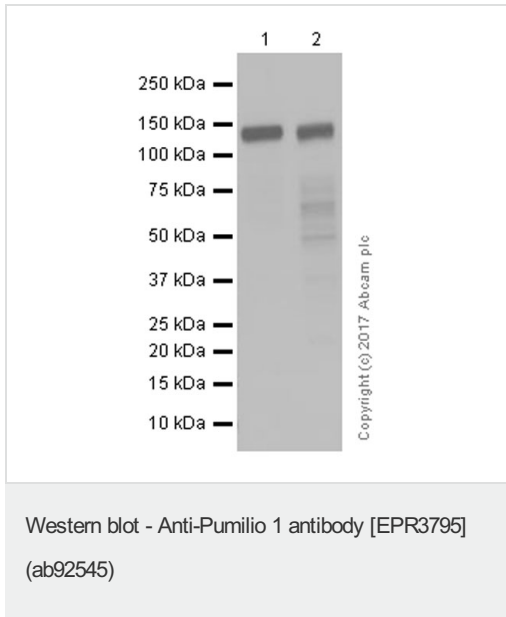
Lysates/proteins at 20 µg per lane.

Secondary

All lanes : Goat Anti-Rabbit IgG H&L (HRP) (ab97051) at 1/20000 dilution

Predicted band size: 126 kDa

Blocking and diluting buffer: 5% NFDm/TBST



All lanes : Anti-Pumilio 1 antibody [EPR3795] (ab92545) at 1/5000 dilution (purified)

Lane 1 : HeLa (Human cervix adenocarcinoma epithelial cell) whole cell lysates

Lane 2 : HEK-293 (Human embryonic kidney epithelial cell) whole cell lysates

Lysates/proteins at 20 µg per lane.

Secondary

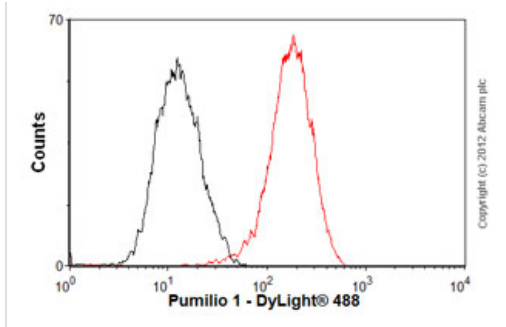
All lanes : Goat Anti-Rabbit IgG H&L (HRP) (ab97051) at 1/20000 dilution

Predicted band size: 126 kDa

Blocking and diluting buffer: 5% NFDm/TBST



Immunofluorescent staining of Pumilio 1 in HeLa cells using an unpurified ab92545 at a 1/100 dilution.



Flow Cytometry - Anti-Pumilio 1 antibody [EPR3795] (ab92545)

Overlay histogram showing HEK293 cells stained with an unpurified ab92545 (red line). The cells were fixed with 4% paraformaldehyde (10 min) and then permeabilized with 0.1% PBS-Tween for 20 min. The cells were then incubated in 1x PBS / 10% normal goat serum / 0.3M glycine to block non-specific protein-protein interactions followed by the antibody (ab92545, 1/100 dilution) for 30 min at 22°C. The secondary antibody used was DyLight® 488 goat anti-rabbit IgG (H+L) (ab96899) at 1/500 dilution for 30 min at 22°C. Isotype control antibody (black line) was rabbit IgG (monoclonal) (1 µg/1x10⁶ cells) used under the same conditions. Acquisition of >5,000 events was performed. This antibody gave a positive signal in HEK293 cells fixed with 80% methanol (5 min)/permeabilized with 0.1% PBS-Tween for 20 min used under the same conditions.

Please note: All products are "FOR RESEARCH USE ONLY AND ARE NOT INTENDED FOR DIAGNOSTIC OR THERAPEUTIC USE"

Our Abpromise to you: Quality guaranteed and expert technical support

- Replacement or refund for products not performing as stated on the datasheet
- Valid for 12 months from date of delivery
- Response to your inquiry within 24 hours
- We provide support in Chinese, English, French, German, Japanese and Spanish
- Extensive multi-media technical resources to help you
- We investigate all quality concerns to ensure our products perform to the highest standards

If the product does not perform as described on this datasheet, we will offer a refund or replacement. For full details of the Abpromise, please visit <https://www.abcam.co.jp/abpromise> or contact our technical team.

Terms and conditions

- Guarantee only valid for products bought direct from Abcam or one of our authorized distributors