

Product datasheet

Anti-Protective protein/Cathepsin A (PPCA) antibody ab111752

1 References [画像数 3](#)

製品の概要

製品名	Anti-Protective protein/Cathepsin A (PPCA) antibody
製品の詳細	Rabbit polyclonal to Protective protein/Cathepsin A (PPCA)
由来種	Rabbit
アプリケーション	適用あり: WB, IHC-P
種交差性	交差種: Mouse, Human
免疫原	Synthetic peptide within Human Protective protein/Cathepsin A (PPCA) aa 25-53 (N terminal) conjugated to Keyhole Limpet Haemocyanin (KLH). The exact sequence is proprietary. Database link: NP_001161066.1
ポジティブ・コントロール	HepG2 cells or mouse bladder tissue lysates; Human hepatocarcinoma tissue.

製品の特性

製品の状態	Liquid
保存方法	Shipped at 4°C. Store at 4°C (up to 6 months). Store at -20°C long term.
バッファー	Preservative: 0.09% Sodium azide Constituent: PBS
精製度	Immunogen affinity purified
特記事項 (精製)	This antibody is purified through a protein A column, followed by peptide affinity purification.
ポリ/モノ	ポリクローナル
アイソタイプ	IgG

アプリケーション

Our [Abpromise guarantee](#) covers the use of **ab111752** in the following tested applications.

The application notes include recommended starting dilutions; optimal dilutions/concentrations should be determined by the end user.

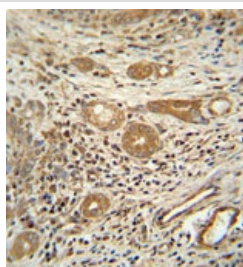
アプリケーション	Abreviews	特記事項
WB		1/100 - 1/500. Predicted molecular weight: 46 kDa.

アプリケーション	Abreviews	特記事項
IHC-P		1/50 - 1/100. Perform heat mediated antigen retrieval with citrate buffer pH 6 before commencing with IHC staining protocol.

ターゲット情報

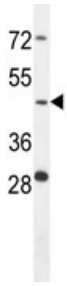
機能	Protective protein appears to be essential for both the activity of beta-galactosidase and neuraminidase, it associates with these enzymes and exerts a protective function necessary for their stability and activity. This protein is also a carboxypeptidase and can deamidate tachykinins.
関連疾患	Defects in CTSA are the cause of galactosialidosis (GSL) [MIM:256540]. A lysosomal storage disease associated with a combined deficiency of beta-galactosidase and neuraminidase, secondary to a defect in cathepsin A. All patients have clinical manifestations typical of a lysosomal disorder, such as coarse facies, cherry red spots, vertebral changes, foam cells in the bone marrow, and vacuolated lymphocytes. Three phenotypic subtypes are recognized. The early infantile form is associated with fetal hydrops, edema, ascites, visceromegaly, skeletal dysplasia, and early death. The late infantile type is characterized by hepatosplenomegaly, growth retardation, cardiac involvement, and a normal or mildly affected mental state. The juvenile/adult form is characterized by myoclonus, ataxia, angiokeratoma, mental retardation, neurologic deterioration, absence of visceromegaly, and long survival.
配列類似性	Belongs to the peptidase S10 family.
細胞内局在	Lysosome.

画像



Immunohistochemistry analysis of Protective protein/Cathepsin A (PPCA) expression in formalin fixed and paraffin embedded Human hepatocarcinoma tissue using 1/50 ab111752 followed by a peroxidase conjugated secondary antibody and DAB staining.

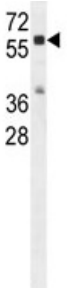
Immunohistochemistry (Formalin/PFA-fixed paraffin-embedded sections) - Anti-Protective protein/Cathepsin A (PPCA) antibody (ab111752)



Western blot - Anti-Protective protein/Cathepsin A (PPCA) antibody (ab111752)

Anti-Protective protein/Cathepsin A (PPCA) antibody (ab111752)
at 1/100 dilution + HepG2 cell line lysates at 35 µg

Predicted band size: 46 kDa



Western blot - Anti-Protective protein/Cathepsin A (PPCA) antibody (ab111752)

Anti-Protective protein/Cathepsin A (PPCA) antibody (ab111752)
at 1/100 dilution + mouse bladder tissue lysates at 35 µg

Predicted band size: 46 kDa

Please note: All products are "FOR RESEARCH USE ONLY AND ARE NOT INTENDED FOR DIAGNOSTIC OR THERAPEUTIC USE"

Our Abpromise to you: Quality guaranteed and expert technical support

- Replacement or refund for products not performing as stated on the datasheet
- Valid for 12 months from date of delivery
- Response to your inquiry within 24 hours
- We provide support in Chinese, English, French, German, Japanese and Spanish
- Extensive multi-media technical resources to help you
- We investigate all quality concerns to ensure our products perform to the highest standards

If the product does not perform as described on this datasheet, we will offer a refund or replacement. For full details of the Abpromise, please visit <https://www.abcam.co.jp/abpromise> or contact our technical team.

Terms and conditions

- Guarantee only valid for products bought direct from Abcam or one of our authorized distributors