

Product datasheet

Anti-Proteasome subunit alpha type 6 antibody ab97562

画像数 2

製品の概要

| | |
|--------------|--|
| 製品名 | Anti-Proteasome subunit alpha type 6 antibody |
| 製品の詳細 | Rabbit polyclonal to Proteasome subunit alpha type 6 |
| 由来種 | Rabbit |
| アプリケーション | 適用あり: WB, ICC/IF |
| 種交差性 | 交差種: Human 交差が予測される動物種: Mouse, Rat, Pig, Zebrafish |
| 免疫原 | Recombinant fragment corresponding to Human Proteasome subunit alpha type 6 aa 1-244. Database link: P60900 |
| ポジティブ・コントロール | WB: 293T, A431, H1299, HeLaS3, HepG2 and Raji cell lysates IF: HeLa cells |

法規制情報

医薬用外毒物

製品の特性

| | |
|--------|---|
| 製品の状態 | Liquid |
| 保存方法 | Shipped at 4°C. Upon delivery aliquot and store at -20°C or -80°C. Avoid repeated freeze / thaw cycles. |
| バッファー | Preservative: 0.01% Thimerosal (merthiolate) Constituents: 10% Glycerol, 0.1M Tris, 0.1M Glycine, pH 7.0 |
| 精製度 | Immunogen affinity purified |
| ポリ/モノ | ポリクローナル |
| アイソタイプ | IgG |

アプリケーション

Our [Abpromise guarantee](#) covers the use of **ab97562** in the following tested applications.

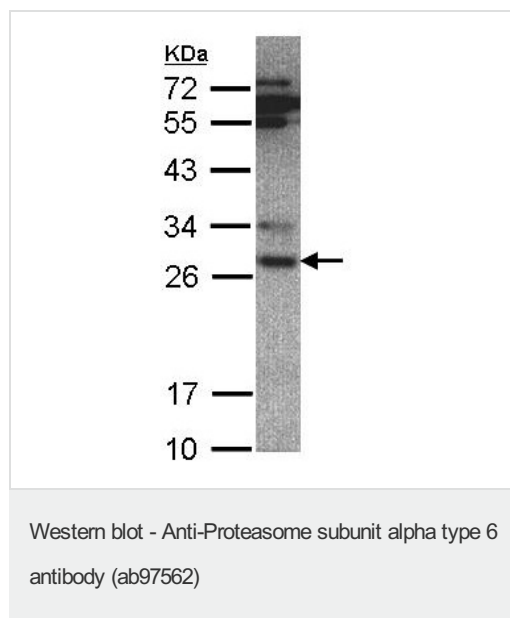
The application notes include recommended starting dilutions; optimal dilutions/concentrations should be determined by the end user.

| アプリケーション | Abreviews | 特記事項 |
|----------|-----------|---|
| WB | | 1/500 - 1/3000. Predicted molecular weight: 27 kDa. |
| ICC/IF | | 1/100 - 1/200. |

ターゲット情報

| | |
|-------|--|
| 機能 | The proteasome is a multicatalytic proteinase complex which is characterized by its ability to cleave peptides with Arg, Phe, Tyr, Leu, and Glu adjacent to the leaving group at neutral or slightly basic pH. The proteasome has an ATP-dependent proteolytic activity. |
| 配列類似性 | Belongs to the peptidase T1A family. |
| 細胞内局在 | Cytoplasm. Nucleus. |

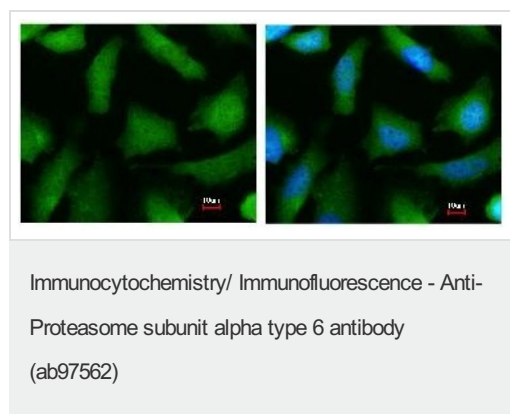
画像



Anti-Proteasome subunit alpha type 6 antibody (ab97562) at 1/500 dilution + HepG2 cell lysate at 30 µg

Predicted band size: 27 kDa

7.5% SDS PAGE



ab97562, at a 1/200 dilution, staining Proteasome subunit alpha type 6 in paraformaldehyde-fixed HeLa cells by Immunofluorescence analysis. Right image is merged to a DNA probe.

Please note: All products are "FOR RESEARCH USE ONLY AND ARE NOT INTENDED FOR DIAGNOSTIC OR THERAPEUTIC USE"

Our Abpromise to you: Quality guaranteed and expert technical support

- Replacement or refund for products not performing as stated on the datasheet
- Valid for 12 months from date of delivery
- Response to your inquiry within 24 hours

- We provide support in Chinese, English, French, German, Japanese and Spanish
- Extensive multi-media technical resources to help you
- We investigate all quality concerns to ensure our products perform to the highest standards

If the product does not perform as described on this datasheet, we will offer a refund or replacement. For full details of the Abpromise, please visit <https://www.abcam.co.jp/abpromise> or contact our technical team.

Terms and conditions

- Guarantee only valid for products bought direct from Abcam or one of our authorized distributors