


Product datasheet

Anti-Prostaglandin E Receptor EP2 antibody ab124419

2 References [画像数 2](#)

製品の概要

製品名	Anti-Prostaglandin E Receptor EP2 antibody
製品の詳細	Rabbit polyclonal to Prostaglandin E Receptor EP2
由来種	Rabbit
アプリケーション	適用あり: WB, ELISA, IHC-P
種交差性	交差種: Mouse, Human 交差が予測される動物種: Rat 
免疫原	Synthetic peptide corresponding to a region from the C-terminus of Human Prostaglandin E Receptor EP2.
ポジティブ・コントロール	Mouse liver cell extract, Human Uterus, Myometrium tissue

製品の特性

製品の状態	Liquid
保存方法	Shipped at 4°C. Store at -20°C. Stable for 12 months at -20°C.
バッファー	pH: 7.40 Preservative: 0.02% Sodium azide Constituents: 49% PBS, 50% Glycerol, 0.88% Sodium chloride Note: (without Mg ²⁺ , Ca ²⁺)
精製度	Immunogen affinity purified
ポリ/モノ	ポリクローナル
アイソタイプ	IgG

アプリケーション

Our [Abpromise guarantee](#) covers the use of **ab124419** in the following tested applications.

The application notes include recommended starting dilutions; optimal dilutions/concentrations should be determined by the end user.

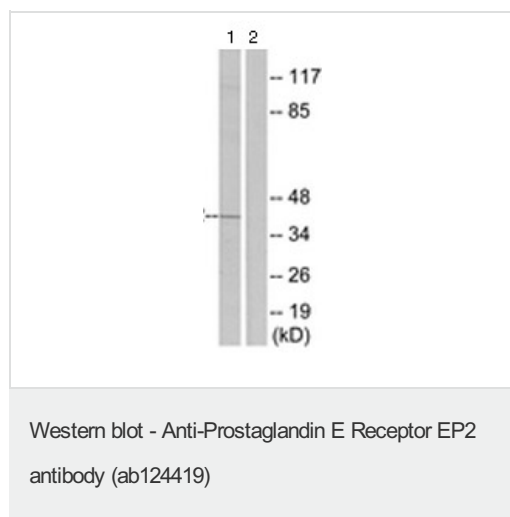
アプリケーション	Abreviews	特記事項
WB		1/500 - 1/1000. Predicted molecular weight: 40 kDa.

アプリケーション	Abreviews	特記事項
ELISA		1/1000.
IHC-P		Use a concentration of 5 µg/ml.

ターゲット情報

機能	Receptor for prostaglandin E2 (PGE2). The activity of this receptor is mediated by G(s) proteins that stimulate adenylate cyclase. The subsequent raise in intracellular cAMP is responsible for the relaxing effect of this receptor on smooth muscle.
組織特異性	Placenta and lung.
配列類似性	Belongs to the G-protein coupled receptor 1 family.
細胞内局在	Cell membrane.

画像

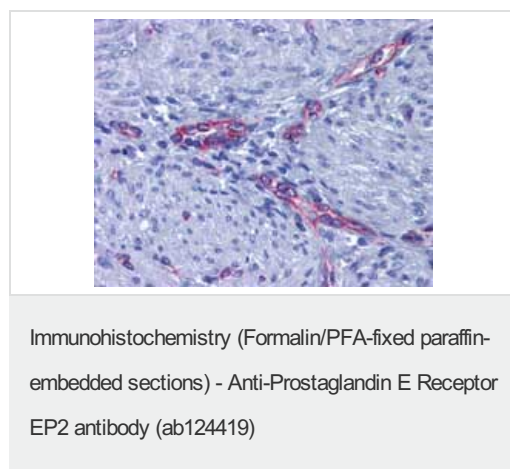


All lanes : Anti-Prostaglandin E Receptor EP2 antibody (ab124419) at 1/500 dilution

Lane 1 : Mouse liver cell extract

Lane 2 : Mouse liver cell extract with synthesized peptide

Predicted band size: 40 kDa



Staining of Prostaglandin E Receptor EP2 in Paraffin-embedded Human Uterus, Myometrium tissue by Immunohistochemistry using ab124419 at a concentration of 5 µg/ml.

Please note: All products are "FOR RESEARCH USE ONLY AND ARE NOT INTENDED FOR DIAGNOSTIC OR THERAPEUTIC USE"

Our Abpromise to you: Quality guaranteed and expert technical support

- Replacement or refund for products not performing as stated on the datasheet
- Valid for 12 months from date of delivery
- Response to your inquiry within 24 hours

- We provide support in Chinese, English, French, German, Japanese and Spanish
- Extensive multi-media technical resources to help you
- We investigate all quality concerns to ensure our products perform to the highest standards

If the product does not perform as described on this datasheet, we will offer a refund or replacement. For full details of the Abpromise, please visit <https://www.abcam.co.jp/abpromise> or contact our technical team.

Terms and conditions

- Guarantee only valid for products bought direct from Abcam or one of our authorized distributors