

Product datasheet

Anti-Prominin 2 antibody ab118535

画像数 2

製品の概要

製品名	Anti-Prominin 2 antibody
製品の詳細	Rabbit polyclonal to Prominin 2
由来種	Rabbit
アプリケーション	適用あり: IHC-P
種交差性	交差種: Human
免疫原	Synthetic peptide conjugated to KLH, from an internal domain of Human Prominin 2 (NP_653308.2).
ポジティブ・コントロール	Human Lung (respiratory Epithelium) and Uterus tissues.

製品の特性

製品の状態	Liquid
保存方法	Shipped at 4°C. Store at +4°C short term (1-2 weeks). Upon delivery aliquot. Store at -20°C long term.
バッファー	Preservative: 0.1% Sodium azide Constituent: 99% PBS
精製度	Protein A purified
ポリ/モノ	ポリクローナル
アイソタイプ	IgG

アプリケーション

Our [Abpromise guarantee](#) covers the use of **ab118535** in the following tested applications.

The application notes include recommended starting dilutions; optimal dilutions/concentrations should be determined by the end user.

アプリケーション	Abreviews	特記事項
IHC-P		Use a concentration of 15 - 20 µg/ml.

ターゲット情報

### 組織特異性

Present in saliva within small membrane particles (at protein level). Expressed in kidney, prostate, trachea, esophagus, salivary gland, thyroid gland, mammary gland adrenal gland, placenta, stomach, spinal cord and liver. In submucosal tumor, expressed in spindle-shaped or stellate stromal cells. Expressed in prostate cancer cell lines.

### 配列類似性

Belongs to the prominin family.

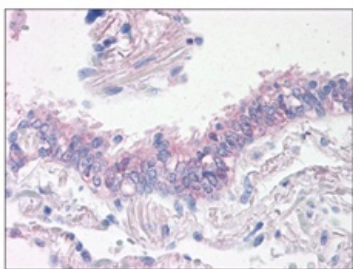
### 翻訳後修飾

Glycosylated.

### 細胞内局在

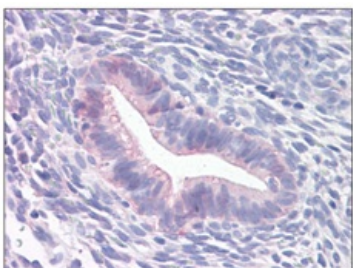
Apical cell membrane. Basolateral cell membrane. Cell projection > microvillus membrane. Cell projection > cilium membrane. Colocalizes with PROM1. Associates with membrane in a cholesterol-dependent manner. Localizes to the apical and basolateral membranes of epithelial cells.

## 画像



Immunohistochemical analysis of Prominin 2 expression in Formalin-Fixed, Paraffin-Embedded Human Lung, Respiratory Epithelium, tissue using 20 µg/ml ab118535.

Immunohistochemistry (Formalin/PFA-fixed paraffin-embedded sections) - Anti-Prominin 2 antibody (ab118535)



Immunohistochemical analysis of Prominin 2 expression in Formalin-Fixed, Paraffin-Embedded Human Uterus tissue using 20 µg/ml ab118535.

Immunohistochemistry (Formalin/PFA-fixed paraffin-embedded sections) - Anti-Prominin 2 antibody (ab118535)

**Please note:** All products are "FOR RESEARCH USE ONLY AND ARE NOT INTENDED FOR DIAGNOSTIC OR THERAPEUTIC USE"

## Our Abpromise to you: Quality guaranteed and expert technical support

- Replacement or refund for products not performing as stated on the datasheet
- Valid for 12 months from date of delivery

- Response to your inquiry within 24 hours
- We provide support in Chinese, English, French, German, Japanese and Spanish
- Extensive multi-media technical resources to help you
- We investigate all quality concerns to ensure our products perform to the highest standards

If the product does not perform as described on this datasheet, we will offer a refund or replacement. For full details of the Abpromise, please visit <https://www.abcam.co.jp/abpromise> or contact our technical team.

### **Terms and conditions**

---

- Guarantee only valid for products bought direct from Abcam or one of our authorized distributors