

## Product datasheet

# Anti-Pin1 (phospho S16) antibody [EP1480Y] ab62378

リコンビナント RabMAb®

★★★★☆ 1 Abreviews [画像数 1](#)

### 製品の概要

<b>製品名</b>	Anti-Pin1 (phospho S16) antibody [EP1480Y]
<b>製品の詳細</b>	Rabbit monoclonal [EP1480Y] to Pin1 (phospho S16)
<b>由来種</b>	Rabbit
<b>特異性</b>	This antibody detects Pin1 phosphorylated at Serine 16.
<b>アプリケーション</b>	<b>適用あり:</b> WB, ICC <b>適用なし:</b> Flow Cyt or IP
<b>種交差性</b>	<b>交差種:</b> Human
<b>免疫原</b>	Phospho specific peptide corresponding to residues surround Serine 16 of human Pin1.
<b>ポジティブ・コントロール</b>	HeLa cell lysate.
<b>特記事項</b>	Mouse, Rat: We have preliminary internal testing data to indicate this antibody may not react with these species. Please contact us for more information.  Our RabMAb® technology is a patented hybridoma-based technology for making rabbit monoclonal antibodies. For details on our patents, please refer to <a href="#">RabMAb® patents</a>  This product is a recombinant rabbit monoclonal antibody.

### 製品の特性

<b>製品の状態</b>	Liquid
<b>保存方法</b>	Shipped at 4°C. Upon delivery aliquot and store at -20°C. Avoid freeze / thaw cycles.
<b>バッファー</b>	pH: 7.20 Preservative: 0.01% Sodium azide Constituents: 9% PBS, 40% Glycerol, 0.05% BSA, 50% Tissue culture supernatant
<b>精製度</b>	Tissue culture supernatant
<b>ポリ/モノ</b>	モノクローナル
<b>クローン名</b>	EP1480Y
<b>アイソタイプ</b>	IgG

## アプリケーション

---

Our [Abpromise guarantee](#) covers the use of **ab62378** in the following tested applications.

The application notes include recommended starting dilutions; optimal dilutions/concentrations should be determined by the end user.

アプリケーション	Abreviews	特記事項
WB		1/500. Detects a band of approximately 18 kDa (predicted molecular weight: 18 kDa).
ICC		1/100 - 1/250.
追加情報		Is unsuitable for Flow Cyt or IP.

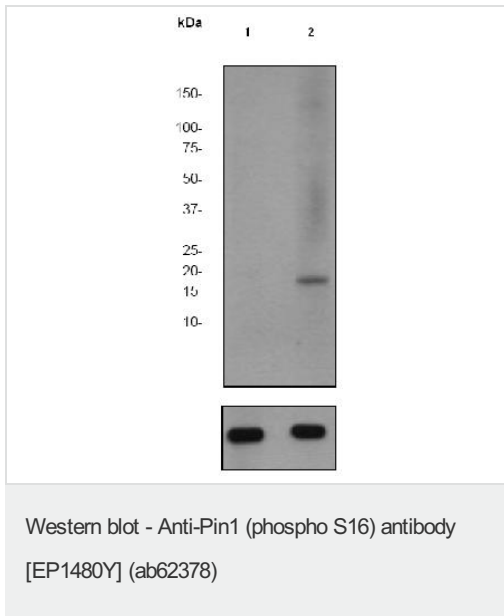
## ターゲット情報

---

機能	Essential PPlase that regulates mitosis presumably by interacting with NIMA and attenuating its mitosis-promoting activity. Displays a preference for an acidic residue N-terminal to the isomerized proline bond. Catalyzing pSer/Thr-Pro cis/trans isomerizations.
配列類似性	Contains 1 PpiC domain. Contains 1 WW domain.
ドメイン	The WW domain is required for the interaction with STIL and KIF20B.
翻訳後修飾	Phosphorylated upon DNA damage, probably by ATM or ATR.
細胞内局在	Nucleus.

## 画像

---



**All lanes :** Anti-Pin1 (phospho S16) antibody  
[EP1480Y] (ab62378) at 1/500 dilution

**Lane 1 :** HeLa cell lysate (untreated)

**Lane 2 :** HeLa cell lysate (treated with FBS +  
Calyculin A)

Lysates/proteins at 10 µg per lane.

#### Secondary

**All lanes :** Goat anti-Rabbit HRP conjugated  
at 1/2000 dilution

**Predicted band size:** 18 kDa

**Observed band size:** 18 kDa

The bottom image shows beta Tubulin.

**Please note:** All products are "FOR RESEARCH USE ONLY AND ARE NOT INTENDED FOR DIAGNOSTIC OR THERAPEUTIC USE"

#### Our Abpromise to you: Quality guaranteed and expert technical support

- Replacement or refund for products not performing as stated on the datasheet
- Valid for 12 months from date of delivery
- Response to your inquiry within 24 hours
- We provide support in Chinese, English, French, German, Japanese and Spanish
- Extensive multi-media technical resources to help you
- We investigate all quality concerns to ensure our products perform to the highest standards

If the product does not perform as described on this datasheet, we will offer a refund or replacement. For full details of the Abpromise, please visit <https://www.abcam.co.jp/abpromise> or contact our technical team.

#### Terms and conditions

- Guarantee only valid for products bought direct from Abcam or one of our authorized distributors