


Product datasheet

Anti-Phospholipase c eta 1 antibody ab97750

画像数 1

製品の概要

製品名	Anti-Phospholipase c eta 1 antibody
製品の詳細	Rabbit polyclonal to Phospholipase c eta 1
由来種	Rabbit
アプリケーション	適用あり: WB
種交差性	交差種: Human 交差が予測される動物種: Mouse 
免疫原	Recombinant protein fragment corresponding to a region within amino acids 530-823 of Human Phospholipase c eta 1 (NP_055811) Run BLAST with ExPASy Run BLAST with NCBI
ポジティブ・コントロール	293T, A431, H1299, HeLaS3, HepG2, MOLT4 and Raji cells

法規制情報

医薬用外毒物

製品の特性

製品の状態	Liquid
保存方法	Shipped at 4°C. Upon delivery aliquot. Store at -20°C or -80°C. Avoid freeze / thaw cycle.
バッファー	Preservative: 0.01% Thimerosal (merthiolate) Constituents: 10% Glycerol, 0.1M Tris, 0.1M Glycine, pH 7.0
精製度	Immunogen affinity purified
ポリ/モノ	ポリクローナル
アイソタイプ	IgG

アプリケーション

Our [Abpromise guarantee](#) covers the use of **ab97750** in the following tested applications.

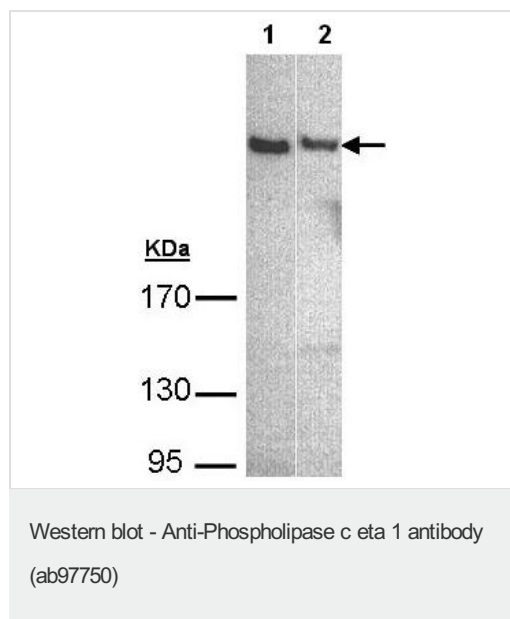
The application notes include recommended starting dilutions; optimal dilutions/concentrations should be determined by the end user.

アプリケーション	Abreviews	特記事項
WB		1/500 - 1/3000. Predicted molecular weight: 185 kDa.

ターゲット情報

機能	The production of the second messenger molecules diacylglycerol (DAG) and inositol 1,4,5-trisphosphate (IP3) is mediated by calcium-activated phosphatidylinositol-specific phospholipase C enzymes.
組織特異性	Expressed in brain and to a lower extent in lung. In brain, it is found in cerebrum, cerebellum and spinal cord.
配列類似性	Contains 1 C2 domain. Contains 2 EF-hand domains. Contains 1 PH domain. Contains 1 PI-PLC X-box domain. Contains 1 PI-PLC Y-box domain.
細胞内局在	Cytoplasm. Membrane.

画像



All lanes : Anti-Phospholipase c eta 1 antibody (ab97750) at 1/500 dilution

Lane 1 : A431 whole cell lysate

Lane 2 : HepG2 whole cell lysate

Lysates/proteins at 30 µg per lane.

Predicted band size: 185 kDa

5% SDS PAGE

Please note: All products are "FOR RESEARCH USE ONLY AND ARE NOT INTENDED FOR DIAGNOSTIC OR THERAPEUTIC USE"

Our Promise to you: Quality guaranteed and expert technical support

- Replacement or refund for products not performing as stated on the datasheet
- Valid for 12 months from date of delivery
- Response to your inquiry within 24 hours
- We provide support in Chinese, English, French, German, Japanese and Spanish

- Extensive multi-media technical resources to help you
- We investigate all quality concerns to ensure our products perform to the highest standards

If the product does not perform as described on this datasheet, we will offer a refund or replacement. For full details of the Abpromise, please visit <https://www.abcam.co.jp/abpromise> or contact our technical team.

Terms and conditions

- Guarantee only valid for products bought direct from Abcam or one of our authorized distributors