


Product datasheet

Anti-PTPLAD2 antibody ab82949

1 Abreviews [画像数 1](#)

製品の概要

製品名	Anti-PTPLAD2 antibody
製品の詳細	Rabbit polyclonal to PTPLAD2
由来種	Rabbit
アプリケーション	適用あり: WB
種交差性	交差種: Human 交差が予測される動物種: Mouse, Rat, Rabbit, Horse, Chicken, Guinea pig, Cow, Cat, Dog, Pig 
免疫原	Synthetic peptide corresponding to a region within internal sequence amino acids 72-121 (LLHMYGIES NHLLPRFLQL TERIIILFVV ITSQEEVQEK YVVCVLFVFW) of human PTPLAD2 (NP_001010915). Run BLAST with ExPASy Run BLAST with NCBI
ポジティブ・コントロール	293T cell lysate

製品の特性

製品の状態	Liquid
保存方法	Shipped at 4°C. Upon delivery aliquot and store at -20°C. Avoid repeated freeze / thaw cycles.
バッファー	Preservative: 0.09% Sodium azide Constituents: 2% Sucrose, PBS
精製度	Immunogen affinity purified
特記事項(精製)	Purified by peptide affinity chromatography method.
ポリ/モノ	ポリクローナル
アイソタイプ	IgG

アプリケーション

Our [Abpromise guarantee](#) covers the use of **ab82949** in the following tested applications.

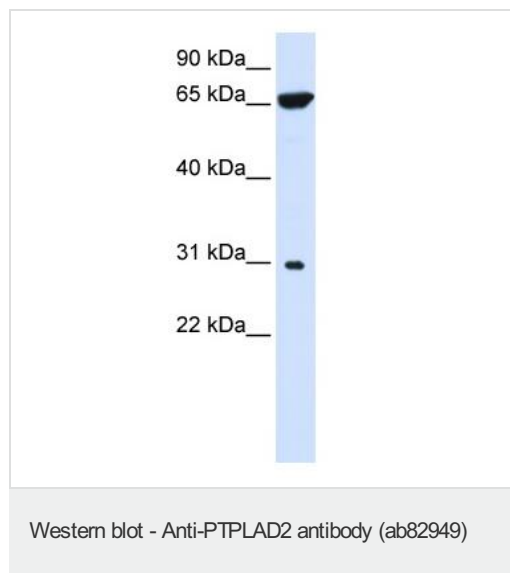
The application notes include recommended starting dilutions; optimal dilutions/concentrations should be determined by the end user.

アプリケーション	Abreviews	特記事項
WB		Use a concentration of 1 µg/ml. Predicted molecular weight: 28 kDa. Good results were obtained when blocked with 5% non-fat dry milk in 0.05% PBS-T.

ターゲット情報

関連性	PTPLAD2 is a protein that belongs to the PTPLA family. The function of PTPLAD2 remains unknown.
細胞内局在	Membrane; Multi pass membrane protein

画像



Anti-PTPLAD2 antibody (ab82949) at 1 µg/ml
(in 5% skim milk / PBS) + 293T cell lysate at
10 µg

Secondary

HRP conjugated anti-Rabbit IgG at 1/50000
dilution

Predicted band size: 28 kDa

Observed band size: 28 kDa

Additional bands at: 66 kDa. We are unsure
as to the identity of these extra bands.

Gel Concentration: 12%

Please note: All products are "FOR RESEARCH USE ONLY AND ARE NOT INTENDED FOR DIAGNOSTIC OR THERAPEUTIC USE"

Our Abpromise to you: Quality guaranteed and expert technical support

- Replacement or refund for products not performing as stated on the datasheet
- Valid for 12 months from date of delivery
- Response to your inquiry within 24 hours
- We provide support in Chinese, English, French, German, Japanese and Spanish
- Extensive multi-media technical resources to help you
- We investigate all quality concerns to ensure our products perform to the highest standards

If the product does not perform as described on this datasheet, we will offer a refund or replacement. For full details of the Abpromise,

please visit <https://www.abcam.co.jp/abpromise> or contact our technical team.

Terms and conditions

- Guarantee only valid for products bought direct from Abcam or one of our authorized distributors