

## Product datasheet

# Anti-PPT1 antibody ab89022

3 References [画像数 3](#)

### 製品の概要

製品名	Anti-PPT1 antibody
製品の詳細	Mouse polyclonal to PPT1
由来種	Mouse
アプリケーション	<b>適用あり:</b> WB, IHC-P
種交差性	<b>交差種:</b> Human
免疫原	Full length Human PPT1, amino acids 1-306 (NP_000301.1)
ポジティブ・コントロール	WB: Human liver tissue lysate, PPT1 transfected HEK-293T cell lysate. IHC-P: Human salivary gland tissue.

### 製品の特性

製品の状態	Liquid
保存方法	Shipped at 4°C. Upon delivery aliquot and store at -20°C or -80°C. Avoid repeated freeze / thaw cycles.
バッファー	pH: 7.20 Constituent: 2.68% PBS
精製度	Protein A purified
ポリ/モノ	ポリクローナル
アイソタイプ	IgG

### アプリケーション

Our [Abpromise guarantee](#) covers the use of **ab89022** in the following tested applications.

The application notes include recommended starting dilutions; optimal dilutions/concentrations should be determined by the end user.

アプリケーション	Abreviews	特記事項
WB		
IHC-P		

### 追加情報

IHC-P: Use at a concentration of 3 µg/ml. Antigen retrieval is recommended Place sample in 1X

citrate buffer (pH 6.0) and microwave at 750W for 20 minutes, cool sample  
WB: Use at a concentration of 1 µg/ml. Detects a band of approximately 34 kDa (predicted molecular weight: 34 kDa).

Not yet tested in other applications.

Optimal dilutions/concentrations should be determined by the end user.

## ターゲット情報

---

### 機能

Removes thioester-linked fatty acyl groups such as palmitate from modified cysteine residues in proteins or peptides during lysosomal degradation. Prefers acyl chain lengths of 14 to 18 carbons.

### 関連疾患

Defects in PPT1 are the cause of neuronal ceroid lipofuscinosis type 1 (CLN1) [MIM:256730]. A form of neuronal ceroid lipofuscinosis with variable age at onset. Infantile, late-infantile, juvenile, and adult onset have been reported. Neuronal ceroid lipofuscinoses are progressive neurodegenerative, lysosomal storage diseases characterized by intracellular accumulation of autofluorescent liposomal material, and clinically by seizures, dementia, visual loss, and/or cerebral atrophy. The lipopigment pattern seen most often in CLN1 is referred to as granular osmiophilic deposits (GROD).

### 配列類似性

Belongs to the palmitoyl-protein thioesterase family.

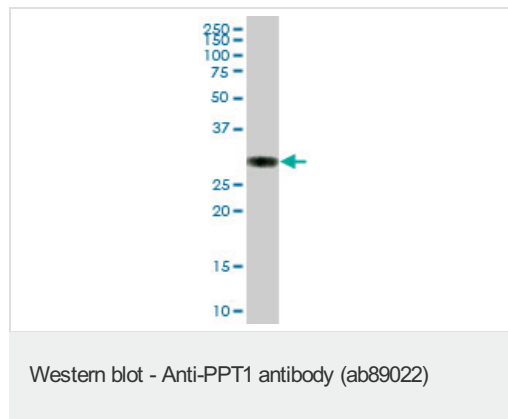
### 細胞内局在

Lysosome.

---

## 画像

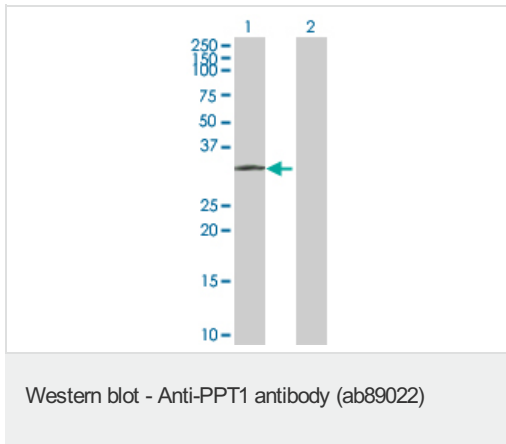
---



Anti-PPT1 antibody (ab89022) at 1 µg/ml +  
Human liver tissue lysate at 50 µg

**Predicted band size:** 34 kDa

**Observed band size:** 34 kDa



**All lanes :** Anti-PPT1 antibody (ab89022) at 1 µg/ml

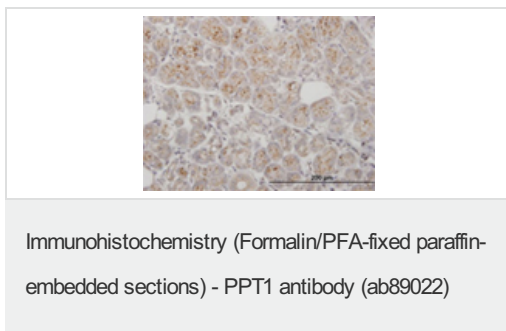
**Lane 1 :** PPT1 transfected HEK-293T cell lysate

**Lane 2 :** Non-transfected lysate

Lysates/proteins at 25 µg per lane.

**Predicted band size:** 34 kDa

**Observed band size:** 34 kDa



ab89022 at 3µg/ml staining PPT1 in Human salivary gland by Immunohistochemistry, Formalin-fixed, Paraffin-embedded tissue.

**Please note:** All products are "FOR RESEARCH USE ONLY AND ARE NOT INTENDED FOR DIAGNOSTIC OR THERAPEUTIC USE"

### Our Abpromise to you: Quality guaranteed and expert technical support

- Replacement or refund for products not performing as stated on the datasheet
- Valid for 12 months from date of delivery
- Response to your inquiry within 24 hours
- We provide support in Chinese, English, French, German, Japanese and Spanish
- Extensive multi-media technical resources to help you
- We investigate all quality concerns to ensure our products perform to the highest standards

If the product does not perform as described on this datasheet, we will offer a refund or replacement. For full details of the Abpromise, please visit <https://www.abcam.co.jp/abpromise> or contact our technical team.

### Terms and conditions

- Guarantee only valid for products bought direct from Abcam or one of our authorized distributors