


Product datasheet

Anti-POU4F3 antibody ab66260

2 References [画像数 2](#)

製品の概要

製品名	Anti-POU4F3 antibody
製品の詳細	Rabbit polyclonal to POU4F3
由来種	Rabbit
アプリケーション	適用あり: WB, ELISA, IHC-P
種交差性	交差種: Rat, Human 交差が予測される動物種: Mouse, Rabbit, Horse, Chicken, Guinea pig, Cow, Cat, Dog, Pig, Caenorhabditis elegans, Drosophila melanogaster, Zebrafish 
免疫原	Synthetic peptide within Human POU4F3 aa 211-260 (internal sequence). The exact sequence is proprietary. Sequence: ALANLKIPGVGSLSQSTICRFESLTLSHNNMIALKPVLQAWLEEEAAAYR

Database link: [Q15319](#)

 [Run BLAST with](#)

 [Run BLAST with](#)

ポジティブ・コントロール

[ウェスタン・ブロット用ポジティブコントロール
Recombinant Human POU4F3 protein >](#)

HepG2 cell lysate. Human Kidney tissue.

製品の特性

製品の状態	Liquid
保存方法	Shipped at 4°C. Upon delivery aliquot and store at -20°C. Avoid freeze / thaw cycles.
バッファー	Preservative: 0.09% Sodium azide Constituents: 2% Sucrose, PBS
精製度	Protein A purified
ポリ/モノ	ポリクローナル
アイソタイプ	IgG

アプリケーション

Our [Abpromise guarantee](#) covers the use of **ab66260** in the following tested applications.

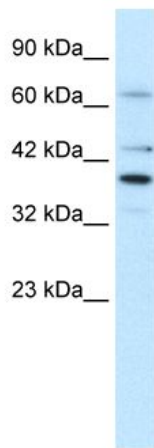
The application notes include recommended starting dilutions; optimal dilutions/concentrations should be determined by the end user.

アプリケーション	Abreviews	特記事項
WB		Use a concentration of 1.25 µg/ml. Detects a band of approximately 37 kDa (predicted molecular weight: 37 kDa). Good results were obtained when blocked with 5% non-fat dry milk in 0.05% PBS-T.
ELISA		Use at an assay dependent concentration. Titre using peptide based assay 1/312500.
IHC-P		Use a concentration of 4 - 8 µg/ml.

ターゲット情報

機能	May play a role in determining or maintaining the identities of a small subset of visual system neurons.
組織特異性	Brain. Seems to be specific to the retina.
関連疾患	Defects in POU4F3 are the cause of deafness autosomal dominant type 15 (DFNA15) [MIM:602459]. DFNA15 is a form of sensorineural hearing loss. Sensorineural deafness results from damage to the neural receptors of the inner ear, the nerve pathways to the brain, or the area of the brain that receives sound information.
配列類似性	Belongs to the POU transcription factor family. Class-4 subfamily. Contains 1 homeobox DNA-binding domain. Contains 1 POU-specific domain.
細胞内局在	Nucleus.

画像



Western blot - Anti-POU4F3 antibody (ab66260)

Anti-POU4F3 antibody (ab66260) at 1.25 $\mu\text{g/ml}$ + HepG2 cell lysate at 10 μg

Secondary

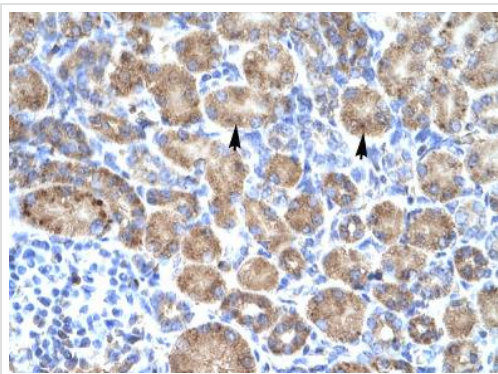
HRP conjugated anti-Rabbit IgG at 1/50000 dilution

Predicted band size: 37 kDa

Observed band size: 37 kDa

Additional bands at: 34 kDa, 45 kDa, 64 kDa. We are unsure as to the identity of these extra bands.

Antibody diluted in 5% skim milk / PBS buffer.
Gel concentration 12%.



Immunohistochemistry (Formalin/PFA-fixed paraffin-embedded sections) - Anti-POU4F3 antibody (ab66260)

Immunohistochemistry (Formalin/PFA-fixed paraffin-embedded sections) analysis of human kidney tissue labelling POU4F3 with ab66260 at 4-8 $\mu\text{g/ml}$. Arrows indicate positively labelled epithelial cells of the renal tubule. Magnification: 400X.

Please note: All products are "FOR RESEARCH USE ONLY AND ARE NOT INTENDED FOR DIAGNOSTIC OR THERAPEUTIC USE"

Our Abpromise to you: Quality guaranteed and expert technical support

- Replacement or refund for products not performing as stated on the datasheet
- Valid for 12 months from date of delivery
- Response to your inquiry within 24 hours
- We provide support in Chinese, English, French, German, Japanese and Spanish
- Extensive multi-media technical resources to help you
- We investigate all quality concerns to ensure our products perform to the highest standards

If the product does not perform as described on this datasheet, we will offer a refund or replacement. For full details of the Abpromise,

please visit <https://www.abcam.co.jp/abpromise> or contact our technical team.

Terms and conditions

- Guarantee only valid for products bought direct from Abcam or one of our authorized distributors