


Product datasheet

Anti-PMM2 antibody ab96399

画像数 1

製品の概要

製品名	Anti-PMM2 antibody
製品の詳細	Rabbit polyclonal to PMM2
由来種	Rabbit
アプリケーション	適用あり: WB
種交差性	交差種: Human 交差が予測される動物種: Mouse, Rat, Cow 
免疫原	Recombinant fragment, corresponding to amino acids 1-184 of Human PMM2.
ポジティブ・コントロール	HeLa and HepG2 whole cell lysates; 293T cell lysate.

法規制情報

医薬用外毒物

製品の特性

製品の状態	Liquid
保存方法	Shipped at 4°C. Upon delivery aliquot. Store at -20°C or -80°C. Avoid freeze / thaw cycle.
バッファー	Preservative: 0.01% Thimerosal (merthiolate) Constituents: 20% Glycerol, 0.1M Tris, 0.1M Glycine, pH 7.0
精製度	Immunogen affinity purified
ポリ/モノ	ポリクローナル
アイソタイプ	IgG

アプリケーション

Our [Abpromise guarantee](#) covers the use of **ab96399** in the following tested applications.

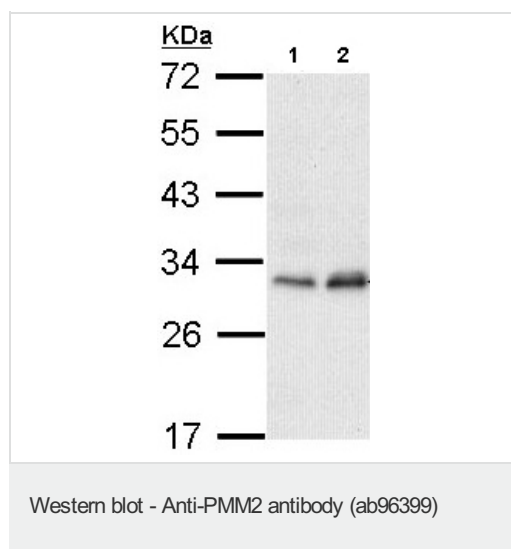
The application notes include recommended starting dilutions; optimal dilutions/concentrations should be determined by the end user.

アプリケーション	Abreviews	特記事項
WB		1/1000. Predicted molecular weight: 28 kDa.

ターゲット情報

機能	Involved in the synthesis of the GDP-mannose and dolichol-phosphate-mannose required for a number of critical mannosyl transfer reactions.
パスウェイ	Nucleotide-sugar biosynthesis; GDP-alpha-D-mannose biosynthesis; alpha-D-mannose 1-phosphate from D-fructose 6-phosphate: step 2/2.
関連疾患	Defects in PMM2 are the cause of congenital disorder of glycosylation type 1A (CDG1A) [MIM:212065]; also known as carbohydrate-deficient glycoprotein syndrome type Ia (CDGS1A) or Jaeken syndrome. Congenital disorders of glycosylation are metabolic deficiencies in glycoprotein biosynthesis that usually cause severe mental and psychomotor retardation. They are characterized by under-glycosylated serum glycoproteins. CDG1A is an autosomal recessive disorder characterized by a severe encephalopathy with axial hypotonia, abnormal eye movement, and pronounced psychomotor retardation, as well as peripheral neuropathy, cerebellar hypoplasia, and retinitis pigmentosa. Patients show a peculiar distribution of subcutaneous fat, nipple retraction, and hypogonadism.
配列類似性	Belongs to the eukaryotic PMM family.
細胞内局在	Cytoplasm.

画像



All lanes : Anti-PMM2 antibody (ab96399) at 1/1000 dilution

Lane 1 : HeLa whole cell lysate

Lane 2 : HepG2 whole cell lysate

Lysates/proteins at 30 µg per lane.

Predicted band size: 28 kDa

12% SDS PAGE

Please note: All products are "FOR RESEARCH USE ONLY AND ARE NOT INTENDED FOR DIAGNOSTIC OR THERAPEUTIC USE"

Our Abpromise to you: Quality guaranteed and expert technical support

- Replacement or refund for products not performing as stated on the datasheet

- Valid for 12 months from date of delivery
- Response to your inquiry within 24 hours

- We provide support in Chinese, English, French, German, Japanese and Spanish
- Extensive multi-media technical resources to help you
- We investigate all quality concerns to ensure our products perform to the highest standards

If the product does not perform as described on this datasheet, we will offer a refund or replacement. For full details of the Abpromise, please visit <https://www.abcam.co.jp/abpromise> or contact our technical team.

Terms and conditions

- Guarantee only valid for products bought direct from Abcam or one of our authorized distributors