

Product datasheet

Anti-PET112L antibody ab122802

画像数 3

製品の概要

製品名	Anti-PET112L antibody
製品の詳細	Rabbit polyclonal to PET112L
由来種	Rabbit
アプリケーション	適用あり: WB, IHC-P, ICC/IF
種交差性	交差種: Human
免疫原	antigen sequence: WKREGKTPGQ IVSEKQLELM QDQGALEQLC HSVMEAHPQV VMDVKNRNPR AINKLIGLVR KATQSRADPV MIKEILEKK, corresponding to amino acids of Human PET112L. Run BLAST with ExPASy Run BLAST with NCBI
ポジティブ・コントロール	RT4, U251 MG, Human liver and tonsil lysates; Human colon tissue; U 2 OS cells.

製品の特性

製品の状態	Liquid
保存方法	Shipped at 4°C. Upon delivery aliquot and store at -20°C. Avoid freeze / thaw cycles.
バッファー	pH: 7.20 Preservative: 0.02% Sodium azide Constituents: 59% PBS, 40% Glycerol
精製度	Immunogen affinity purified
ポリ/モノ	ポリクローナル
アイソタイプ	IgG

アプリケーション

Our [Abpromise guarantee](#) covers the use of **ab122802** in the following tested applications.

The application notes include recommended starting dilutions; optimal dilutions/concentrations should be determined by the end user.

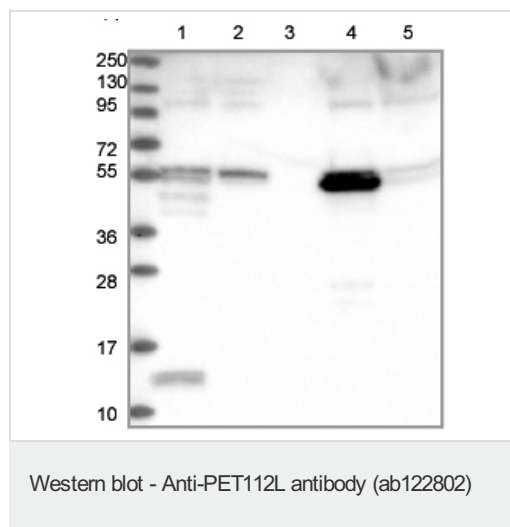
アプリケーション	Abreviews	特記事項
WB		1/250 - 1/500.

アプリケーション	Abreviews	特記事項
IHC-P		1/500 - 1/1000. Perform heat mediated antigen retrieval with citrate buffer pH 6 before commencing with IHC staining protocol.
ICC/IF		Use a concentration of 1 - 4 µg/ml. using PFA/Triton X-100 Fixation/Permeabilization.

ターゲット情報

機能	Furnishes a means for formation of correctly charged Gln-tRNA(Gln) through the transamidation of misacylated Glu-tRNA(Gln) in the mitochondria. The reaction takes place in the presence of glutamine and ATP through an activated gamma-phospho-Glu-tRNA(Gln).
組織特異性	Predominantly expressed in tissues characterized by high rates of oxidative phosphorylation (OxPhos), including muscle and heart.
配列類似性	Belongs to the gatB/gatE family. GatB subfamily.
細胞内局在	Mitochondrion.

画像



All lanes : Anti-PET112L antibody
(ab122802) at 1/250 dilution

Lane 1 : RT 4 lysate

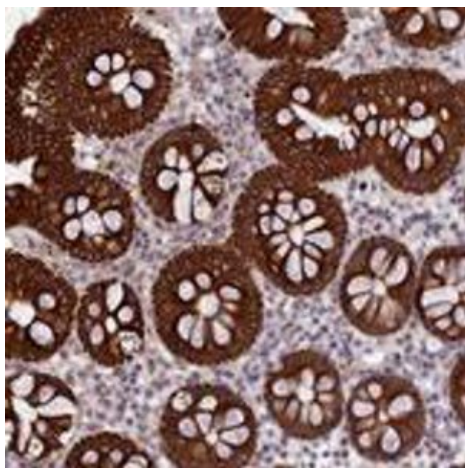
Lane 2 : U 251 MG lysate

Lane 3 : Human plasma lysate

Lane 4 : Human liver lysate

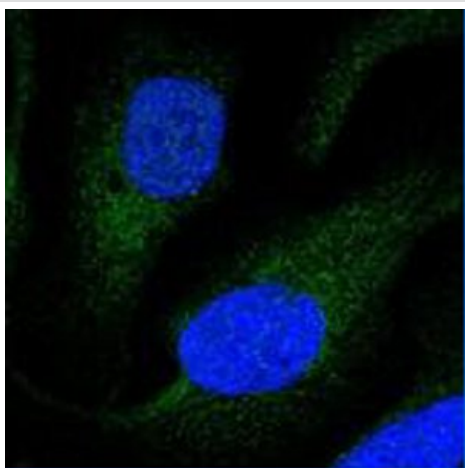
Lane 5 : Human tonsil lysate

Developed using the ECL technique.



ab122802, at 1/500 dilution, staining
PET112L in Paraffin-embedded Human colon
tissue by Immunohistochemistry

Immunohistochemistry (Formalin/PFA-fixed paraffin-
embedded sections) - Anti-PET112L antibody
(ab122802)



ab122802 at 4 µg/ml staining PET112L in
PFA/Triton X-100 fixed/permeabilized U 2 OS
cells by Immunofluorescence (green).

Immunocytochemistry/ Immunofluorescence - Anti-
PET112L antibody (ab122802)

Please note: All products are "FOR RESEARCH USE ONLY AND ARE NOT INTENDED FOR DIAGNOSTIC OR THERAPEUTIC USE"

Our Abpromise to you: Quality guaranteed and expert technical support

- Replacement or refund for products not performing as stated on the datasheet
- Valid for 12 months from date of delivery
- Response to your inquiry within 24 hours
- We provide support in Chinese, English, French, German, Japanese and Spanish
- Extensive multi-media technical resources to help you
- We investigate all quality concerns to ensure our products perform to the highest standards

If the product does not perform as described on this datasheet, we will offer a refund or replacement. For full details of the Abpromise, please visit <https://www.abcam.co.jp/abpromise> or contact our technical team.

Terms and conditions

- Guarantee only valid for products bought direct from Abcam or one of our authorized distributors