

Product datasheet

Anti-PDZK1 antibody [EPR3751] ab92491

リコンビナント RabMAb[®]

1 References 画像数 2

製品の概要

製品名	Anti-PDZK1 antibody [EPR3751]
製品の詳細	Rabbit monoclonal [EPR3751] to PDZK1
由来種	Rabbit
アプリケーション	適用あり: WB, IP 適用なし: Flow Cyt, ICC/IF or IHC-P
種交差性	交差種: Human
免疫原	Synthetic peptide within Human PDZK1 aa 450-550. The exact sequence is proprietary.
ポジティブ・コントロール	WB: Human fetal liver, fetal kidney and kidney tissue lysates.
特記事項	Mouse, Rat: We have preliminary internal testing data to indicate this antibody may not react with these species. Please contact us for more information. Our RabMAb [®] technology is a patented hybridoma-based technology for making rabbit monoclonal antibodies. For details on our patents, please refer to RabMAb[®] patents This product is a recombinant rabbit monoclonal antibody.

製品の特性

製品の状態	Liquid
保存方法	Shipped at 4°C. Upon delivery aliquot and store at -20°C. Avoid freeze / thaw cycles.
バッファー	pH: 7.20 Preservative: 0.05% Sodium azide Constituents: 0.1% BSA, 40% Glycerol, 9.85% Tris glycine, 50% Tissue culture supernatant
精製度	Tissue culture supernatant
ポリ/モノ	モノクローナル
クローン名	EPR3751
アイソタイプ	IgG

アプリケーション

Our [Abpromise guarantee](#) covers the use of **ab92491** in the following tested applications.

The application notes include recommended starting dilutions; optimal dilutions/concentrations should be determined by the end user.

アプリケーション	Abreviews	特記事項
WB		1/5000 - 1/10000. Detects a band of approximately 70 kDa (predicted molecular weight: 57 kDa).
IP		1/50.

追加情報 Is unsuitable for Flow Cyt, ICC/IF or IHC-P.

ターゲット情報

機能 A scaffold protein that connects plasma membrane proteins and regulatory components, regulating their surface expression in epithelial cells apical domains. May be involved in the coordination of a diverse range of regulatory processes for ion transport and second messenger cascades. In complex with SLC9A3R1, may cluster proteins that are functionally dependent in a mutual fashion and modulate the trafficking and the activity of the associated membrane proteins. May play a role in the cellular mechanisms associated with multidrug resistance through its interaction with ABCC2 and PDZK1IP1. May potentiate the CFTR chloride channel activity. May function to connect SCARB1 with the cellular machineries for intracellular cholesterol transport and/or metabolism. May be involved in the regulation of proximal tubular Na(+)-dependent inorganic phosphate cotransport therefore playing an important role in tubule function.

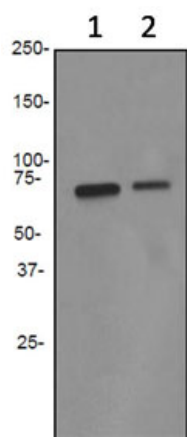
組織特異性 Expression is limited to epithelial cells. Expressed in the kidney (brush border of proximal tubule), pancreas, liver, and small intestine. Expressed at a lower level in the adrenal cortex, testis and stomach. Overexpressed in breast, renal and lung carcinomas.

配列類似性 Belongs to the NHER family.
Contains 4 PDZ (DHR) domains.

ドメイン The PDZ 2 and 3 domains seem to be involved in the interaction with SLC26A3.
Interaction with the C-terminus of CFTR could be mediated through independent binding of PDZ 1, 3 and 4 domains.
The PDZ 1 and 3 domains seem to be involved in the interaction with SLCO1A1.
The PDZ 1 domain interacts with BCR.

細胞内局在 Cytoplasm. Membrane. Associated with peripheral membranes. Localizes to the apical compartment of proximal tubular cells and to sinusoidal liver membranes.

画像



Western blot - Anti-PDZK1 antibody [EPR3751]
(ab92491)

All lanes : Anti-PDZK1 antibody [EPR3751]
(ab92491) at 1/5000 dilution

Lane 1 : Human fetal liver lysate

Lane 2 : Human fetal kidney lysate

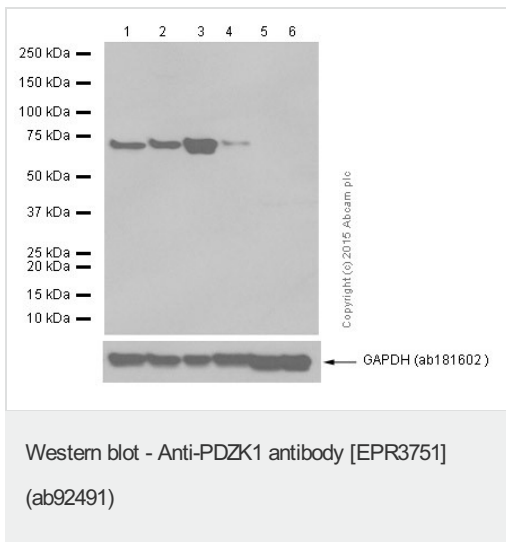
Lysates/proteins at 10 µg per lane.

Secondary

All lanes : HRP labelled goat anti-rabbit at
1/2000 dilution

Predicted band size: 57 kDa

Observed band size: 70 kDa



All lanes : Anti-PDZK1 antibody [EPR3751] (ab92491) at 1/1000 dilution

Lane 1 : Human fetal liver lysate

Lane 2 : Human fetal kidney lysate

Lane 3 : T47-D (human mammary gland ductal carcinoma) cell lysate

Lane 4 : Caco-2 (human colorectal adenocarcinoma) cell lysate

Lane 5 : HeLa (human cervix adenocarcinoma) cell lysate

Lane 6 : MCF-7 (human breast carcinoma) cell lysate

Lysates/proteins at 20 µg/ml per lane.

Secondary

All lanes : Goat Anti-Rabbit IgG H&L (HRP) (ab97051) at 1/20000 dilution

Predicted band size: 57 kDa

Exposure time: 5 seconds

Please note: All products are "FOR RESEARCH USE ONLY AND ARE NOT INTENDED FOR DIAGNOSTIC OR THERAPEUTIC USE"

Our Abpromise to you: Quality guaranteed and expert technical support

- Replacement or refund for products not performing as stated on the datasheet
- Valid for 12 months from date of delivery
- Response to your inquiry within 24 hours
- We provide support in Chinese, English, French, German, Japanese and Spanish
- Extensive multi-media technical resources to help you
- We investigate all quality concerns to ensure our products perform to the highest standards

If the product does not perform as described on this datasheet, we will offer a refund or replacement. For full details of the Abpromise, please visit <https://www.abcam.co.jp/abpromise> or contact our technical team.

Terms and conditions

- Guarantee only valid for products bought direct from Abcam or one of our authorized distributors