

Product datasheet

Anti-PDE3A antibody ab125676

1 Abreviews [画像数 1](#)

製品の概要

製品名	Anti-PDE3A antibody
製品の詳細	Rabbit polyclonal to PDE3A
由来種	Rabbit
アプリケーション	適用あり: IHC-P, IP, WB
種交差性	交差種: Mouse, Rat, Human
免疫原	Synthetic peptide, from the C-terminal region of Human PDE3A.
ポジティブ・コントロール	Lysate from COS cells transfected with Human PDE isoforms.

製品の特性

製品の状態	Liquid
保存方法	Shipped at 4°C. Upon delivery aliquot and store at -20°C or -80°C. Avoid repeated freeze / thaw cycles.
バッファー	Constituent: 99% Whole serum
精製度	Whole antiserum
ポリ/モノ	ポリクローナル
アイソタイプ	IgG

アプリケーション

Our [Abpromise guarantee](#) covers the use of **ab125676** in the following tested applications.

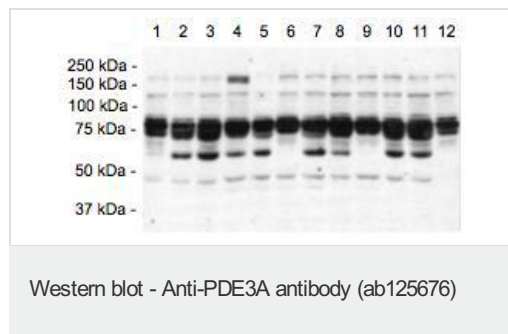
The application notes include recommended starting dilutions; optimal dilutions/concentrations should be determined by the end user.

アプリケーション	Abreviews	特記事項
IHC-P		Use at an assay dependent concentration.
IP		Use at an assay dependent concentration.
WB		1/2000. Predicted molecular weight: 125 kDa.

ターゲット情報

機能	Cyclic nucleotide phosphodiesterase with a dual-specificity for the second messengers cAMP and cGMP, which are key regulators of many important physiological processes.
配列類似性	Belongs to the cyclic nucleotide phosphodiesterase family. PDE3 subfamily.
細胞内局在	Membrane.

画像



All lanes : Anti-PDE3A antibody (ab125676) at 1/2000 dilution

Lane 1 : COS cell lysate, non-transfected

Lane 2 : COS cell lysate, transfected with Human PDE1A3

Lane 3 : COS cell lysate, transfected with Human PDE2A3

Lane 4 : COS cell lysate, transfected with Human PDE3A

Lane 5 : COS cell lysate, transfected with Human PDE3B

Lane 6 : COS cell lysate, transfected with Human PDE4D2

Lane 7 : COS cell lysate, transfected with Human PDE5A1

Lane 8 : COS cell lysate, transfected with Human PDE5A3

Lane 9 : COS cell lysate, transfected with Human PDE7A1

Lane 10 : COS cell lysate, transfected with Human PDE8A1

Lane 11 : COS cell lysate, transfected with Human PDE10A1

Lane 12 : COS cell lysate, transfected with Human PDE11A1

Predicted band size: 125 kDa

Please note: All products are "FOR RESEARCH USE ONLY AND ARE NOT INTENDED FOR DIAGNOSTIC OR THERAPEUTIC USE"

Our Abpromise to you: Quality guaranteed and expert technical support

- Replacement or refund for products not performing as stated on the datasheet
- Valid for 12 months from date of delivery
- Response to your inquiry within 24 hours
- We provide support in Chinese, English, French, German, Japanese and Spanish
- Extensive multi-media technical resources to help you
- We investigate all quality concerns to ensure our products perform to the highest standards

If the product does not perform as described on this datasheet, we will offer a refund or replacement. For full details of the Abpromise, please visit <https://www.abcam.co.jp/abpromise> or contact our technical team.

Terms and conditions

- Guarantee only valid for products bought direct from Abcam or one of our authorized distributors