

Product datasheet

Anti-PAX4 antibody ab42450

1 References [画像数 3](#)

製品の概要

製品名	Anti-PAX4 antibody
製品の詳細	Rabbit polyclonal to PAX4
由来種	Rabbit
アプリケーション	適用あり: IHC-P, ELISA, WB
種交差性	交差種: Human 交差が予測される動物種: Mouse, Rat, Dog
免疫原	Synthetic peptide: RTIFSPSQAE ALEKEFQRGQ YPDSVARGKL ATATSLPEDT VRVWFSNRRRA , corresponding to Internal sequence amino acids 184-233 of Human PAX4 Run BLAST with ExPASy Run BLAST with NCBI
ポジティブ・コントロール	Jurkat cell lysate; Human intestinal tissue; Human kidney tissue

製品の特性

製品の状態	Liquid
保存方法	Shipped at 4°C. Upon delivery aliquot and store at -20°C. Avoid freeze / thaw cycles.
バッファー	Preservative: 0.09% Sodium azide Constituents: 2% Sucrose, PBS
精製度	Immunogen affinity purified
ポリ/モノ	ポリクローナル
アイソタイプ	IgG

アプリケーション

Our [Abpromise guarantee](#) covers the use of **ab42450** in the following tested applications.

The application notes include recommended starting dilutions; optimal dilutions/concentrations should be determined by the end user.

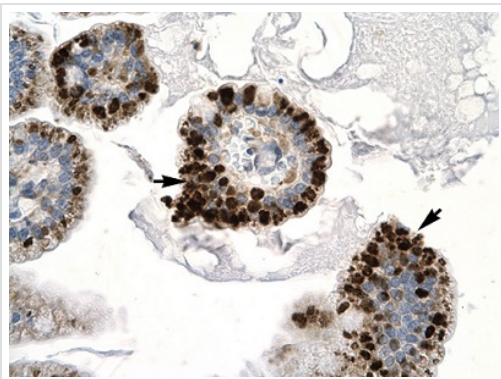
アプリケーション	Abreviews	特記事項
IHC-P		Use at an assay dependent concentration.

アプリ ケーション	Abreviews	特記事項
ELISA		1/312500.
WB		Use a concentration of 0.5 - 2 µg/ml. Detects a band of approximately 42 kDa (predicted molecular weight: 37 kDa). Good results were obtained when blocked with 5% non-fat dry milk in 0.05% PBS-T.

ターゲット情報

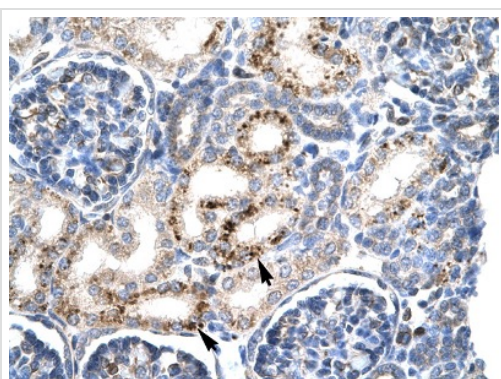
機能	<p>Plays an important role in the differentiation and development of pancreatic islet beta cells. Transcriptional repressor that binds to a common element in the glucagon, insulin and somatostatin promoters. Competes with PAX6 for this same promoter binding site. Isoform 2 appears to be a dominant negative form antagonizing PAX4 transcriptional activity.</p>
関連疾患	<p>Defects in PAX4 are a cause of noninsulin-dependent diabetes mellitus (NIDDM) [MIM:125853]; also known as diabetes mellitus type 2 or maturity-onset diabetes. NIDDM is characterized by an autosomal dominant mode of inheritance, onset during adulthood and insulin resistance. Genetic variations in PAX4 are associated with susceptibility to insulin-dependent diabetes mellitus (IDDM) [MIM:222100]. IDDM normally starts in childhood or adolescence and is caused by the body's own immune system which destroys the insulin-producing beta cells in the pancreas. Classical features are polydipsia, polyphagia and polyuria, due to hyperglycemia-induced osmotic diuresis.</p> <p>Defects in PAX4 are a cause of susceptibility to diabetes mellitus ketosis-prone (KPD) [MIM:612227]. KPD is an atypical form of diabetes mellitus characterized by an acute initial presentation with severe hyperglycemia and ketosis, as seen in classic type 1 diabetes, but after initiation of insulin therapy, prolonged remission is often possible with cessation of insulin therapy and maintenance of appropriate metabolic control. Metabolic studies show a markedly blunted insulin secretory response to glucose, partially reversible with the improvement of blood glucose control. Variable levels of insulin resistance are observed, especially in obese patients. Pancreatic beta-cell autoimmunity is a rare finding.</p> <p>Defects in PAX4 are the cause of maturity-onset diabetes of the young type 9 (MODY9) [MIM:612225]. MODY is a form of diabetes that is characterized by an autosomal dominant mode of inheritance, onset in childhood or early adulthood (usually before 25 years of age), a primary defect in insulin secretion and frequent insulin-independence at the beginning of the disease.</p>
配列類似性	<p>Belongs to the paired homeobox family.</p> <p>Contains 1 homeobox DNA-binding domain.</p> <p>Contains 1 paired domain.</p>
細胞内局在	Nucleus.

画像



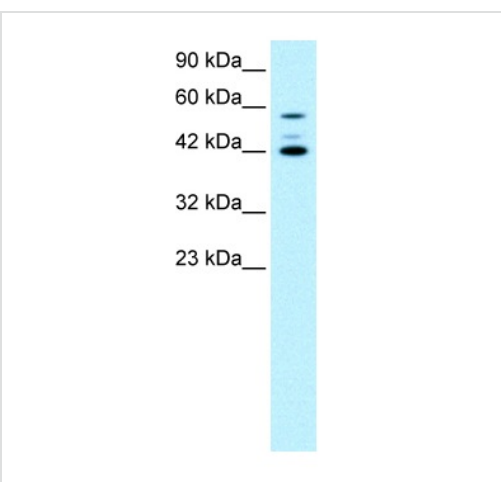
Immunohistochemistry (Formalin/PFA-fixed paraffin-embedded sections) - Anti-PAX4 antibody (ab42450)

Ab42450 at 4µg/ml staining human PAX4 in human epithelial cells of intestinal villus by immunohistochemistry, paraffin embedded human intestine tissue.



Immunohistochemistry (Formalin/PFA-fixed paraffin-embedded sections) - Anti-PAX4 antibody (ab42450)

Ab42450 at 4µg/ml staining human PAX4 in epithelial cells of renal tubule by immunohistochemistry, paraffin embedded human kidney tissue.



Western blot - Anti-PAX4 antibody (ab42450)

Anti-PAX4 antibody (ab42450) at 0.5 µg/ml + Jurkat cell lysate at 10 µg

Secondary

HRP conjugated anti-Rabbit IgG at 1/50000 dilution

Developed using the ECL technique.

Predicted band size: 37 kDa

Observed band size: 42 kDa

Additional bands at: 58 kDa. We are unsure as to the identity of these extra bands.

Gel concentration 12% Tris-glycine

Our Abpromise to you: Quality guaranteed and expert technical support

- Replacement or refund for products not performing as stated on the datasheet
- Valid for 12 months from date of delivery
- Response to your inquiry within 24 hours

- We provide support in Chinese, English, French, German, Japanese and Spanish
- Extensive multi-media technical resources to help you
- We investigate all quality concerns to ensure our products perform to the highest standards

If the product does not perform as described on this datasheet, we will offer a refund or replacement. For full details of the Abpromise, please visit <https://www.abcam.co.jp/abpromise> or contact our technical team.

Terms and conditions

- Guarantee only valid for products bought direct from Abcam or one of our authorized distributors