


Product datasheet

Anti-PAK1 antibody, prediluted ab32615

1 References [画像数 1](#)

製品の概要

製品名	Anti-PAK1 antibody, prediluted
製品の詳細	Rabbit polyclonal to PAK1, prediluted
由来種	Rabbit
アプリケーション	適用あり: IHC-P
種交差性	交差種: Human 交差が予測される動物種: Mouse, Rat 
免疫原	Synthetic peptide corresponding to PAK1.
ポジティブ・コントロール	Brain extracts. Breast carcinoma.

製品の特性

製品の状態	Prediluted
保存方法	Shipped at 4°C. Store at +4°C.
バッファー	pH: 7.60 Preservative: 0.1% Sodium azide Constituents: 0.605% Tris, 1% BSA
精製度	Immunogen affinity purified
ポリ/モノ	ポリクローナル
アイソタイプ	IgG

アプリケーション

Our [Abpromise guarantee](#) covers the use of **ab32615** in the following tested applications.

The application notes include recommended starting dilutions; optimal dilutions/concentrations should be determined by the end user.

アプリケーション	Abreviews	特記事項
----------	-----------	------

IHC-P

追加情報

IHC-P: Ready-to-use for 30 min at RT. Perform heat mediated antigen retrieval by boiling tissue sections in 10mM citrate buffer, pH 6.0 for 10 min followed by cooling at RT for 20 min before commencing with IHC staining protocol.

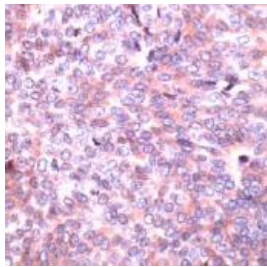
Not yet tested in other applications.

Optimal dilutions/concentrations should be determined by the end user.

ターゲット情報

機能	The activated kinase acts on a variety of targets. Likely to be the GTPase effector that links the Rho-related GTPases to the JNK MAP kinase pathway. Activated by CDC42 and RAC1. Involved in dissolution of stress fibers and reorganization of focal complexes. Involved in regulation of microtubule biogenesis through phosphorylation of TBCB. Activity is inhibited in cells undergoing apoptosis, potentially due to binding of CDC2L1 and CDC2L2.
配列類似性	Belongs to the protein kinase superfamily. STE Ser/Thr protein kinase family. STE20 subfamily. Contains 1 CRIB domain. Contains 1 protein kinase domain.
翻訳後修飾	Autophosphorylated when activated by CDC42/p21 and RAC1.
細胞内局在	Cytoplasm. Cell junction > focal adhesion. Recruited to focal adhesions upon activation.

画像



Formalin fixed paraffin embedded human breast carcinoma stained with ab32615 at 1/50.

Immunohistochemistry (Formalin/PFA-fixed paraffin-embedded sections) - Anti-PAK1 antibody, prediluted (ab32615)

Please note: All products are "FOR RESEARCH USE ONLY AND ARE NOT INTENDED FOR DIAGNOSTIC OR THERAPEUTIC USE"

Our Abpromise to you: Quality guaranteed and expert technical support

- Replacement or refund for products not performing as stated on the datasheet
- Valid for 12 months from date of delivery
- Response to your inquiry within 24 hours
- We provide support in Chinese, English, French, German, Japanese and Spanish
- Extensive multi-media technical resources to help you
- We investigate all quality concerns to ensure our products perform to the highest standards

If the product does not perform as described on this datasheet, we will offer a refund or replacement. For full details of the Abpromise, please visit <https://www.abcam.co.jp/abpromise> or contact our technical team.

Terms and conditions

- Guarantee only valid for products bought direct from Abcam or one of our authorized distributors