

Product datasheet

Anti-Osteocalcin antibody [OCG3] ab13420

★★★★☆ 3 Abreviews 46 References 画像数 2

製品の概要

製品名	Anti-Osteocalcin antibody [OCG3]
製品の詳細	Mouse monoclonal [OCG3] to Osteocalcin
由来種	Mouse
アプリケーション	適用あり: WB, IHC-Fr, IHC-P, Sandwich ELISA, ICC/IF
種交差性	交差種: Rat, Sheep, Rabbit, Goat, Chicken, Cow, Dog, Human, Pig 非交差種: Mouse
免疫原	Full length protein corresponding to Cow Osteocalcin. Database link: P02820
エピトープ	Residues 21-31
ポジティブ・コントロール	Normal bovine bone tissue
特記事項	<p>Though we have found ab13420 does not react with mouse sample in our lab, there is a report from a reviewer that got positive result with mouse sample in IHC-Fr. However, this information needs to be confirmed further.</p> <p>Although this antibody does work in IHC-P, we have found that ab13418 typically gives a more robust signal. Therefore, if you plan on using this antibody in IHC-P, we recommend ab13418 as an alternative option.</p> <p>Abcam is committed to meeting high standards of ethical manufacturing and has decided to discontinue this product by June 2019 as it has been generated by the ascites method. We are sorry for any inconvenience this may cause.</p>

製品の特性

製品の状態	Liquid
保存方法	Shipped at 4°C. Store at +4°C short term (1-2 weeks). Upon delivery aliquot. Store at -20°C or -80°C. Avoid freeze / thaw cycle.
バッファー	pH: 7.40 Preservative: 0.1% Sodium azide Constituents: 0.0268% PBS, 1% BSA
精製度	Protein A purified
ポリ/モノ	モノクローナル

クローン名 OCG3
アイソタイプ IgG3

アプリケーション

Our [Abpromise guarantee](#) covers the use of **ab13420** in the following tested applications.

The application notes include recommended starting dilutions; optimal dilutions/concentrations should be determined by the end user.

アプリケーション	Abreviews	特記事項
WB		Use a concentration of 1 - 10 µg/ml. Predicted molecular weight: 12 kDa. Use under reducing or non-reducing conditions.
IHC-Fr	★★★★☆	Use a concentration of 1 - 10 µg/ml.
IHC-P	★★★★☆	Use a concentration of 10 µg/ml. Enzymatic retrieval with Proteinase K is recommended.
Sandwich ELISA		Use a concentration of 1 - 10 µg/ml. For use in sandwich ELISA with ab13421
ICC/IF		Use at an assay dependent concentration. PubMed: 21396708

ターゲット情報

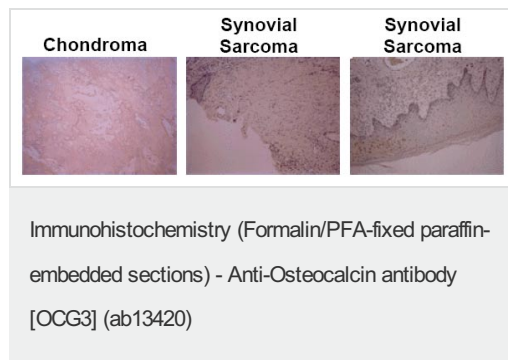
機能 Constitutes 1-2% of the total bone protein. It binds strongly to apatite and calcium.

配列類似性 Belongs to the osteocalcin/matrix Gla protein family.
Contains 1 Gla (gamma-carboxy-glutamate) domain.

翻訳後修飾 Gamma-carboxyglutamate residues are formed by vitamin K dependent carboxylation. These residues are essential for the binding of calcium.

細胞内局在 Secreted.

画像



Detection of human osteocalcin by ab13420

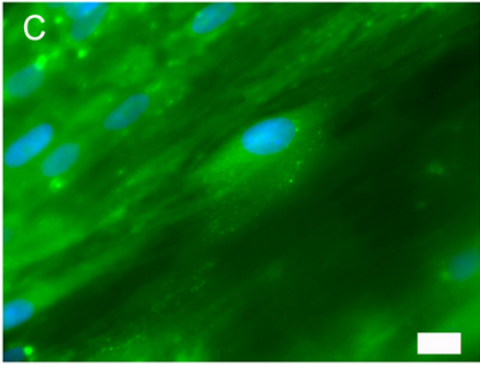


Image from Strauß S et al., PloS One. 2012;7(12):14. Fig 8.; doi: 10.1371/journal.pone.0051264

Immunocytochemistry/ Immunofluorescence - Anti-Osteocalcin antibody [OCG3] (ab13420)

Please note: All products are "FOR RESEARCH USE ONLY AND ARE NOT INTENDED FOR DIAGNOSTIC OR THERAPEUTIC USE"

Our Abpromise to you: Quality guaranteed and expert technical support

- Replacement or refund for products not performing as stated on the datasheet
- Valid for 12 months from date of delivery
- Response to your inquiry within 24 hours
- We provide support in Chinese, English, French, German, Japanese and Spanish
- Extensive multi-media technical resources to help you
- We investigate all quality concerns to ensure our products perform to the highest standards

If the product does not perform as described on this datasheet, we will offer a refund or replacement. For full details of the Abpromise, please visit <https://www.abcam.co.jp/abpromise> or contact our technical team.

Terms and conditions

- Guarantee only valid for products bought direct from Abcam or one of our authorized distributors