

Product datasheet

Anti-Nuclear Pore Complex Proteins antibody [Mab414] - ChIP Grade ab24609

★★★★☆ 9 Abreviews 63 References 画像数 4

製品の概要

製品名	Anti-Nuclear Pore Complex Proteins antibody [Mab414] - ChIP Grade
製品の詳細	Mouse monoclonal [Mab414] to Nuclear Pore Complex Proteins - ChIP Grade
由来種	Mouse
特異性	<p>ab24609 reacts with Nuclear Pore Complex (NPC) Proteins. Aris et al (J. Cell Biol. 108:2059-2067, 1989) report "In rat liver, this monoclonal antibody, mAb 414, binds to nuclear pore complex proteins, including one of molecular weight 62,000 (Davis, L. I., and G. Blobel. 1987. Proc. Natl. Acad. Sci. USA. 84:7552-7556). In yeast, mAb 414 cross reacts by immunoblotting with two proteins that have apparent molecular weights of 110,000 and 95,000, and are termed p110 and p95, respectively. Examination of subcellular fractions by immunoblotting shows that both p110 and p95 are located exclusively in the nuclear fraction. The mAb 414 immunoprecipitates several proteins from a crude yeast cell extract, including p110, p95, and a approximately 55-kD protein. Immunoprecipitation from subcellular fractions yields only p110 and p95 from purified nuclei, whereas the approximately 55-kD protein is immunoprecipitated from the soluble fraction. Digestion of purified nuclei with DNase to produce nuclear envelopes releases some of p110, but the majority of p110 is solubilized only after treatment of envelopes with 1 M NaCl. Immunofluorescence localization using yeast cells and isolated nuclei shows a punctate and patchy staining pattern of the nucleus."</p>
アプリケーション	適用あり: ChIP, WB, ICC/IF, IP, Electron Microscopy, IHC-Fr
種交差性	<p>交差種: Mouse, Rat, Cat, Human, Saccharomyces cerevisiae, Xenopus laevis, Caenorhabditis elegans, Drosophila melanogaster, Zebrafish</p> <p>交差が予測される動物種: Vertebrata </p>
免疫原	Nuclear pore complex mixture.
エピトープ	ab24609 recognizes the conserved domain FXFG repeats in nucleoporins like the p62, p152, p90.
ポジティブ・コントロール	Raw, HEK 293 cell lysate (see Abreview), rat liver lysate (see Aris reference)
特記事項	<p>This is a reliable general purpose monoclonal antibody which recognizes a related family of NPC proteins. This antibody is ideal for studying the morphology and composition of the nucleus and nuclear envelope. It is also useful in studying changes in the nuclear structure during mitosis and meiosis.</p>

医薬用外毒物

製品の特性

製品の状態	Liquid
保存方法	Shipped at 4°C. Store at +4°C short term (1-2 weeks). Upon delivery aliquot. Store at -20°C or -80°C. Avoid freeze / thaw cycle.
バッファー	Preservative: 0.03% Thimerosal (merthiolate) Constituent: PBS
精製度	Immunogen affinity purified
一次抗体 備考	This is a reliable general purpose monoclonal antibody which recognizes a related family of NPC proteins. This antibody is ideal for studying the morphology and composition of the nucleus and nuclear envelope. It is also useful in studying changes in the nuclear structure during mitosis and meiosis.
ポリ/モノ	モノクローナル
クローン名	Mab414
アイソタイプ	IgG1

アプリケーション

Our [Abpromise guarantee](#) covers the use of **ab24609** in the following tested applications.

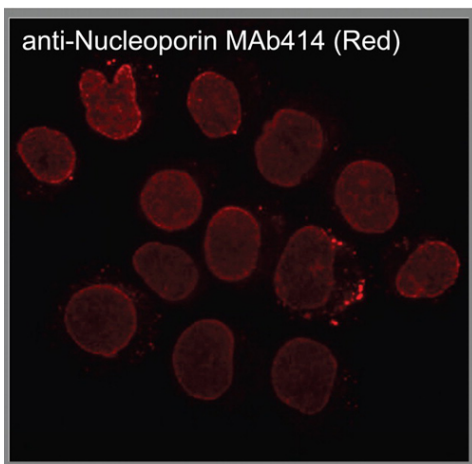
The application notes include recommended starting dilutions; optimal dilutions/concentrations should be determined by the end user.

アプリケーション	Abreviews	特記事項
ChIP		Use at an assay dependent concentration. PubMed: 20419146
WB	★★★★★	1/5000. Predicted molecular weight: 62 kDa. Suitable also in non reduced western blotting conditions (see Abreview). Nuclear extraction may be necessary (protocol detailed in Aris et al, http://www.jcb.org/cgi/reprint/108/6/2059).
ICC/IF	★★★★☆	1/5000. Fix cells with 4% paraformaldehyde in NWB (200 mM sucrose, 15 mM Hepes, pH 7.4, 50 mM NaCl, 2.5 mM MgCl ₂ , and 1 mM DTT). Permeabilise with 0.1% NP-40 or 0.1% Triton X-100 in PBS for 2 min. (see Lopez-Soler reference); different customer have used this antibody at different dilutions for ICC/IF (see images below). We recommend that optimal working dilutions are determined by each customer.
IP		1/5000. Nuclear extraction may be necessary (protocol detailed in Aris et al, http://www.jcb.org/cgi/reprint/108/6/2059).
Electron Microscopy		1/5000.
IHC-Fr		Use at an assay dependent concentration. 4% paraformaldehyde fixed tissue cut on a cryostat (see Kimura reference).

ターゲット情報

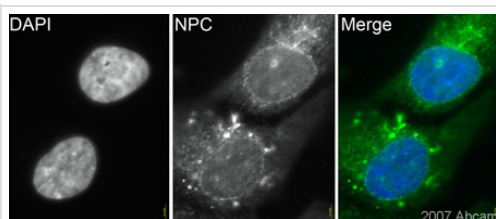
機能	Essential component of nuclear pore complex. Required for the assembly of peripheral proteins into the nuclear pore complex.
配列類似性	Belongs to the nucleoporin Nup84/Nup107 family.
翻訳後修飾	Phosphorylated upon DNA damage, probably by ATM or ATR.
細胞内局在	Nucleus > nuclear pore complex. Chromosome > centromere > kinetochore. Located on both the cytoplasmic and nuclear sides of the nuclear pore. During mitosis, localizes to the kinetochores.

画像



ab24609 staining nuclear pore complex proteins in Human chronic myelogenous leukemia cells from bone marrow cells. Cells were fixed with 4% paraformaldehyde in DPBS buffer for 20 mins and permeabilised with 0.1% Triton X-100 for 20 min at room temperature. Cells were blocked with 2% normal goat serum in DPBS with 1% BSA and washed with 0.1% Tween 20.

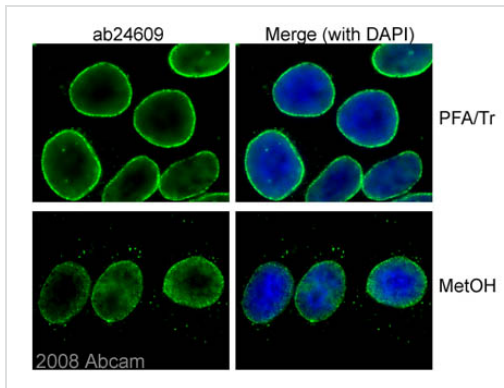
Immunocytochemistry/ Immunofluorescence - Anti-Nuclear Pore Complex Proteins antibody [Mab414] - ChIP Grade (ab24609)



ab24609 (1/200) staining nuclear pore complex proteins in human RPE-1 cells (green). Cells were fixed in paraformaldehyde, permeabilised with Triton X100 and counterstained with DAPI in order to highlight the nucleus (blue). Please refer to abreview for further experimental details.

Immunocytochemistry/ Immunofluorescence - Anti-Nuclear Pore Complex Proteins antibody [Mab414] - ChIP Grade (ab24609)

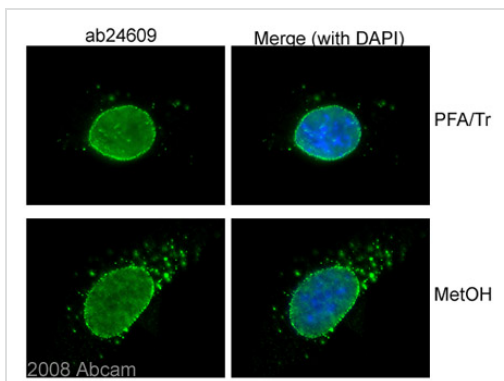
This image is courtesy of an Abreview submitted by Dr Kirk McManus



ab24609 (1/500) staining nuclear pore complex proteins in human HeLa Cells (green). Cells were fixed with Paraformaldehyde/Triton X-100 (10 min in PTEMF buffer (20mM PIPES, 1mM MgCl₂, 10mM EGTA, 4% PFA) /0.2% Triton-X100 at room T°C) or Methanol (6 min in Methanol -20 °C , followed by 3 washes in 1x PBS) and counterstained with Dapi in order to highlight the nucleus (blue).

Immunocytochemistry/ Immunofluorescence - Anti-Nuclear Pore Complex Proteins antibody [Mab414] - ChIP Grade (ab24609)

Image and protocol kindly provided by Rosamaria Mangiacasale, Marilena Ciciarello and Patrizia Lavia, Univ Rome



ab24609 (1/500) staining nuclear pore complex proteins in murine NIH/3T3 Cells (green). Cells were fixed with Paraformaldehyde/Triton X-100 (10 min in PTEMF buffer (20mM PIPES, 1mM MgCl₂, 10mM EGTA, 4% PFA) /0.2% Triton-X100 at room T°C) or Methanol (6 min in Methanol -20 °C , followed by 3 washes in 1x PBS) and counterstained with Dapi in order to highlight the nucleus (blue).

Immunocytochemistry/ Immunofluorescence - Anti-Nuclear Pore Complex Proteins antibody [Mab414] - ChIP Grade (ab24609)

Image and protocol kindly provided by Rosamaria Mangiacasale, Marilena Ciciarello and Patrizia Lavia, Univ Rome

Please note: All products are "FOR RESEARCH USE ONLY AND ARE NOT INTENDED FOR DIAGNOSTIC OR THERAPEUTIC USE"

Our Abpromise to you: Quality guaranteed and expert technical support

- Replacement or refund for products not performing as stated on the datasheet
- Valid for 12 months from date of delivery
- Response to your inquiry within 24 hours
- We provide support in Chinese, English, French, German, Japanese and Spanish
- Extensive multi-media technical resources to help you
- We investigate all quality concerns to ensure our products perform to the highest standards

If the product does not perform as described on this datasheet, we will offer a refund or replacement. For full details of the Abpromise, please visit <https://www.abcam.com.jp/abpromise> or contact our technical team.

Terms and conditions

- Guarantee only valid for products bought direct from Abcam or one of our authorized distributors