

## Product datasheet

# Anti-Nuclear Pore Complex Proteins antibody [39C7] ab60080

1 References [画像数 1](#)

### 製品の概要

製品名	Anti-Nuclear Pore Complex Proteins antibody [39C7]
製品の詳細	Mouse monoclonal [39C7] to Nuclear Pore Complex Proteins
由来種	Mouse
アプリケーション	<b>適用あり:</b> Flow Cyt, ICC/IF
種交差性	<b>交差種:</b> Mouse, Rat, Human, Saccharomyces cerevisiae
免疫原	Yeast nuclear preparation

### 製品の特性

製品の状態	Liquid
保存方法	Shipped at 4°C. Upon delivery aliquot and store at -20°C. Avoid freeze / thaw cycles.
バッファー	Preservative: 0.1% Sodium azide
精製度	Protein G purified
ポリモノ	モノクローナル
クローン名	39C7
アイソタイプ	IgG1

### アプリケーション

Our [Abpromise guarantee](#) covers the use of **ab60080** in the following tested applications.

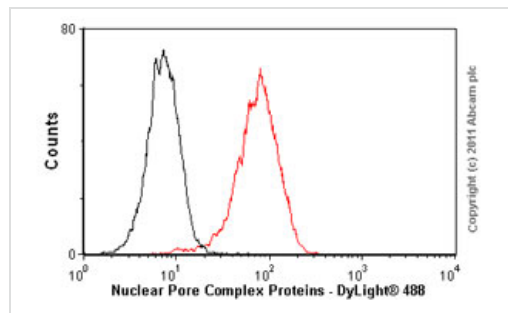
The application notes include recommended starting dilutions; optimal dilutions/concentrations should be determined by the end user.

アプリケーション	Abreviews	特記事項
Flow Cyt		Use 1-2µg for 10 <sup>6</sup> cells. <a href="#">ab170190</a> - Mouse monoclonal IgG1, is suitable for use as an isotype control with this antibody.
ICC/IF		1/100 - 1/500. 1/100 - 1/500 (yeast cells) and 1/50 - 1/100 (mammalian cells)

## ターゲット情報

機能	Essential component of nuclear pore complex. Required for the assembly of peripheral proteins into the nuclear pore complex.
配列類似性	Belongs to the nucleoporin Nup84/Nup107 family.
翻訳後修飾	Phosphorylated upon DNA damage, probably by ATM or ATR.
細胞内局在	Nucleus > nuclear pore complex. Chromosome > centromere > kinetochore. Located on both the cytoplasmic and nuclear sides of the nuclear pore. During mitosis, localizes to the kinetochores.

## 画像



Flow Cytometry - Anti-Nuclear Pore Complex Proteins antibody [39C7] (ab60080)

Overlay histogram showing HeLa cells stained with ab60080 (red line). The cells were fixed with 80% methanol (5 min) and then permeabilized with 0.1% PBS-Tween for 20 min. The cells were then incubated in 1x PBS / 10% normal goat serum / 0.3M glycine to block non-specific protein-protein interactions followed by the antibody (ab60080, 1µg/1x10<sup>6</sup> cells) for 30 min at 22°C. The secondary antibody used was DyLight® 488 goat anti-mouse IgG (H+L) (ab96879) at 1/500 dilution for 30 min at 22°C. Isotype control antibody (black line) was mouse IgG1 [ICIGG1] (ab91353, 2µg/1x10<sup>6</sup> cells) used under the same conditions. Acquisition of >5,000 events was performed. This antibody gave a positive signal in HeLa cells fixed with 4% paraformaldehyde (10 min)/permeabilized with 0.1% PBS-Tween for 20 min used under the same conditions.

**Please note:** All products are "FOR RESEARCH USE ONLY AND ARE NOT INTENDED FOR DIAGNOSTIC OR THERAPEUTIC USE"

## Our Abpromise to you: Quality guaranteed and expert technical support

- Replacement or refund for products not performing as stated on the datasheet
- Valid for 12 months from date of delivery
- Response to your inquiry within 24 hours
- We provide support in Chinese, English, French, German, Japanese and Spanish
- Extensive multi-media technical resources to help you
- We investigate all quality concerns to ensure our products perform to the highest standards

If the product does not perform as described on this datasheet, we will offer a refund or replacement. For full details of the Abpromise, please visit <https://www.abcam.co.jp/abpromise> or contact our technical team.

## Terms and conditions

---

- Guarantee only valid for products bought direct from Abcam or one of our authorized distributors