

Product datasheet

Anti-Nrf2 antibody ab71890

★★★★☆ 1 Abreviews 1 References 画像数 2

製品の概要

製品名	Anti-Nrf2 antibody
製品の詳細	Rabbit polyclonal to Nrf2
由来種	Rabbit
アプリケーション	適用あり: IHC-P, WB, ICC/IF
種交差性	交差種: Human 交差が予測される動物種: Cow, Chimpanzee, Rhesus monkey, Gorilla, Orangutan
免疫原	Synthetic peptide conjugated to KLH derived from within residues 100 - 200 of Human Nrf2. Immunogen の所有権に関して (Peptide available as ab71889 .)
ポジティブ・コントロール	This antibody gave a positive signal in the following Human Whole Cell Lysates: TE 671, Ramos, A498, Jurkat - Staurosporine Treated (24hr, 500nM), SK N SH

製品の特性

製品の状態	Liquid
保存方法	Shipped at 4°C. Store at +4°C short term (1-2 weeks). Upon delivery aliquot. Store at -20°C or -80°C. Avoid freeze / thaw cycle.
バッファー	Preservative: 0.02% Sodium Azide Constituents: 1% BSA, PBS, pH 7.4
精製度	Immunogen affinity purified
ポリ/モノ	ポリクローナル
アイソタイプ	IgG

アプリケーション

Our [Abpromise guarantee](#) covers the use of **ab71890** in the following tested applications.

The application notes include recommended starting dilutions; optimal dilutions/concentrations should be determined by the end user.

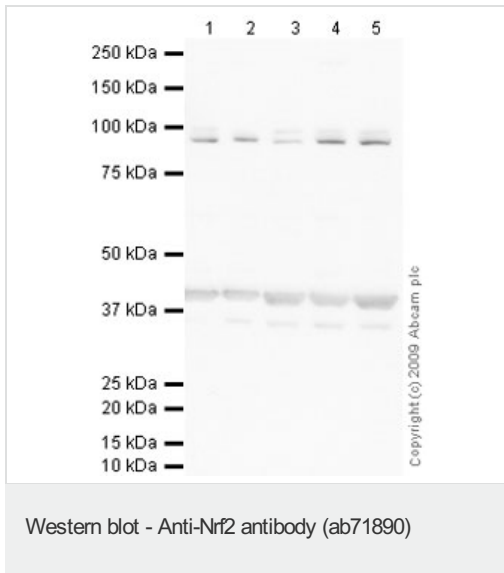
アプリケーション	Abreviews	特記事項
IHC-P	★★★★☆	Use at an assay dependent concentration.

アプリケーション	Abreviews	特記事項
WB		Use a concentration of 1 µg/ml. Detects a band of approximately 90 kDa (predicted molecular weight: 68 kDa). Can be blocked with Human Nrf2 peptide (ab71889) .
ICC/IF		Use a concentration of 5 µg/ml.

ターゲット情報

機能	Transcription activator that binds to antioxidant response (ARE) elements in the promoter regions of target genes. Important for the coordinated up-regulation of genes in response to oxidative stress. May be involved in the transcriptional activation of genes of the beta-globin cluster by mediating enhancer activity of hypersensitive site 2 of the beta-globin locus control region.
組織特異性	Widely expressed. Highest expression in adult muscle, kidney, lung, liver and in fetal muscle.
配列類似性	Belongs to the bZIP family. CNC subfamily. Contains 1 bZIP domain.
ドメイン	Acidic activation domain in the N-terminus, and DNA binding domain in the C-terminus.
翻訳後修飾	Phosphorylation of Ser-40 by PKC in response to oxidative stress dissociates NFE2L2 from its cytoplasmic inhibitor KEAP1, promoting its translocation into the nucleus.
細胞内局在	Cytoplasm > cytosol. Nucleus. Cytosolic under unstressed conditions, translocates into the nucleus upon induction by electrophilic agents.

画像



All lanes : Anti-Nrf2 antibody (ab71890) at 1 μ g/ml

Lane 1 : TE 671 (Human Rhabdomyosarcoma) Whole Cell Lysate

Lane 2 : Ramos (Human Burkitt's lymphoma cell line) Whole Cell Lysate

Lane 3 : A498 (Human Kidney Carcinoma) Whole Cell Lysate

Lane 4 : Jurkat Whole Cell Lysate - Staurosporine Treated (24hr, 500nM)

Lane 5 : SK N SH (Human neuroblastoma) Whole Cell Lysate

Lysates/proteins at 10 μ g per lane.

Secondary

All lanes : Goat polyclonal to Rabbit IgG - H&L - Pre-Adsorbed (HRP) at 1/3000 dilution

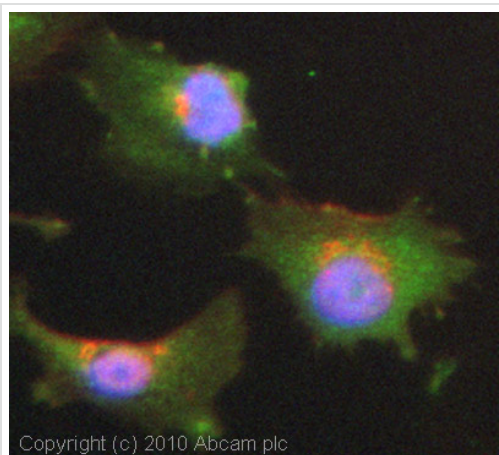
Performed under reducing conditions.

Predicted band size: 68 kDa

Observed band size: 90 kDa

Additional bands at: 40 kDa. We are unsure as to the identity of these extra bands.

The band observed at 90 kDa is consistent with the banding pattern observed for other commercially available antibodies to Nrf2 and is thought to correspond to the polyubiquinated form of Nrf2.



Immunocytochemistry/ Immunofluorescence - Anti-Nrf2 antibody (ab71890)

ICC/IF image of ab71890 stained HeLa cells. The cells were 4% PFA fixed (10 min) and then incubated in 1%BSA / 10% normal goat serum / 0.3M glycine in 0.1% PBS-Tween for 1h to permeabilise the cells and block non-specific protein-protein interactions. The cells were then incubated with the antibody (ab71890, 5µg/ml) overnight at +4°C. The secondary antibody (green) was Alexa Fluor® 488 goat anti-rabbit IgG (H+L) used at a 1/1000 dilution for 1h. Alexa Fluor® 594 WGA was used to label plasma membranes (red) at a 1/200 dilution for 1h. DAPI was used to stain the cell nuclei (blue) at a concentration of 1.43µM. This antibody also gave a positive result in 4% PFA fixed (10 min) MCF7 cells at 5µg/ml.

Please note: All products are "FOR RESEARCH USE ONLY AND ARE NOT INTENDED FOR DIAGNOSTIC OR THERAPEUTIC USE"

Our Abpromise to you: Quality guaranteed and expert technical support

- Replacement or refund for products not performing as stated on the datasheet
- Valid for 12 months from date of delivery
- Response to your inquiry within 24 hours
- We provide support in Chinese, English, French, German, Japanese and Spanish
- Extensive multi-media technical resources to help you
- We investigate all quality concerns to ensure our products perform to the highest standards

If the product does not perform as described on this datasheet, we will offer a refund or replacement. For full details of the Abpromise, please visit <https://www.abcam.co.jp/abpromise> or contact our technical team.

Terms and conditions

- Guarantee only valid for products bought direct from Abcam or one of our authorized distributors