

Product datasheet

Natural Human LRG1 protein ab115506

画像数 1

製品の概要

製品名	Natural Human LRG1 protein
タンパク質長	Full length protein

製品の詳細

由来	Native
由来	Native
アミノ酸配列	
アクセッション番号	P02750
生物種	Human
分子量	34 kDa
領域	36 to 347

特性

Our [Abpromise guarantee](#) covers the use of **ab115506** in the following tested applications.

The application notes include recommended starting dilutions; optimal dilutions/concentrations should be determined by the end user.

アプリケーション	Western blot ELISA Functional Studies
エンドキシン・レベル	< 1.000 Eu/μg
製品の状態	Lyophilised
備考	All blood samples used for protein preparation were tested and found negative for HBsAg, anti-HCV, HIV Ag/Ab, and syphilis. Identification of LRG from human serum by LC-MS/MS – The band of related protein was excised from the polyacrylamide gel and in-gel digested by trypsin (20ng/μL) for 2 hours in 40°C. Tryptic peptides were analysed by LC-MS/MS. The MASCOT score for LRG was 569 with 28% sequence coverage. MS/MS analysis of seven peptides yielded significant individual ions scores (for scores >50, p<0.05)

前処理および保存

保存方法および安定性

Shipped at 4°C. Store at -20°C.

pH: 7.50

Constituents: 0.12% Sodium chloride, 0.24% Tris

再構成

Add deionized water to prepare a working stock solution of approximately 0.5 mg/mL and let the lyophilized pellet dissolve completely. Aliquot reconstituted protein to avoid repeated freezing/thawing cycles and store at -80°C for long term storage. Reconstituted protein can be stored at 4°C for a limited period of time; it does not show any change after one week at 4°C.

関連情報

組織特異性

Plasma.

配列類似性

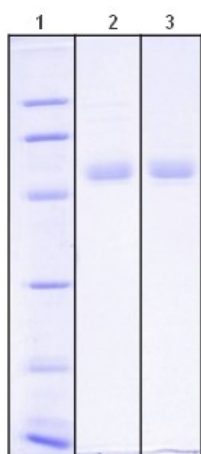
Contains 8 LRR (leucine-rich) repeats.

Contains 1 LRRCT domain.

細胞内局在

Secreted.

画像



SDS-PAGE analysis of Human LRG1: 12%

gel stained with Coomassie Brilliant Blue R250

Lane 1. M.W. marker – 14, 21, 31, 45, 66, 97

kDa

Lane 2. reduced and heated sample, 5µg/lane

Lane 3. non-reduced and non-heated sample,

5µg/lane

SDS-PAGE - LRG1 protein (ab115506)

Please note: All products are "FOR RESEARCH USE ONLY AND ARE NOT INTENDED FOR DIAGNOSTIC OR THERAPEUTIC USE"

Our Abpromise to you: Quality guaranteed and expert technical support

- Replacement or refund for products not performing as stated on the datasheet
- Valid for 12 months from date of delivery
- Response to your inquiry within 24 hours
- We provide support in Chinese, English, French, German, Japanese and Spanish
- Extensive multi-media technical resources to help you
- We investigate all quality concerns to ensure our products perform to the highest standards

If the product does not perform as described on this datasheet, we will offer a refund or replacement. For full details of the Abpromise, please visit <https://www.abcam.co.jp/abpromise> or contact our technical team.

Terms and conditions

- Guarantee only valid for products bought direct from Abcam or one of our authorized distributors