

## Product datasheet

# Anti-NRG1 antibody [7D5] ab2369

### 画像数 1

#### 製品の概要

製品名	Anti-NRG1 antibody [7D5]
製品の詳細	Mouse monoclonal [7D5] to NRG1
由来種	Mouse
アプリケーション	<b>適用あり:</b> IHC-P, IHC-Fr
種交差性	<b>交差種:</b> Mouse, Rat
免疫原	Recombinant extracellular domain of rat NRG1 (Neuregulin 1) protein.
ポジティブ・コントロール	Prostate carcinoma
特記事項	

NRG1 (Neuregulin 1) binds to e-erbB3 and c-erbB4 receptors on mammary and neuronal cells with low and high affinity, respectively. NRG1 exists in several isoforms, which are classified in two groups, a and b, that differ in their EGF-like domain and in receptor binding affinity. This antibody detects pan-NRG1 and is not subtype specific.

Abcam is committed to meeting high standards of ethical manufacturing and has decided to discontinue this product by June 2019 as it has been generated by the ascites method. We are sorry for any inconvenience this may cause.

#### 製品の特性

製品の状態	Liquid
保存方法	Shipped at 4°C. Store at +4°C short term (1-2 weeks). Store at -20°C or -80°C. Avoid freeze / thaw cycle.
バッファー	Preservative: 0.05% Sodium Azide Constituents: 1% BSA
精製度	IgG fraction
一次抗体 備考	NRG1 (Neuregulin 1) binds to e-erbB3 and c-erbB4 receptors on mammary and neuronal cells with low and high affinity, respectively. NRG1 exists in several isoforms, which are classified in two groups, a and b, that differ in their EGF-like domain and in receptor binding affinity. This antibody detects pan-NRG1 and is not subtype specific.
ポリ/モノ	モノクローナル
クローン名	7D5
ミエローマ	unknown

アイソタイプ	IgG2a
軽鎖の種類	unknown

## アプリケーション

Our [Abpromise guarantee](#) covers the use of **ab2369** in the following tested applications.

The application notes include recommended starting dilutions; optimal dilutions/concentrations should be determined by the end user.

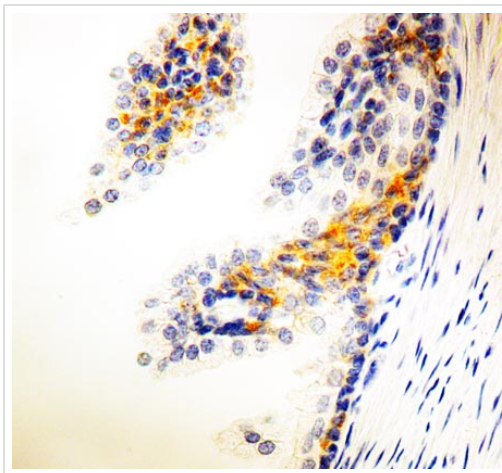
アプリケーション	Abreviews	特記事項
IHC-P		1/50 - 1/100. Perform heat mediated antigen retrieval before commencing with IHC staining protocol. ABC method.
IHC-Fr		1/50 - 1/100. ABC method.

## ターゲット情報

機能	Direct ligand for ERBB3 and ERBB4 tyrosine kinase receptors. Concomitantly recruits ERBB1 and ERBB2 coreceptors, resulting in ligand-stimulated tyrosine phosphorylation and activation of the ERBB receptors. The multiple isoforms perform diverse functions such as inducing growth and differentiation of epithelial, glial, neuronal, and skeletal muscle cells; inducing expression of acetylcholine receptor in synaptic vesicles during the formation of the neuromuscular junction; stimulating lobuloalveolar budding and milk production in the mammary gland and inducing differentiation of mammary tumor cells; stimulating Schwann cell proliferation; implication in the development of the myocardium such as trabeculation of the developing heart. Isoform 10 may play a role in motor and sensory neuron development.
組織特異性	Type I isoforms are the predominant forms expressed in the endocardium. Isoform alpha is expressed in breast, ovary, testis, prostate, heart, skeletal muscle, lung, placenta liver, kidney, salivary gland, small intestine and brain, but not in uterus, stomach, pancreas, and spleen. Isoform 3 is the predominant form in mesenchymal cells and in non-neuronal organs, whereas isoform 6 is the major neuronal form. Isoform 8 is expressed in spinal cord and brain. Isoform 9 is the major form in skeletal muscle cells; in the nervous system it is expressed in spinal cord and brain. Also detected in adult heart, placenta, lung, liver, kidney, and pancreas. Isoform 10 is expressed in nervous system: spinal cord motor neurons, dorsal root ganglion neurons, and brain. Predominant isoform expressed in sensory and motor neurons. Not detected in adult heart, placenta, lung, liver, skeletal muscle, kidney, and pancreas. Not expressed in fetal lung, liver and kidney. Type IV isoforms are brain-specific.
関連疾患	Note=A chromosomal aberration involving NRG1 produces gamma-heregulin. Translocation t(8;11) with ODZ4. The translocation fuses the 5'-end of ODZ4 to NRG1 (isoform 8). The product of this translocation was first thought to be an alternatively spliced isoform. Gamma-heregulin is a soluble activating ligand for the ERBB2-ERBB3 receptor complex and acts as an autocrine growth factor in a specific breast cancer cell line (MDA-MB-175). Not detected in breast carcinoma samples, including ductal, lobular, medullary, and mucinous histological types, neither in other breast cancer cell lines.
配列類似性	Belongs to the neuregulin family. Contains 1 EGF-like domain. Contains 1 Ig-like C2-type (immunoglobulin-like) domain.

<b>発生段階</b>	Detectable at early embryonic ages. Isoform 10 is highly expressed in developing spinal motor neurons and in developing cranial nerve nuclei. Expression is maintained only in both adult motor neurons and dorsal root ganglion neurons. Type IV isoforms are expressed in fetal brain.
<b>ドメイン</b>	The cytoplasmic domain may be involved in the regulation of trafficking and proteolytic processing. Regulation of the proteolytic processing involves initial intracellular domain dimerization. ERBB receptor binding is elicited entirely by the EGF-like domain.
<b>翻訳後修飾</b>	Proteolytic cleavage close to the plasma membrane on the external face leads to the release of the soluble growth factor form.
<b>細胞内局在</b>	N- and O-glycosylated. Extensive glycosylation precedes the proteolytic cleavage. Secreted; Cell membrane. Does not seem to be active; Membrane. May possess an internal uncleaved signal sequence; Nucleus. May be nuclear and Secreted. Has a signal peptide.

## 画像



Immunohistochemical analysis of formalin-fixed, paraffin-embedded Human prostate carcinoma tissue, staining NRG1 with ab2369.

Immunohistochemistry (Formalin/PFA-fixed paraffin-embedded sections) - Anti-NRG1 antibody [7D5] (ab2369)

**Please note:** All products are "FOR RESEARCH USE ONLY AND ARE NOT INTENDED FOR DIAGNOSTIC OR THERAPEUTIC USE"

## Our Abpromise to you: Quality guaranteed and expert technical support

- Replacement or refund for products not performing as stated on the datasheet
- Valid for 12 months from date of delivery
- Response to your inquiry within 24 hours
- We provide support in Chinese, English, French, German, Japanese and Spanish
- Extensive multi-media technical resources to help you
- We investigate all quality concerns to ensure our products perform to the highest standards

If the product does not perform as described on this datasheet, we will offer a refund or replacement. For full details of the Abpromise, please visit <https://www.abcam.co.jp/abpromise> or contact our technical team.

## Terms and conditions

---

- Guarantee only valid for products bought direct from Abcam or one of our authorized distributors